

# Lyve1-IRES-Cre

系統名	C57BL/6Smoc- <i>Lyve1</i> <sup>em(IRES-Cre)Smoc</sup>
SMOC番号	NM-KI-220107
維持形態	Repository Live

## 遺伝子の概要

Gene Symbol Lyve1	Synonyms	Xlkd1; Lyve-1; Crsbp-1; 1200012G08Rik
	NCBI ID	<a href="#">114332</a>
	MGI ID	<a href="#">2136348</a>
	Ensembl ID	<a href="#">ENSMUSG00000030787</a>
	Human Ortholog	LYVE1

## 説明

IRES-Cre expression cassette was knocked into the Lyve1 gene stop codon site.

**応用分野:** Cre mouse

\*Literature published using this strain should indicate: Lyve1-IRES-Cre mice (Cat. NO. NM-KI-220107) were purchased from Shanghai Model Organisms Center, Inc..

## 表現型データ

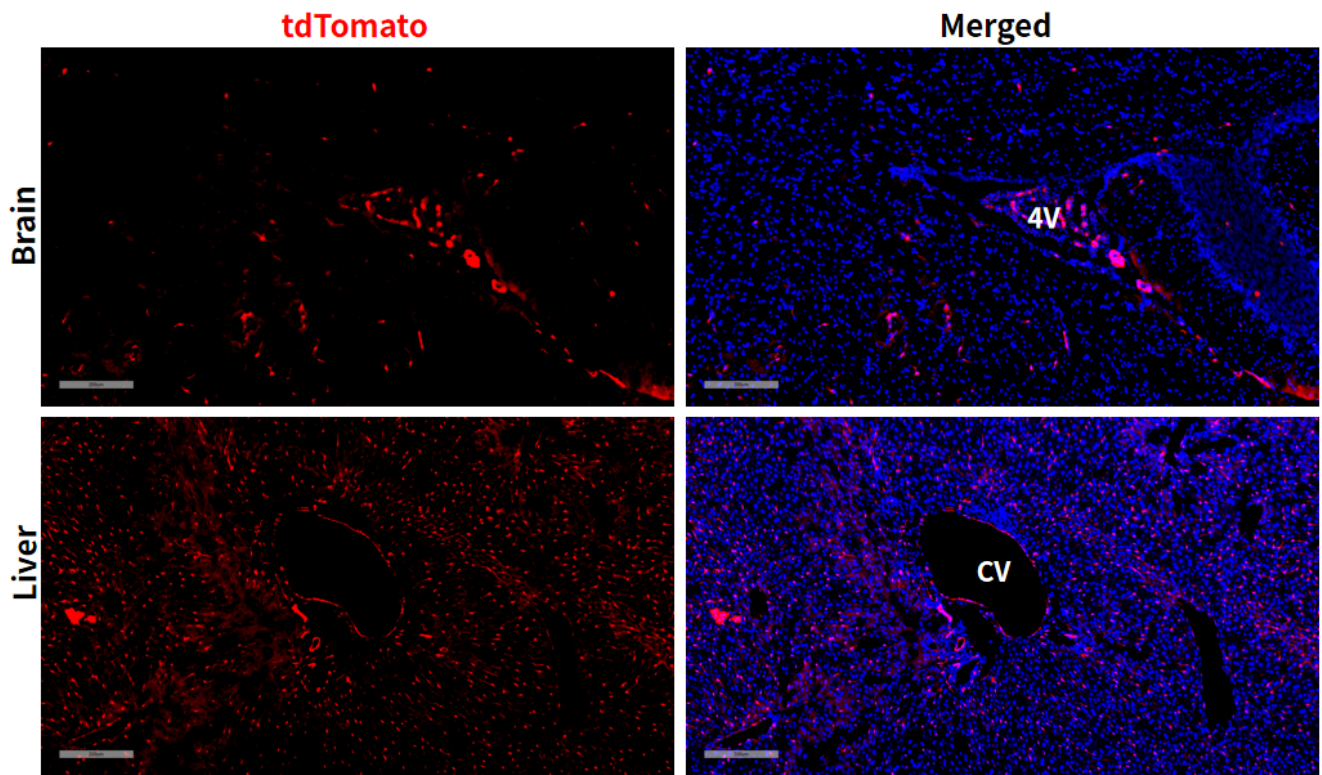


Fig1. Cre mediated recombination in brain and liver of Lyve1<sup>Cre/+</sup>;Rosa26<sup>tdTomato/+</sup> mouse.

4V:Fourth ventricle; CV:Central vein;

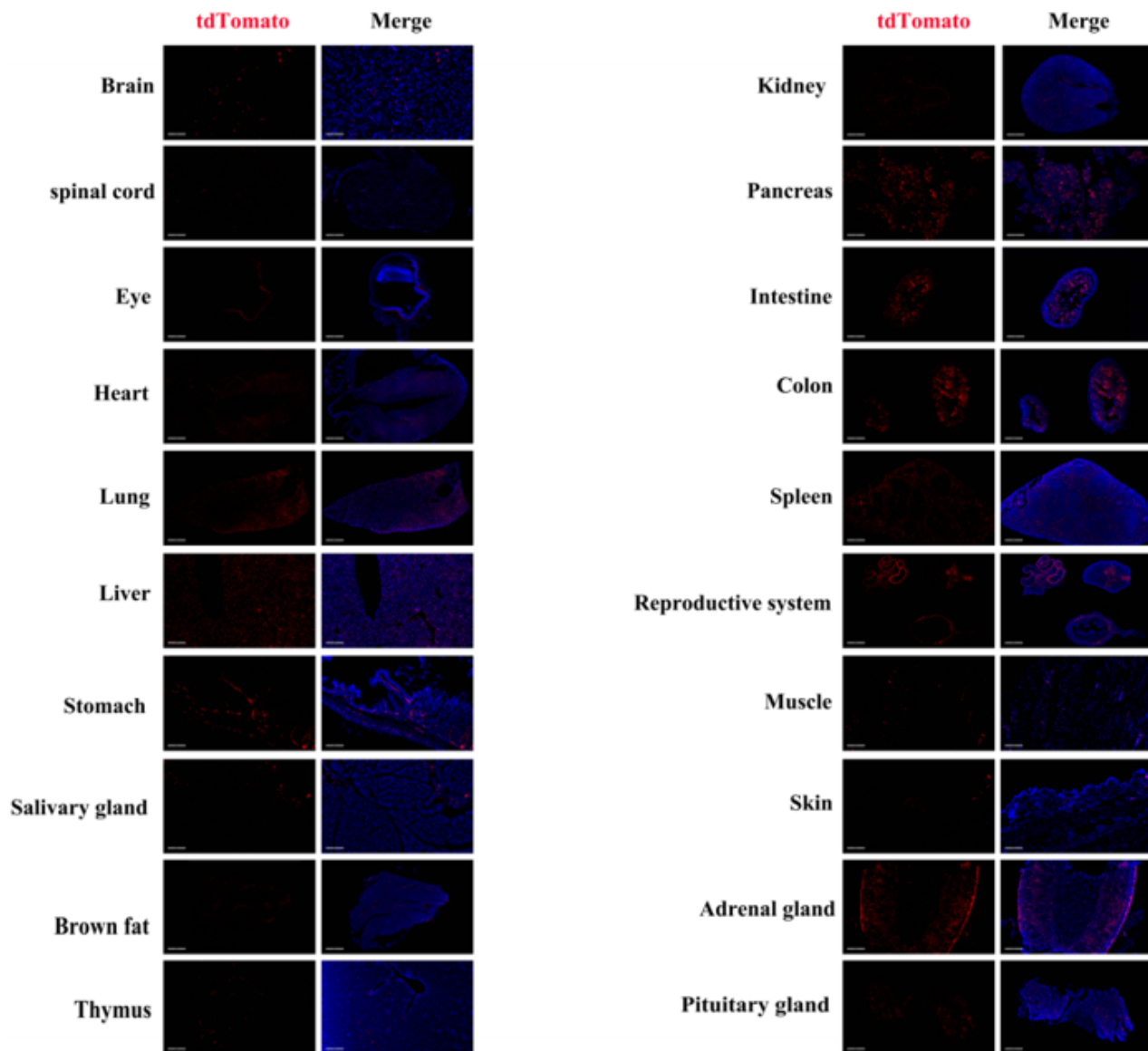


Fig2. Detection of tdTomato(red) in various tissues of *Lyve1<sup>Cre/+</sup>;Rosa26<sup>tdTomato/+</sup>* mouse. Expression tissues include: brain, spinal cord, retina, heart, lungs, liver, stomach, salivary glands, brown fat, thymus, kidneys, pancreas, small intestine, colon, spleen, ovaries, muscles, skin, adrenal glands, pituitary gland. (6-weeks old, female) (For more detailed information please contact our technical advisor.)