

# Foxp1-2A-Cre

系統名	C57BL/6Smoc- <i>Foxp1</i> <sup>em(2A-Cre)Smoc</sup>
SMOC番号	NM-KI-220118
維持形態	Sperm cryopreservation

## 遺伝子の概要

Gene Symbol Foxp1	Synonyms	AI461938; AW494214; 3110052D19Rik; 4932443N09Rik
	NCBI ID	<a href="#">108655</a>
	MGI ID	<a href="#">1914004</a>
	Ensembl ID	<a href="#">ENSMUSG00000030067</a>
	Human Ortholog	FOXP1

## 説明

2A-Cre expression cassette was knocked into the Foxp1 gene stop codon site.

応用分野: Cre mouse

\*Literature published using this strain should indicate: Foxp1-2A-Cre mice (Cat. NO. NM-KI-220118) were purchased from Shanghai Model Organisms Center, Inc..

## 表現型データ

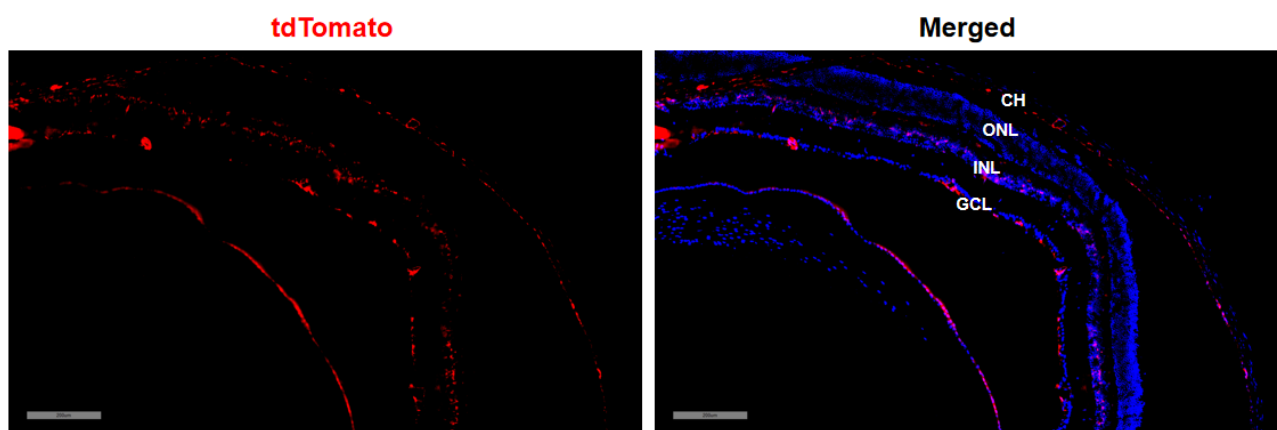


Fig1. Cre mediated recombination in retina of Foxp1<sup>Cre/+</sup>;Rosa26<sup>tdTomato/+</sup> mouse.

(GCL, ganglion cell layer; INL, inner nuclear layer; ONL, outer nuclear layer; RPE, retinal pigment epithelium; CH, choroid)

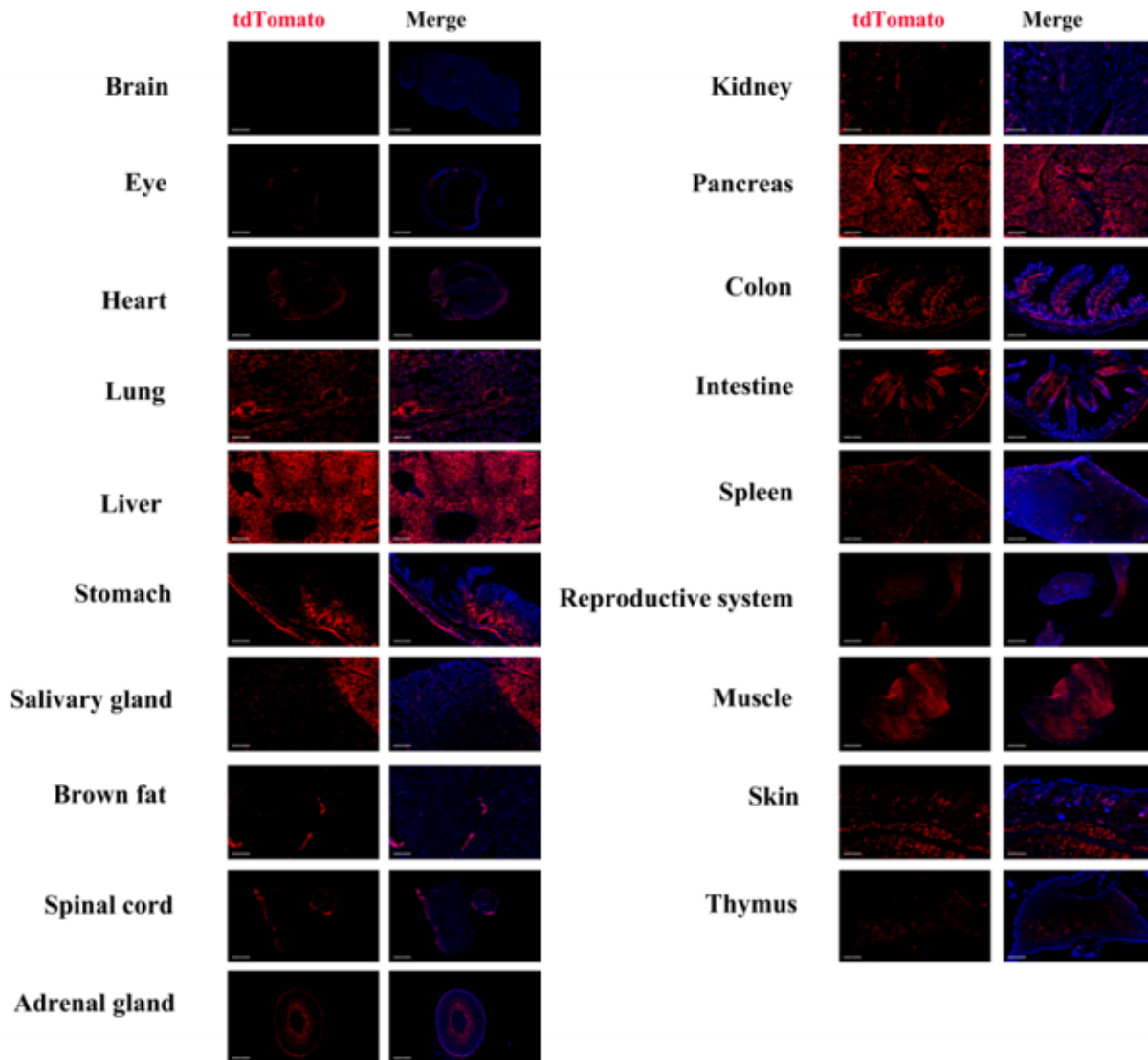


Fig2. Detection of tdTomato(red) in various tissues of *Foxp1<sup>cre/+</sup>;Rosa26<sup>tdTomato/+</sup>* mouse. Expression tissues include: retina, heart, lung, liver, stomach, salivary gland, spinal cord, adrenal gland, kidney, pancreas, colon, small intestine, spleen, testis and epididymis, muscle, skin and thymus. A few cells expressed in brain, brown fat. (61-day old, male) (For more detailed information please contact our technical advisor.)