

CT26-hPSMA (2)

Strain Information

SMOC番号 NM-S24A-TM41

Cell Line CT26-Tg(hPSMA)Smoc

維持形態 Validation of target gene expression completed

説明 PSMA gene humanized CT26 cell line

*Literature published using this strain should indicate: CT26-hPSMA (2) cell line (Cat. NO. NM-S24A-TM41) was purchased from Shanghai Model Organisms Center, Inc..

表現型データ

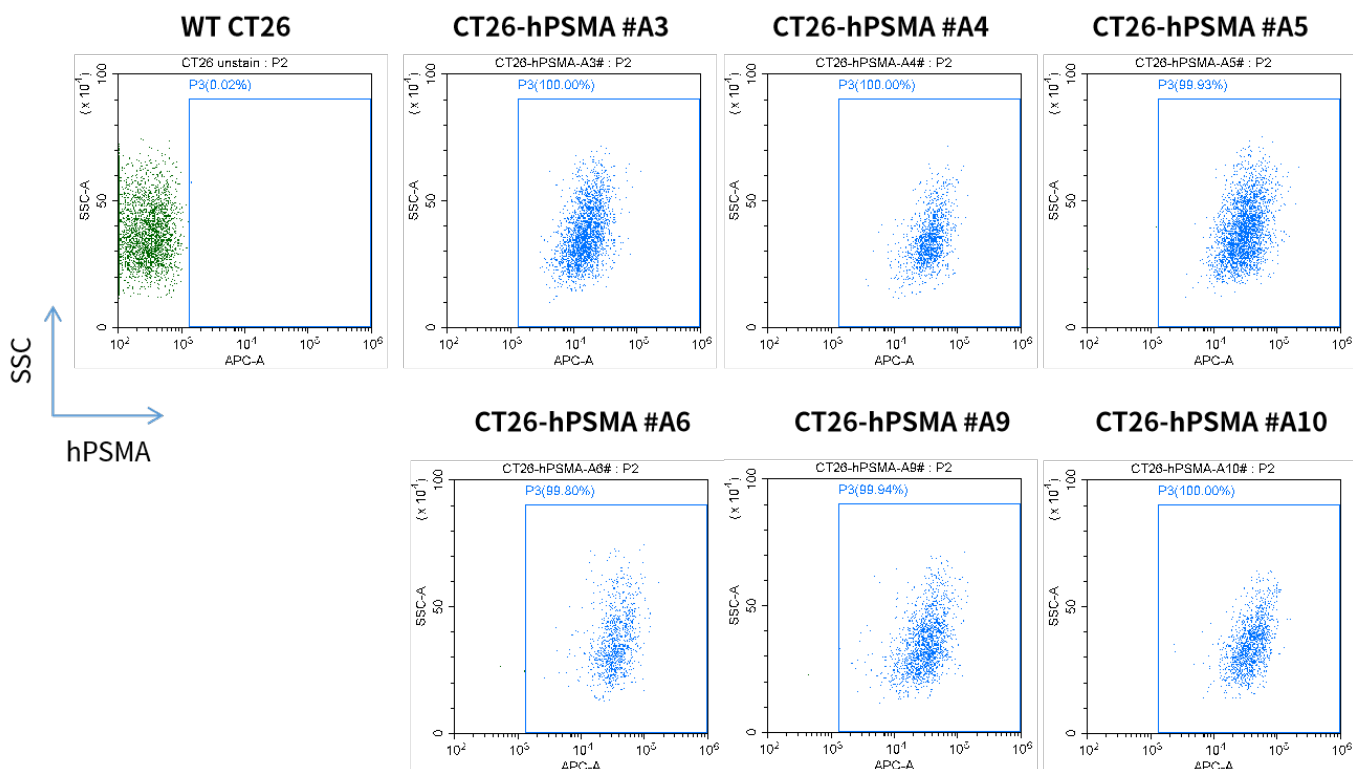


Fig1. hPSMA expression in vitro cultured cells of CT26-hPSMA