

Foxl2-IRES-CreERT2

系統名	C57BL/6Smoc- <i>Foxl2</i> ^{em(IRES-CreERT2)Smoc}
SMOC番号	NM-KI-220290
維持形態	Repository Live

遺伝子の概要

Gene Symbol Foxl2	Synonyms	BPES; Pfrk; PINTO; AU045128
	NCBI ID	26927
	MGI ID	1349428
	Ensembl ID	ENSMUSG00000050397
	Human Ortholog	FOXL2

説明

IRES-CreERT2 expression cassette was knocked into the Foxl2 gene stop codon site.
*Literature published using this strain should indicate: Foxl2-IRES-CreERT2 mice (Cat. NO. NM-KI-220290) were purchased from Shanghai Model Organisms Center, Inc..

表現型データ

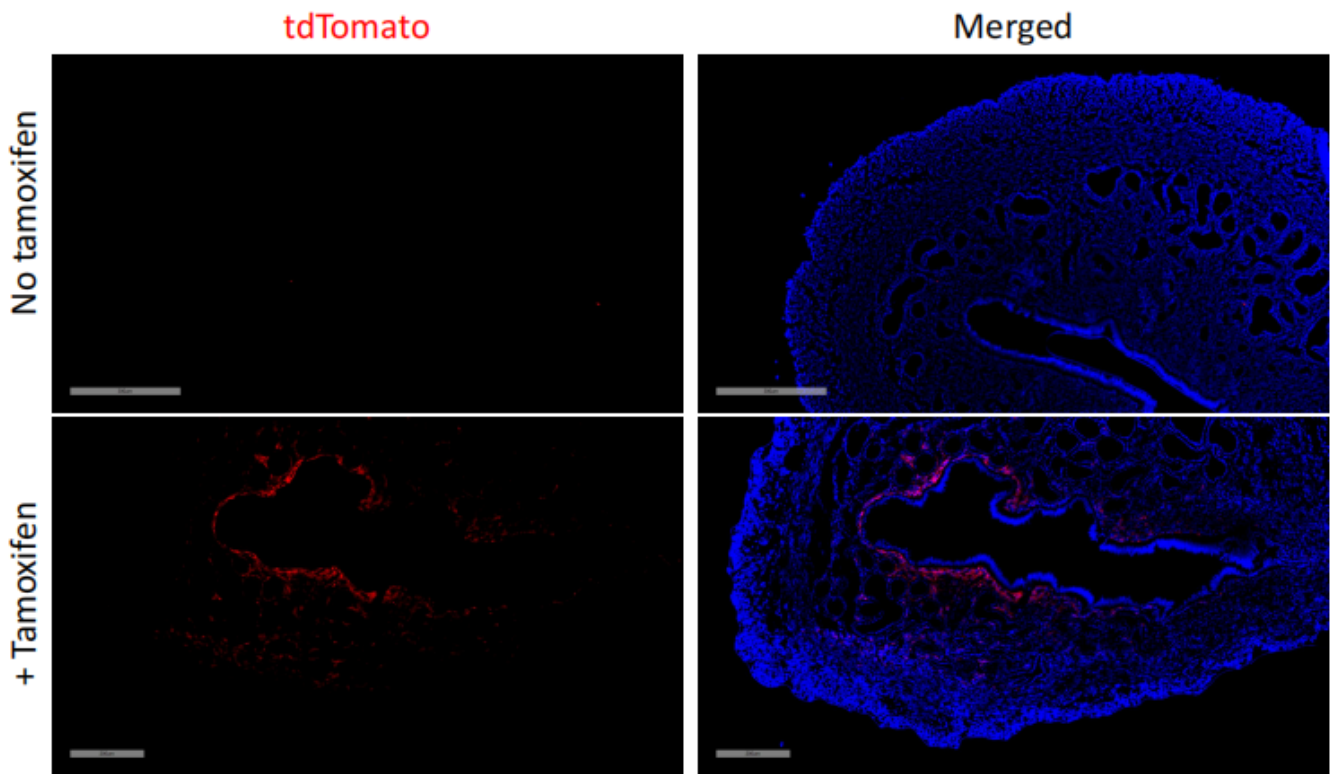


Fig1. CreERT2 mediated recombination in the uterus of Foxl2CreERT2/+; Rosa26tdTomato/+ mouse.

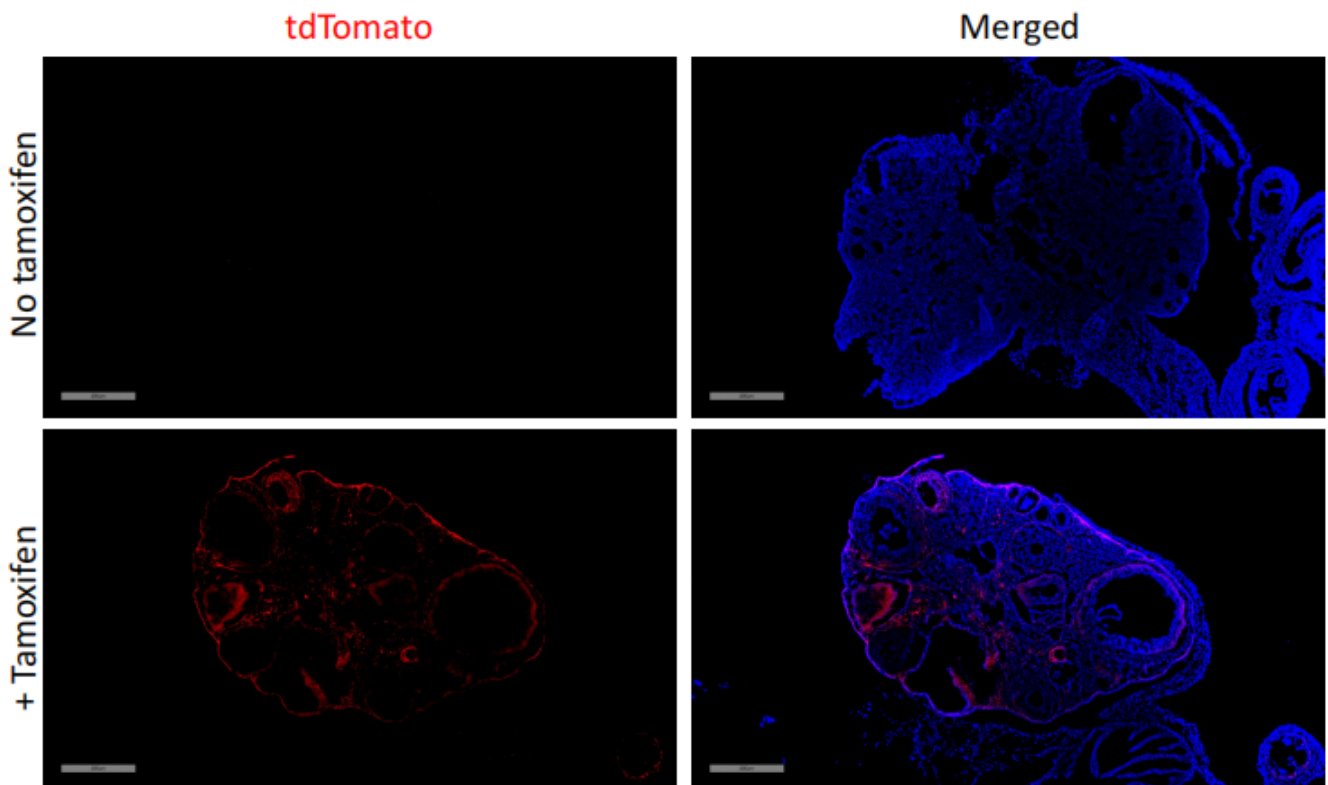


Fig2. CreERT2 mediated recombination in the ovary of Foxl2CreERT2/+; Rosa26tdTomato/+ mouse.

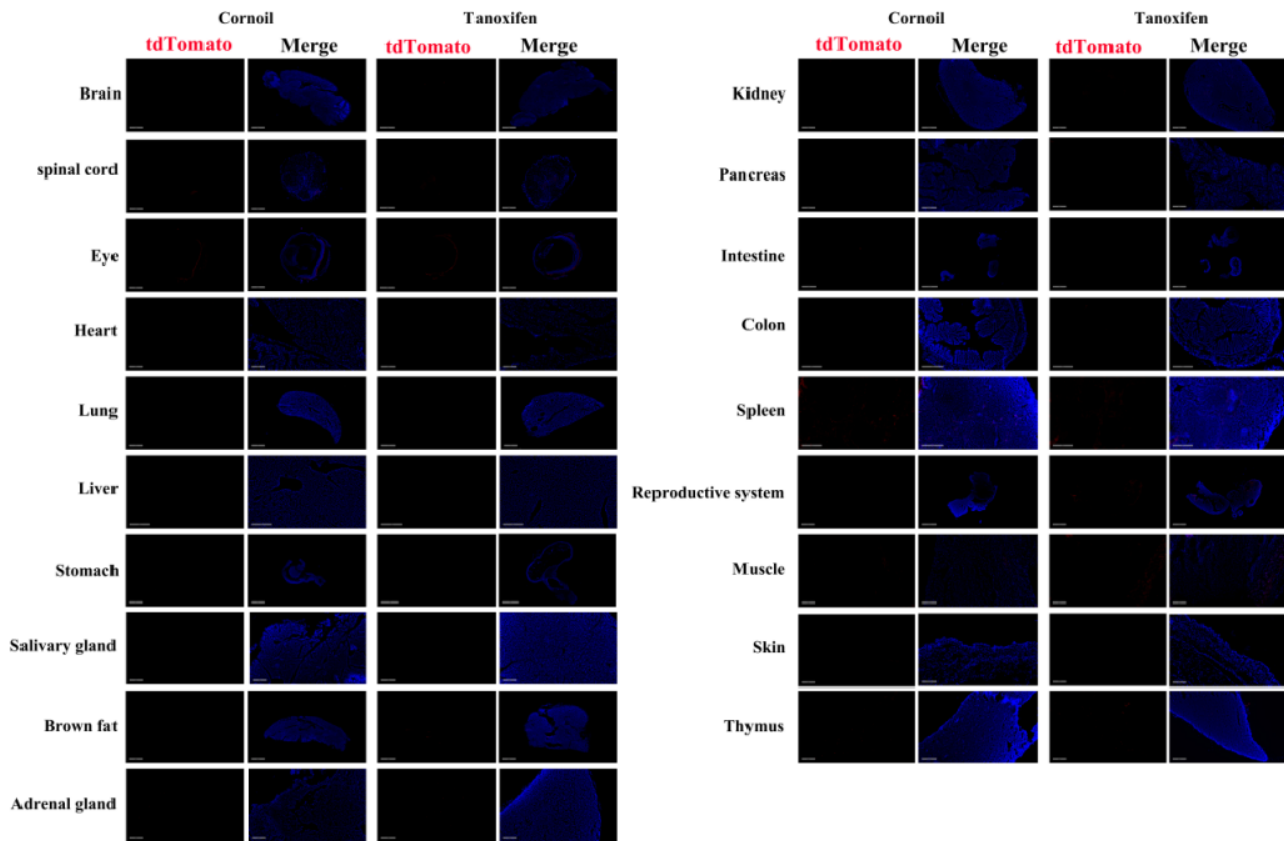


Fig3. Detection of tdTomato (red) in various tissues of *Foxl2^{CreERT2/+}; Rosa26^{tdTomato/+}* mice. (For more detailed information please contact our technical advisor.)