

hLRRC15

系統名	C57BL/6Smoc- <i>Lrrc15</i> ^{em(hLRRC15)Smoc}
SMOC番号	NM-HU-220411
維持形態	Repository Live

遺伝子の概要

Gene Symbol Lrrc15	Synonyms	LIB, 5430427N11Rik
	NCBI ID	74488
	MGI ID	1921738
	Ensembl ID	ENSMUSG00000052316
	Human Ortholog	LRRC15

説明

The endogenous mouse *Lrrc15* gene was replaced by human LRRC15 gene.

*Literature published using this strain should indicate: hLRRC15 mice (Cat. NO. NM-HU-220411) were purchased from Shanghai Model Organisms Center, Inc..

表現型データ

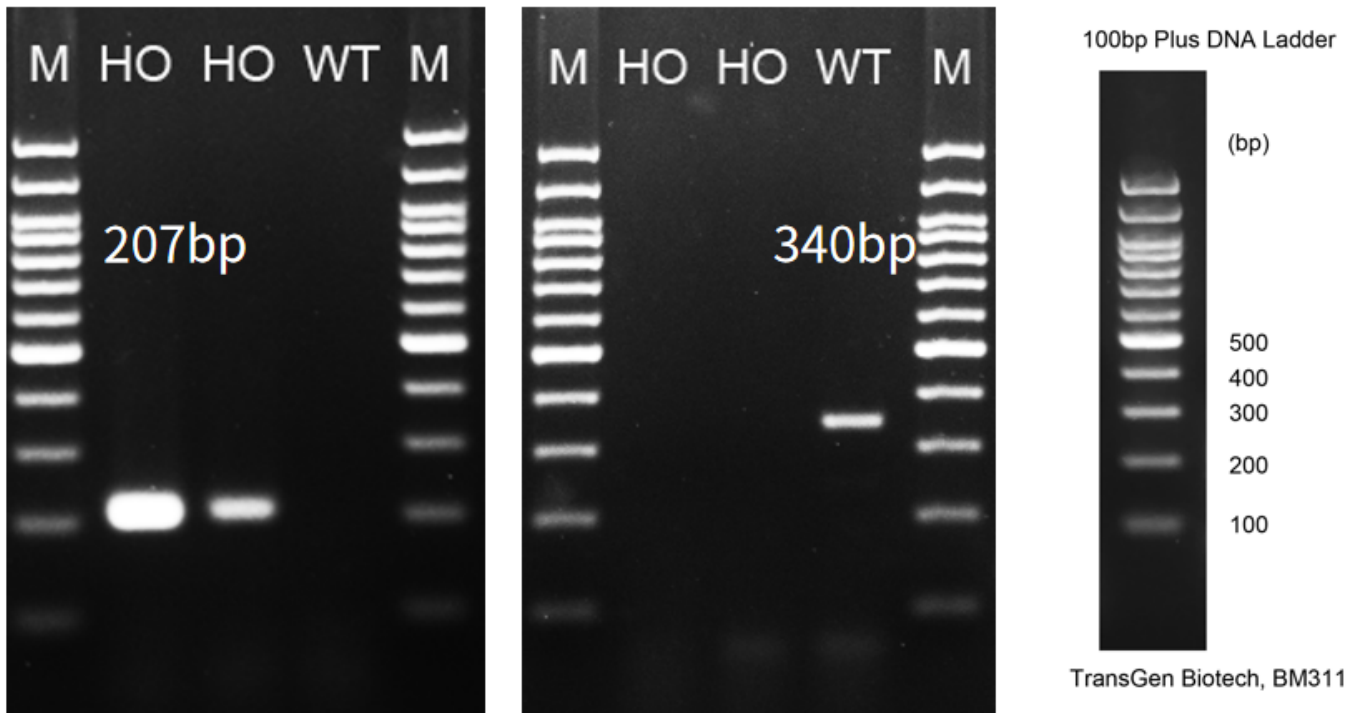


Fig.1 Detection of LRRC15 expression in heart by RT-PCR.

Wild type: only one band at 340 bp with primers F1/R1(mLrrc15);

Homozygous: only one band at 207 bp with primers F2/R2(hLRRC15).

Abbr. M, DNA marker; HO, homozygous; WT, wild type.

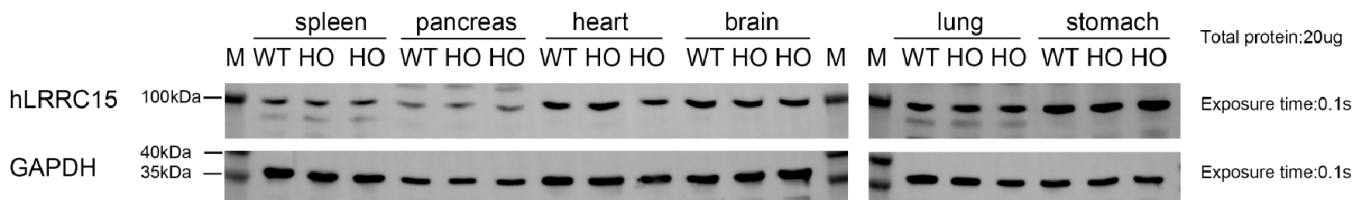


Fig.2 Detection of human LRRC15 expression in hLRRC15 mice by WB.

Abbr. M, marker; WT, wild type; HO, homozygote.

Note. The anti-human LRRC15 Antibody cross-reacted with mouse LRRC15 and humanized LRRC15.