

LL/2-hDDR1

Strain Information

SMOC番号 NMC-230014

Cell Line LL/2-*Ddr1*^{em1(hDDR1)Smoc}

維持形態 Validation of target gene expression completed

説明 DDR1 gene humanized LLC1/LL2 cell line

*Literature published using this strain should indicate: LL/2-hDDR1 cell line (Cat. NO. NMC-230014) was purchased from Shanghai Model Organisms Center, Inc..

表現型データ

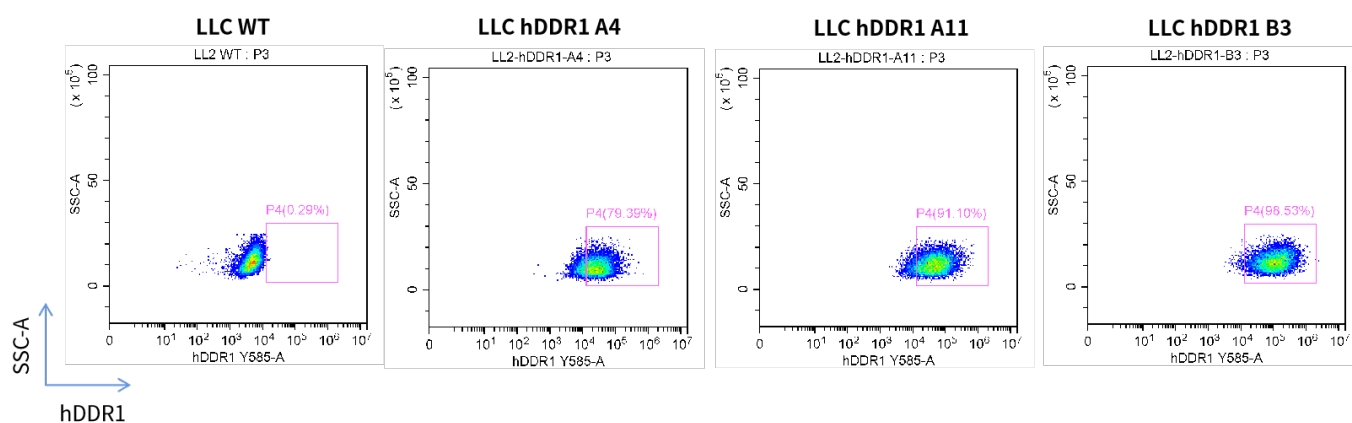


Fig1. hDDR1 expression on in vitro cultured cells of LLC-hDDR1