

# Itga2b-2A-CreERT2

系統名	C57BL/6Smoc- <i>Itga2b</i> <sup>em(2A-CreERT2-WPRE-pA)1Smoc</sup>
SMOC番号	NM-KI-225072
維持形態	Sperm cryopreservation

## 遺伝子の概要

Gene Symbol <i>Itga2b</i>	Synonyms	CD41; CD41B; GpIIb; AI172977; alphaIIb
	NCBI ID	<a href="#">16399</a>
	MGI ID	<a href="#">96601</a>
	Ensembl ID	<a href="#">ENSMUSG00000034664</a>
	Human Ortholog	ITGA2B

## 説明

2A-CreERT2-WPRE-pA expression cassette was knocked into the *Itga2b* gene .

\*Literature published using this strain should indicate: *Itga2b*-2A-CreERT2 mice (Cat. NO. NM-KI-225072) were purchased from Shanghai Model Organisms Center, Inc..

## 表現型データ

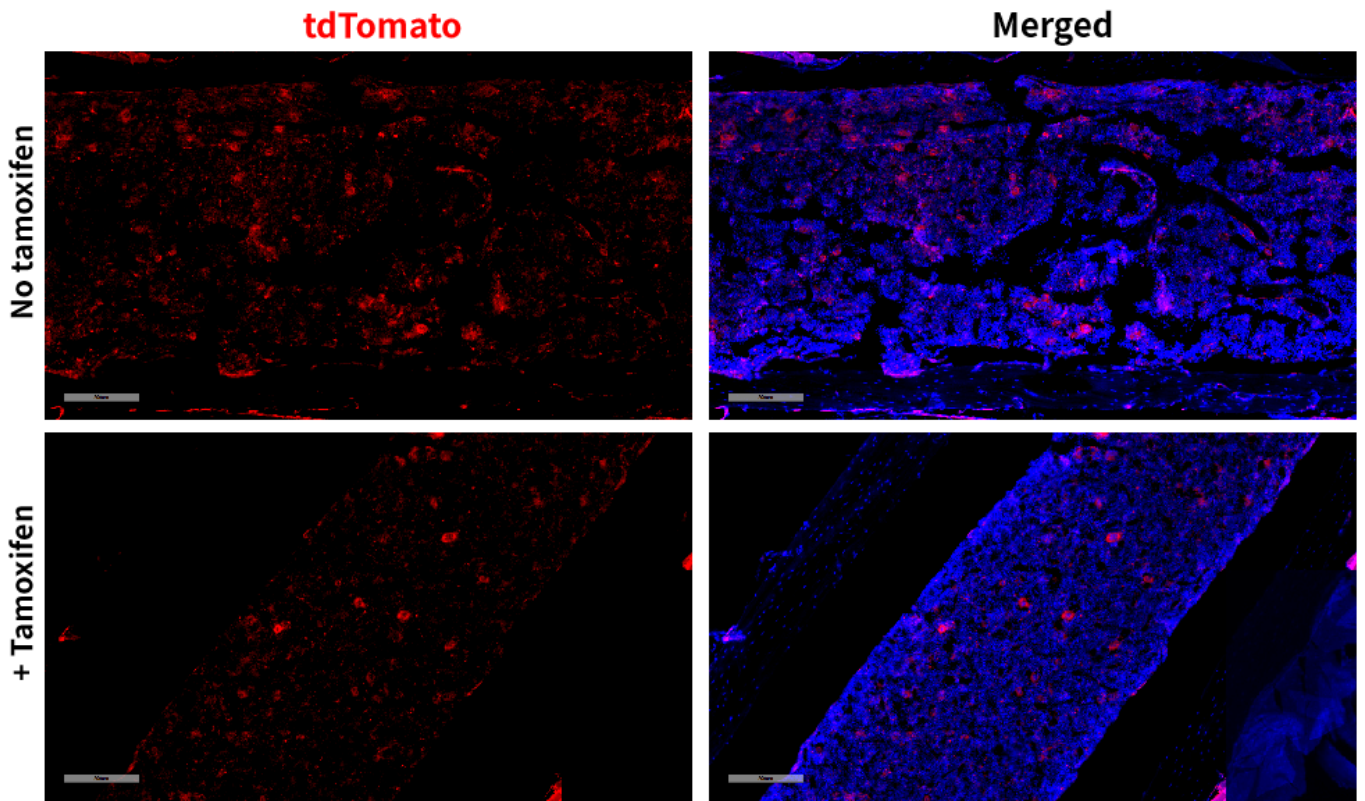


Fig1. CreERT2 mediated recombination in bone marrow of *Itga2bCreERT2/+; Rosa26tdTomato/+* mouse.

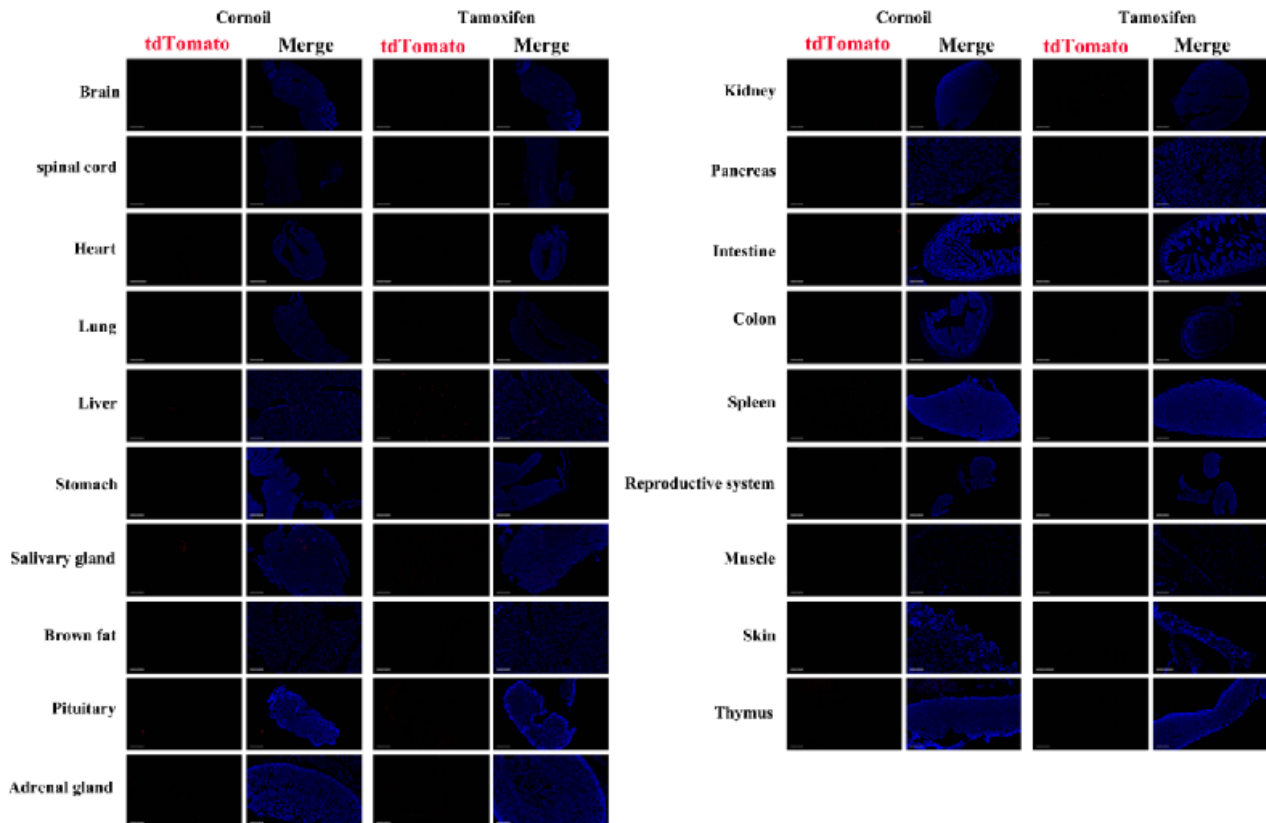


Fig2. Detection of tdTomato(red) in various tissues of

Itga2b<sup>CreERT2/+</sup>;Rosa26<sup>tdTomato/+</sup> mouse. Expression tissues include: bone marrow, salivary gland, pituitary gland, skin. A few cells expressed in lung, liver, stomach, adrenal gland, kidney, pancreas, small intestine, colon, spleen. Tissues that unexpressed include brain, spinal cord, heart, ovary, muscle, brown fat and thymus. (8-weeks old, female) (For more detailed information please contact our technical advisor.)

---