

Cdh16-CreERT2

系統名	C57BL/6Smoc- <i>Cdh16</i> ^{em(Kozak-CreERT2)1Smoc}
SMOC番号	NM-KI-225084
維持形態	Repository Live

遺伝子の概要

Gene Symbol Cdh16	Synonyms	-
	NCBI ID	12556
	MGI ID	106671
	Ensembl ID	ENSMUSG00000031881
	Human Ortholog	CDH16

説明

Kozak-CreERT2 expression cassette was knocked into the Cdh16 gene .

*Literature published using this strain should indicate: Cdh16-CreERT2 mice (Cat. NO. NM-KI-225084) were purchased from Shanghai Model Organisms Center, Inc..

表現型データ

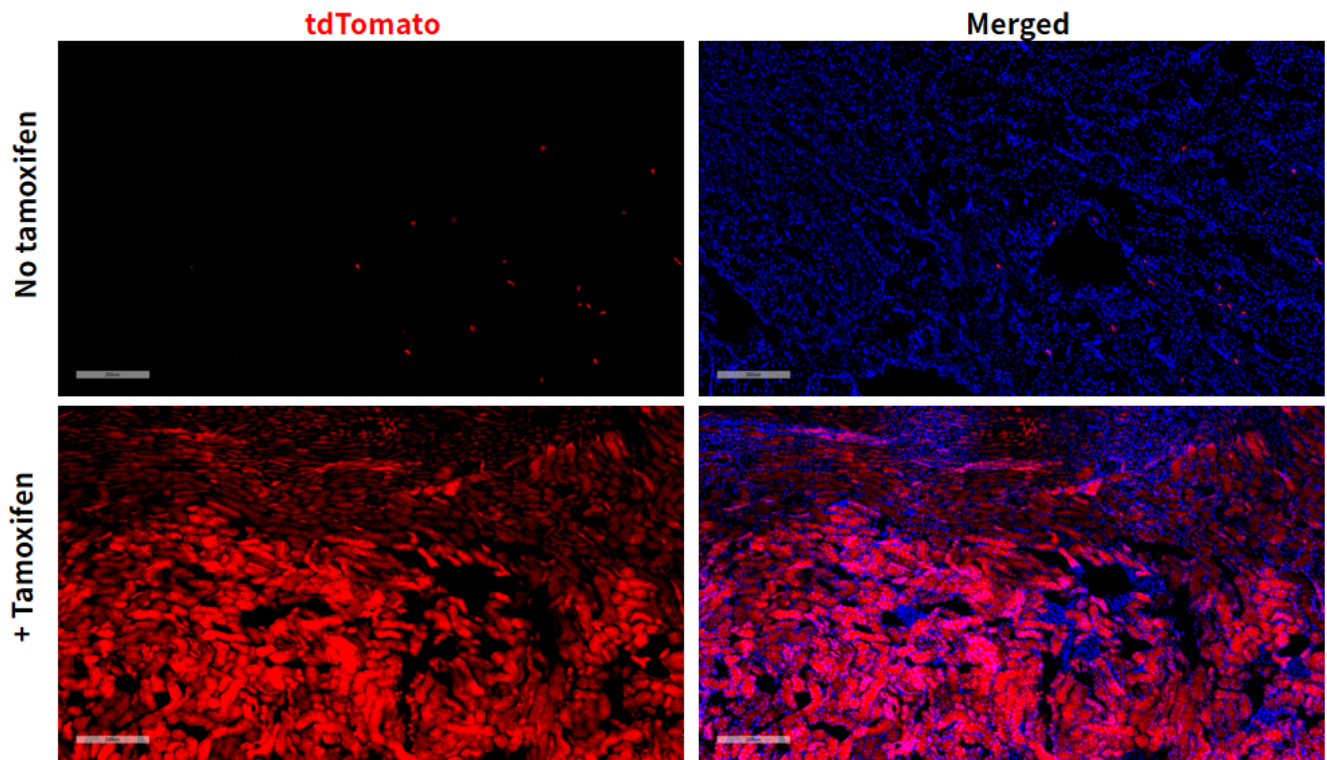


Fig 1. Cre-mediated recombination in kidney of $Cdh16^{CreERT2/+}$; $Rosa26^{tdTomato/+}$ mice.

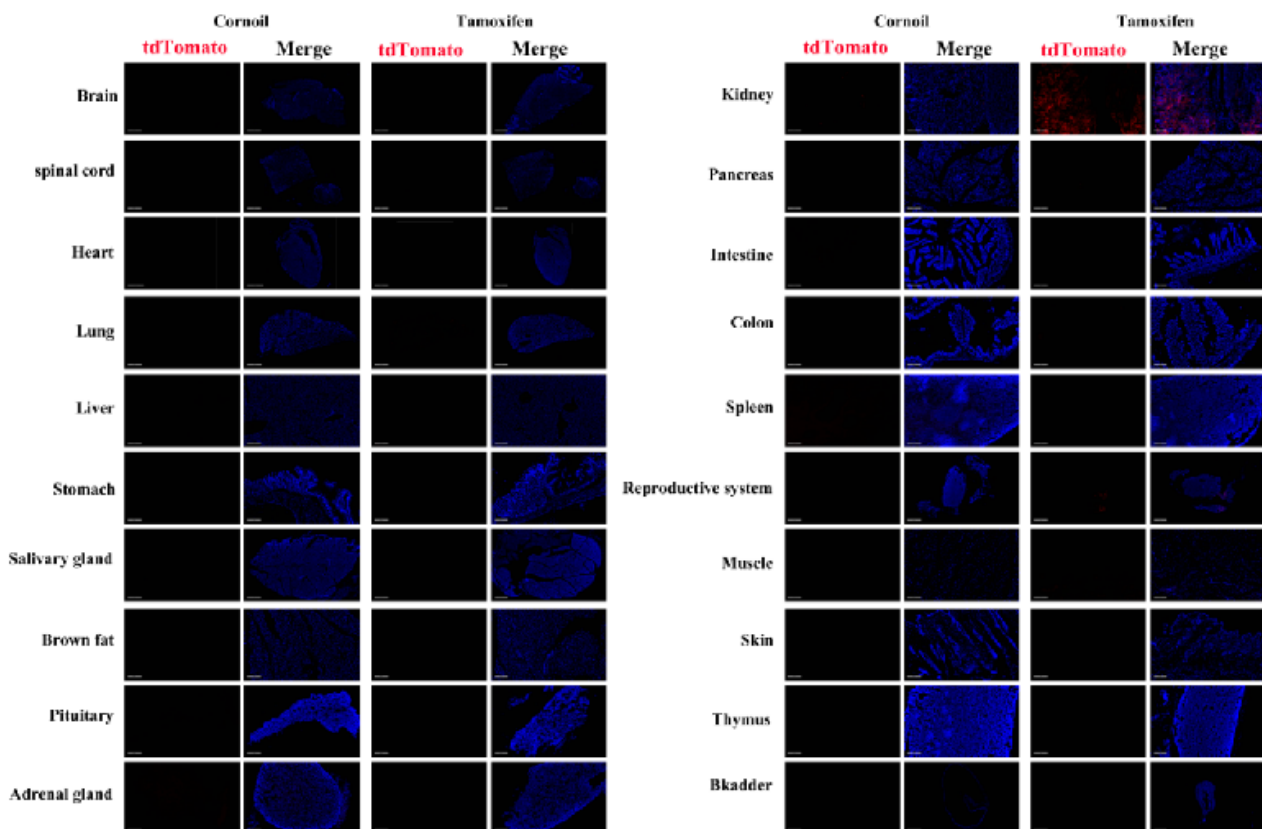


Fig 2. Detection of tdTomato (red) in various tissues of $Cdh16^{CreERT2/+}$; $Rosa26^{tdTomato/+}$ mice. Expression tissues include: kidney, lung, epididymis. A few cells expressed in pancreas. Tissues

that unexpressed include brain, spinal cord, heart, liver, stomach, salivary glands, brown fat, pituitary gland, adrenal gland, small intestine, colon, spleen, muscle, skin, thymus, bladder. (10-week old, male) (For more detailed information please contact our technical advisor.)
