

Syn1-IRES-CreERT2

系統名	C57BL/6Smoc- <i>Syn1</i> ^{em1(IRES-CreERT2)Smoc}
SMOC番号	NM-KI-231789
維持形態	Sperm cryopreservation

遺伝子の概要

Gene Symbol Syn1	Synonyms	Syn-1; Syn1-S
	NCBI ID	20964
	MGI ID	98460
	Ensembl ID	ENSMUSG00000037217
	Human Ortholog	SYN1

説明

The IRES-CreERT2 expression cassette was knocked into the Syn1 gene stop codon site.

*Literature published using this strain should indicate: Syn1-IRES-CreERT2 mice (Cat. NO. NM-KI-231789) were purchased from Shanghai Model Organisms Center, Inc..

表現型データ

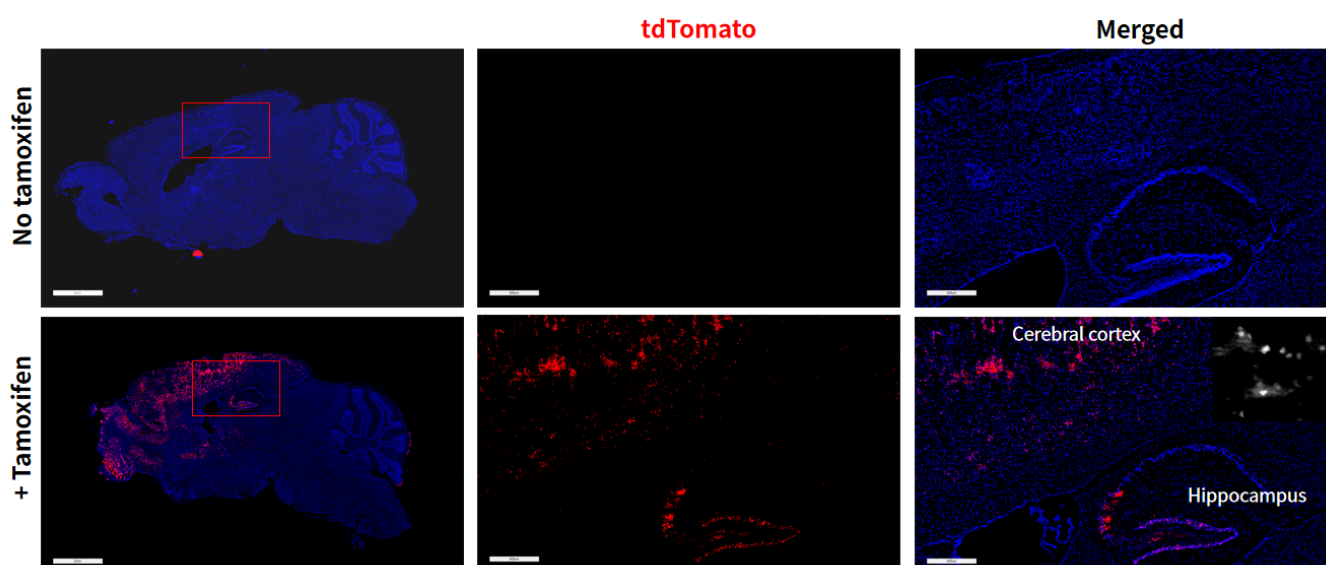


Fig 1. Cre-mediated recombination in brain of Syn1CreERT2/+; Rosa26tdTomato/+ mice.

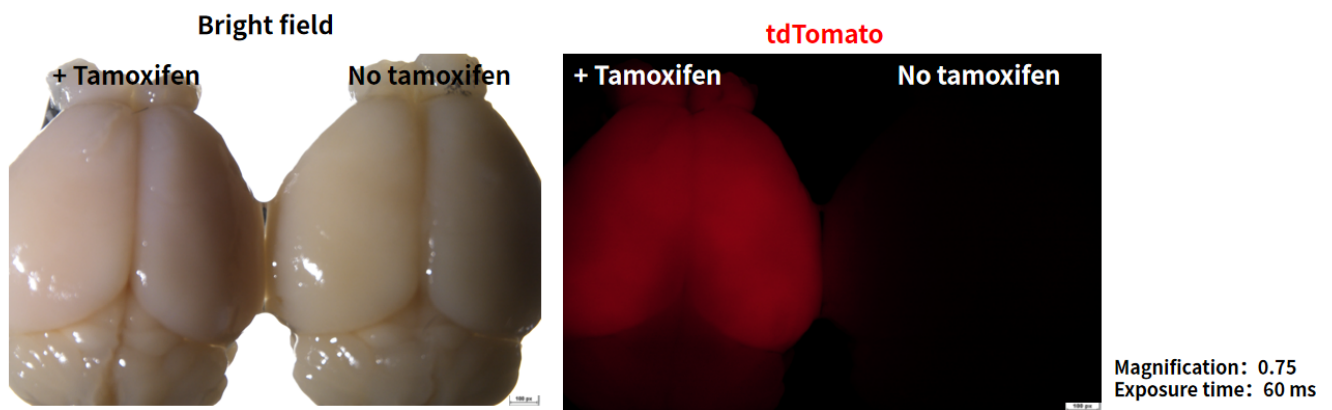


Fig 2. Cre-mediated recombination in brain of Syn1CreERT2/+; Rosa26tdTomato/+ mice.

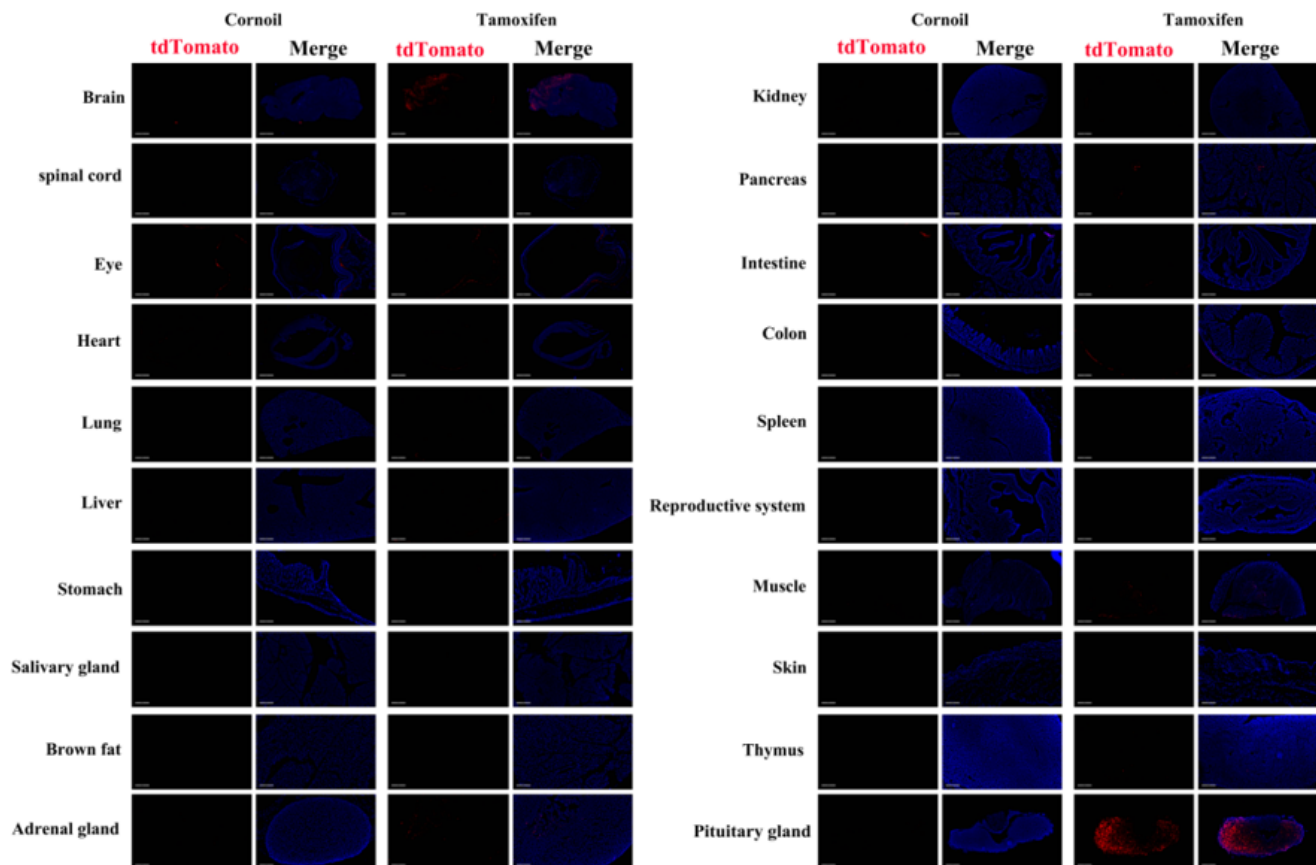


Fig 3. Detection of tdTomato (red) in various tissues of Syn1CreERT2/+; Rosa26tdTomato/+ mice. Expression tissues include: brain, retina, islet, pituitary. A few cells expressed in spinal cord, heart, lung, liver, adrenal gland, kidney, small intestine, colon, muscle and thymus. Tissues that unexpressed include stomach, salivary glands, brown fat, spleen, uterus, skin. Tamoxifen induction began at 35 days of age, with testing at 45 days. (45-day old, female) (For more detailed information please contact our technical advisor.)

