

MC38-B2m KO

Strain Information

SMOC番号 NMC-230048

Cell Line MC38-*B2m*^{em15moc}

維持形態 Validation of tumorigenic capacity completed

説明 B2m gene knockout MC38 cell line

*Literature published using this strain should indicate: MC38-B2m KO cell line (Cat. NO. NMC-230048) was purchased from Shanghai Model Organisms Center, Inc..

表現型データ

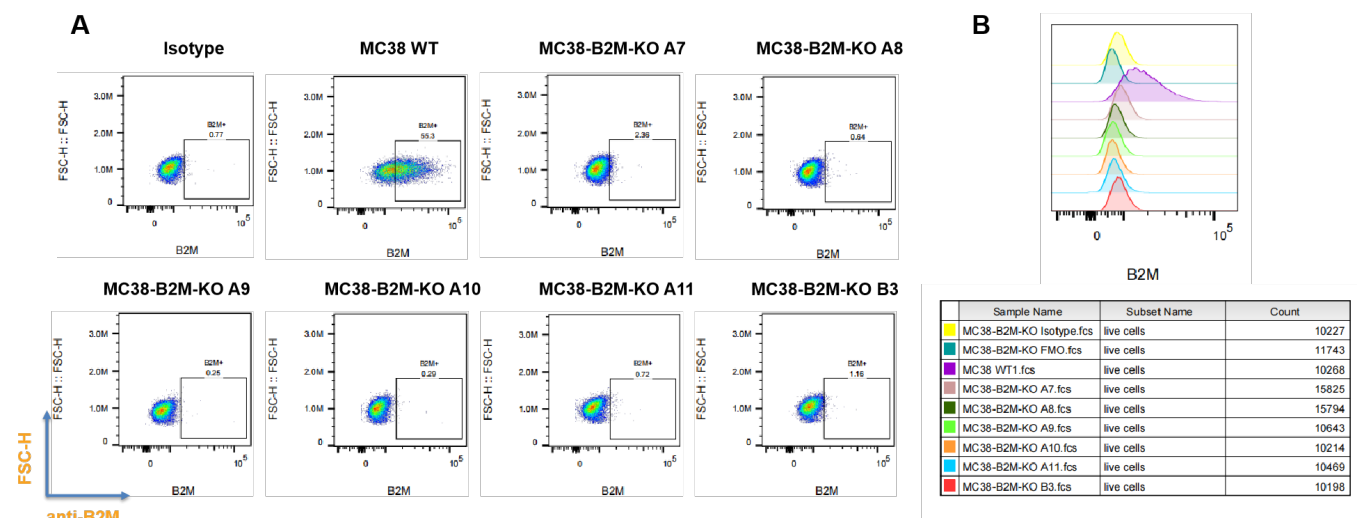


Fig 1. Detection of B2m expression on *in vitro* cultured cells of MC38-B2M-KO cell line by FACS.

Fig1. Detection of B2m expression on *in vitro* cultured cells of MC38-B2M-KO cell line by FACS.

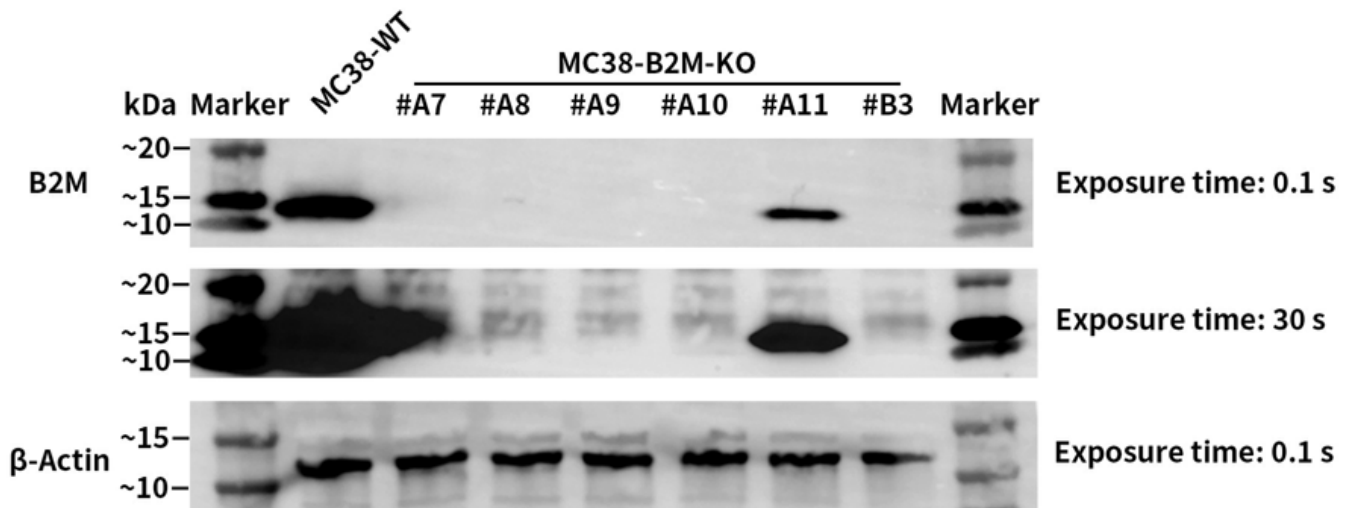


Fig2. Detection of B2M expression on *in vitro* cultured cells of MC38-B2M-KO cell line by WB.

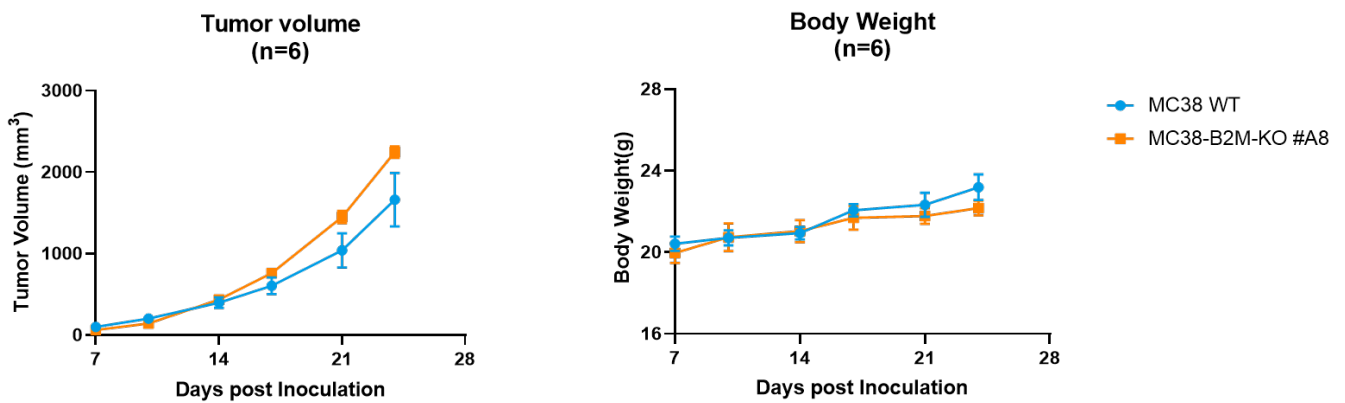


Fig3. *In vivo* validation of MC38-B2M-KO cells in C57BL/6 mice (n=6).

C57BL/6 mice were inoculated with MC38-B2M-KO subcutaneously at 1×10^6 cells/mouse inoculum for tumor development.

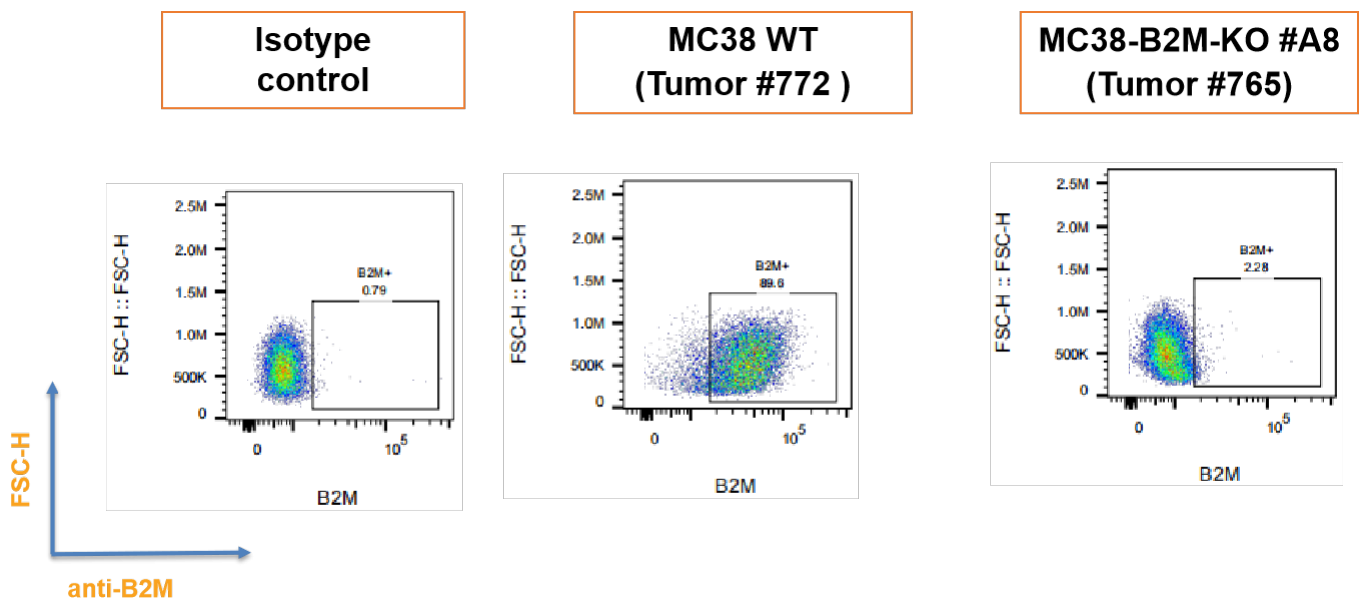


Fig4. B2M expression in tumors after *in vivo* growth of MC38-B2M-KO in wild type C57BL/6 mice
The tumors were collected at day 18 post tumor cell inoculation.
