

# MC38-hCD24/hPD-L1

## Strain Information

SMOC番号 NMC-230052

Cell Line MC38-hCD24/hPD-L1

維持形態 Validation of tumorigenic capacity completed

説明 The MC38-hCD24/hPD-L1 cell line is the MC38 colon cancer tumor cell line expressing human CD24 gene and human PD-L1 gene.

\*Literature published using this strain should indicate: MC38-hCD24/hPD-L1 cell line (Cat. NO. NMC-230052) was purchased from Shanghai Model Organisms Center, Inc..

## 表現型データ

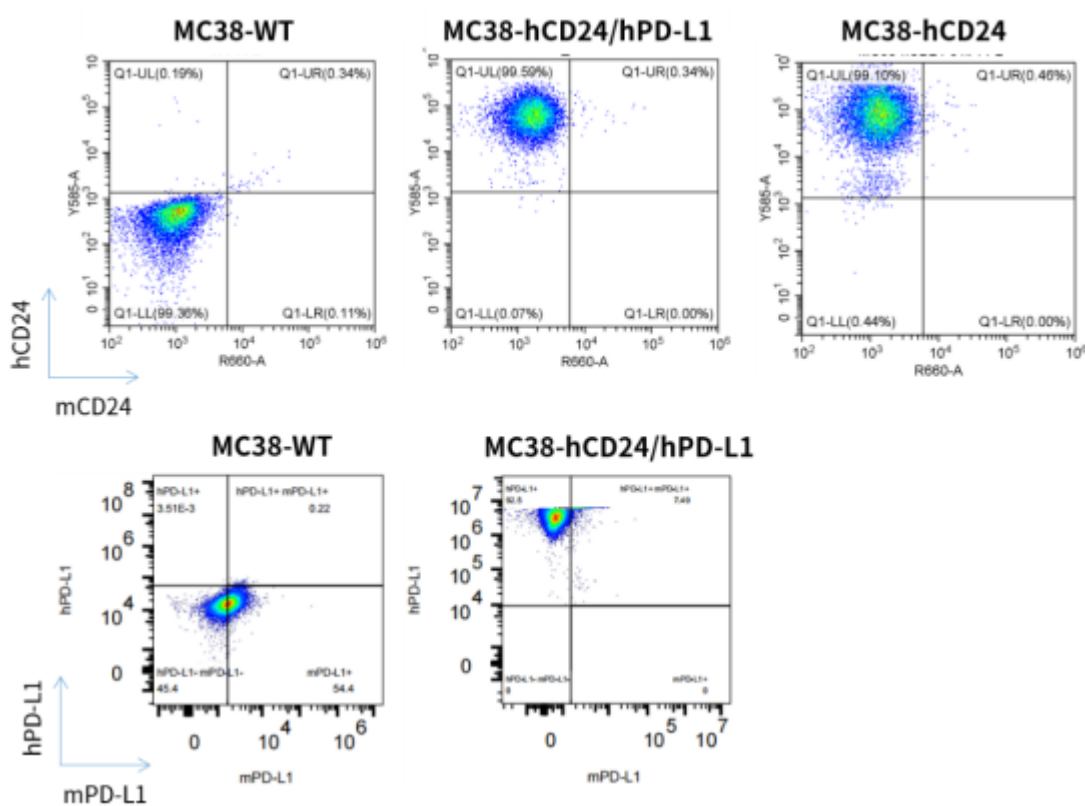


Fig.1 CD24

and PD-L1 expression in MC38-hCD24/hPD-L1 cell line

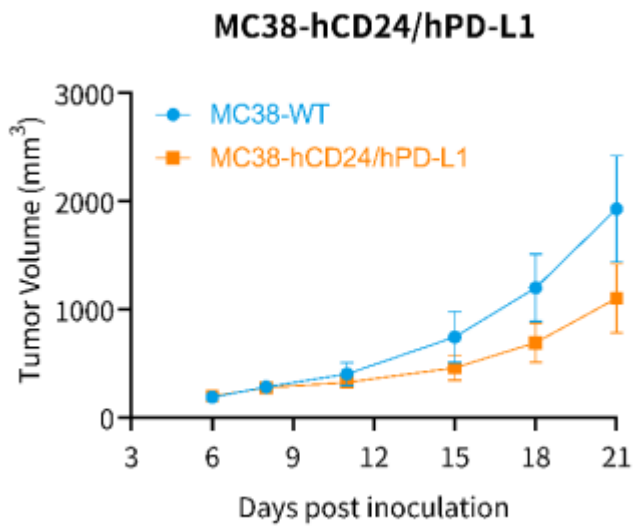


Fig.2 Tumor growth curve of MC38-hCD24/hPD-L1 syngeneic model

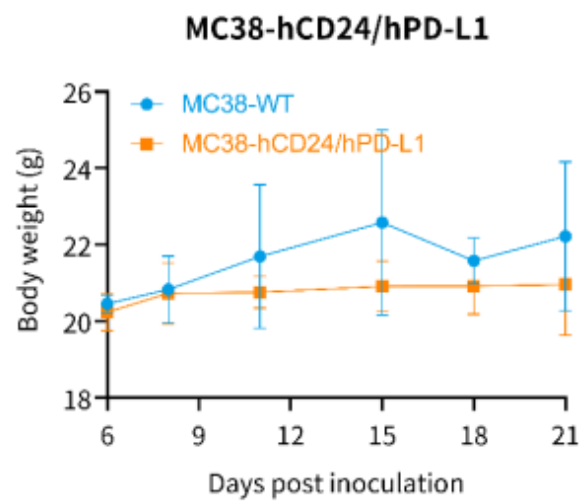
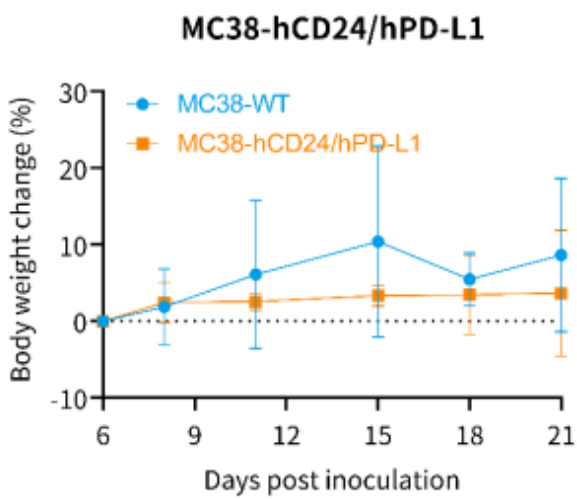


Fig.3 Body weight change of MC38-hCD24/hPD-L1 syngeneic model

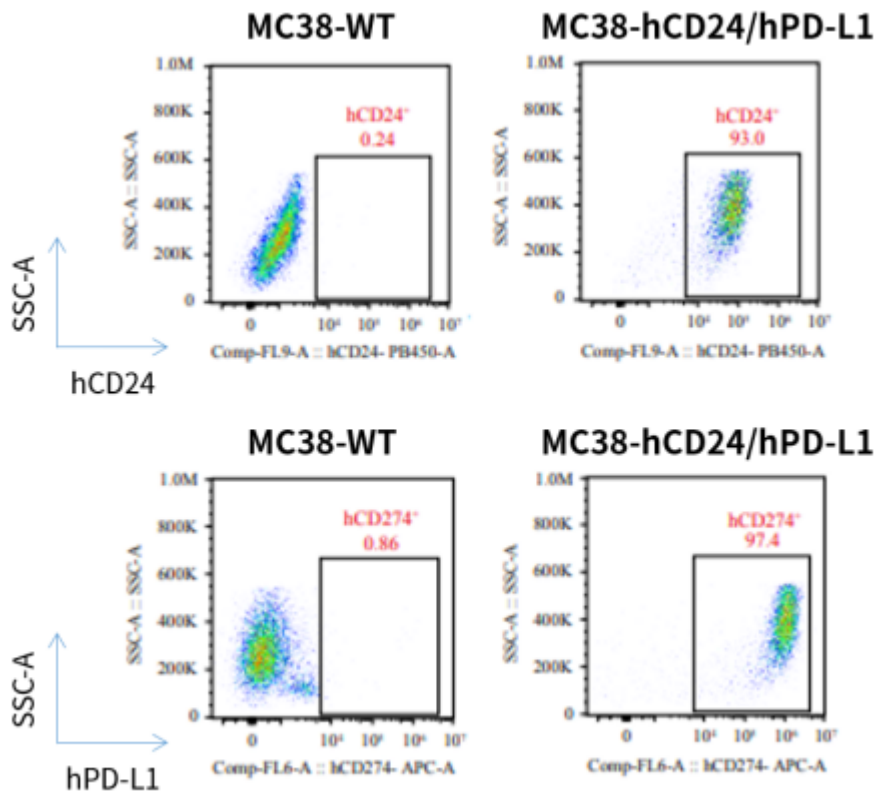


Fig.4 The expression of hCD24 and hPD-L1 in humanized modified tumors by FACS