

# MC38-Stk11 KO

## Strain Information

|           |  |
|-----------|--|
| SMOC番号    | NMC-230070   |
| Cell Line | MC38-Stk11 KO  |
| 維持形態      | Validation of tumorigenic capacity completed   |
| 説明        | Stk11 gene knockout MC38 cell line   |
|           | *Literature published using this strain should indicate: MC38-Stk11 KO cell line (Cat. NO. NMC-230070) was purchased from Shanghai Model Organisms Center, Inc.. |

## 表現型データ

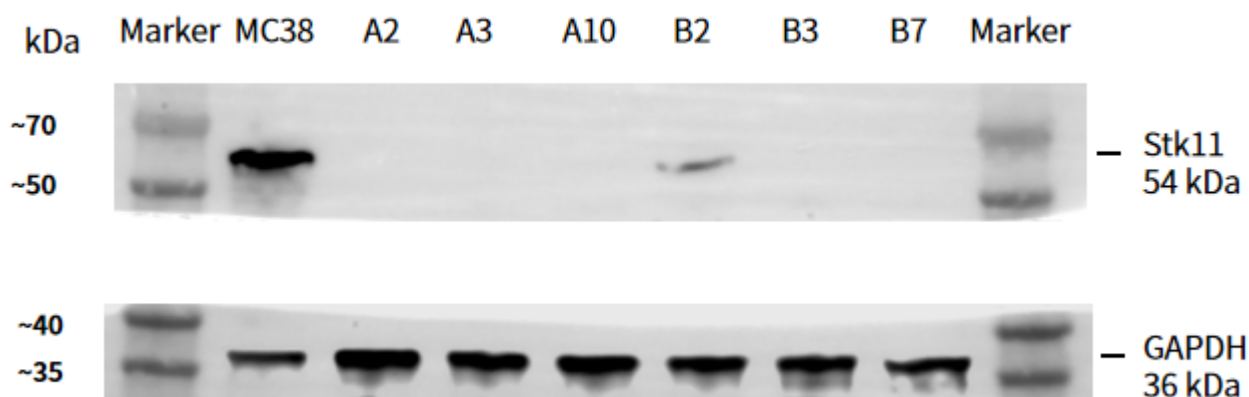


Fig1. Stk11 expression on in vitro cultured cells of MC38-Stk11-KO.

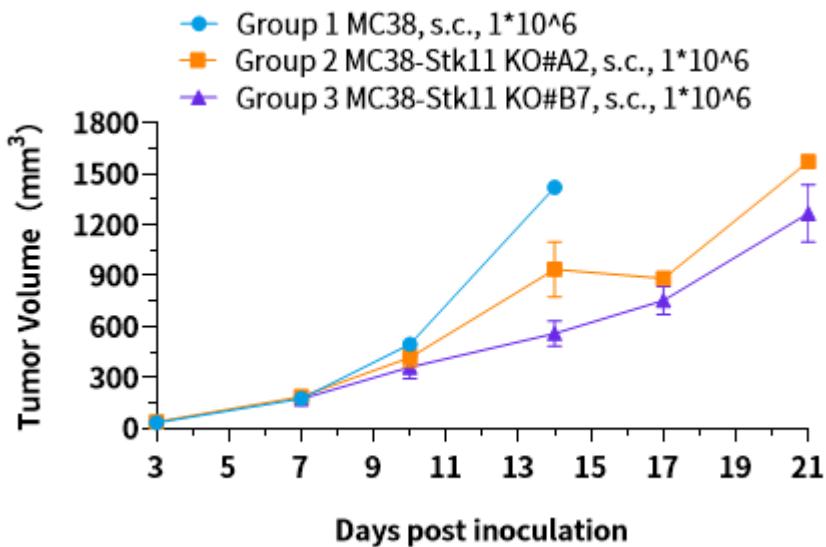


Fig2. In vivo validation of MC38-Stk11-KO in C57BL/6 mice. C57BL/6 mice were inoculated with MC38-Stk11-KO subcutaneously at  $1 \times 10^6$  cells/mouse inoculum for tumor development. The day of vaccination for mice is defined as Day 0, and tumor measurement and weight measurement begin on the 3rd day after vaccination, twice a week.

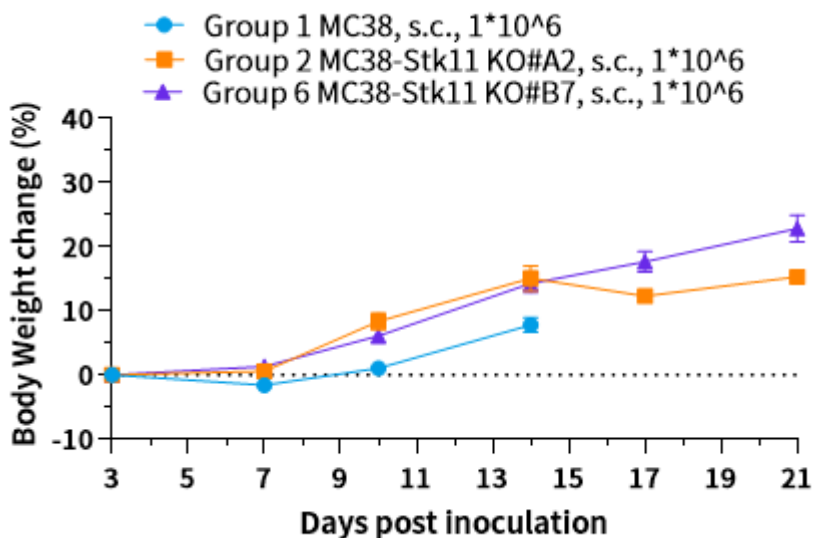


Fig3. In vivo validation of MC38-Stk11-KO in C57BL/6 mice. C57BL/6 mice were inoculated with MC38-Stk11-KO subcutaneously at  $1 \times 10^6$  cells/mouse inoculum for tumor development. The day of vaccination for mice is defined as Day 0, and tumor measurement and weight measurement begin on the 3rd day after vaccination, twice a week.

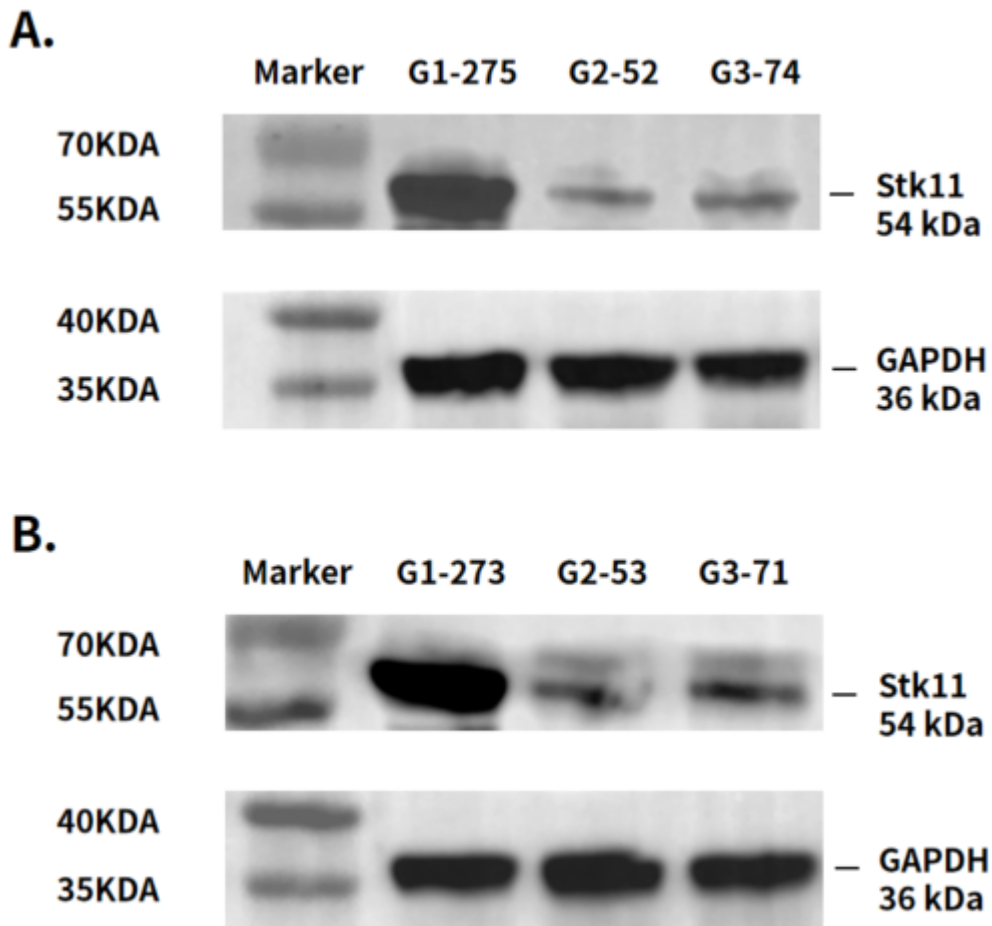


Fig4. Stk11 expression in tumors after in vivo growth of MC38-Stk11-KO in wild type C57BL/6 mice. When the mean tumor volume (MTV) reaches 500-800 mm<sup>3</sup>, take one tube from each group and send it to Western Blot for testing (Markers: mGapdh, mStk11); When the MTV reaches 1000-1500mm<sup>3</sup>, take 2 tubes from each group and send them to Western Blot for testing (Markers: mGapdh, mStk11). A, the MTV reaches 800 mm<sup>3</sup>. B, the MTV reaches 1500 mm<sup>3</sup>.