

# hFCRN/hALB(SD)

## 遺伝子の概要

### 説明

The hALB(SD)(NR-HU-200001) was crossed with hFCRN(SD)(NR-HU-200002) to generate hFCRN(SD)/hALB(SD) mice.

\*Literature published using this strain should indicate: hFCRN/hALB(SD) rats (Cat. NO. NR-HU-233317) were purchased from Shanghai Model Organisms Center, Inc..

### 表現型データ

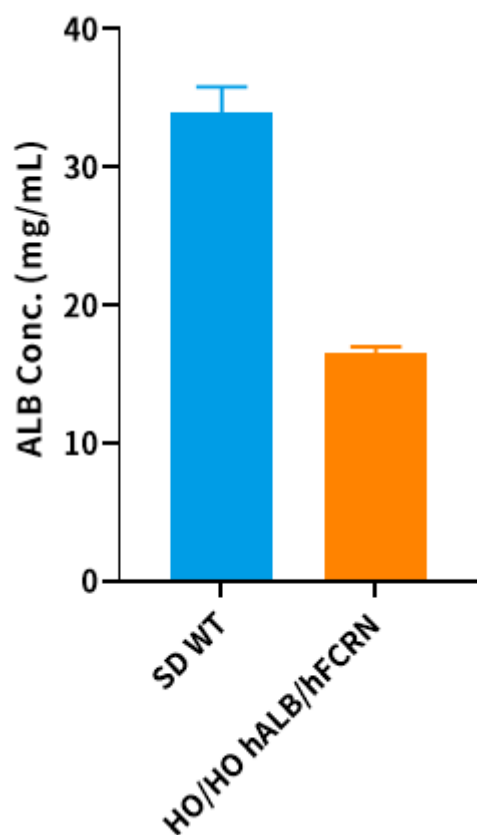


Fig.1 Detection of ALB expression in serum by blood biochemical analysis (n=4).

Abbr. HO, homozygous; WT, wild type.

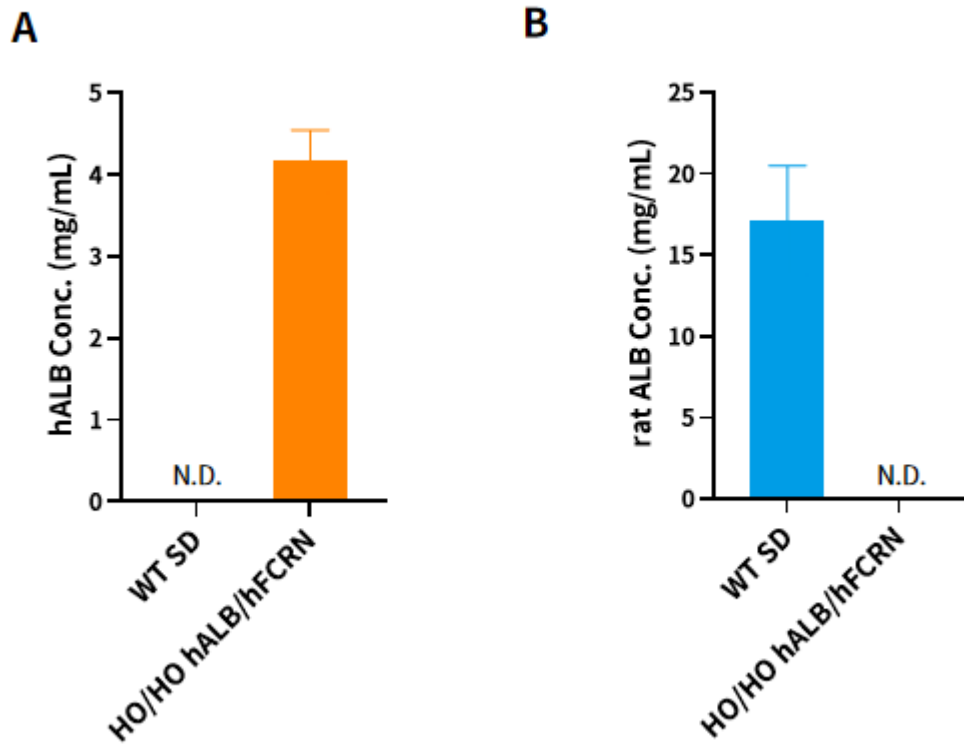


Fig.2 Detection of hALB (A) and rALB (B) expression in serum by ELISA (n=3).

Abbr. HO, homozygous; WT, wild type.

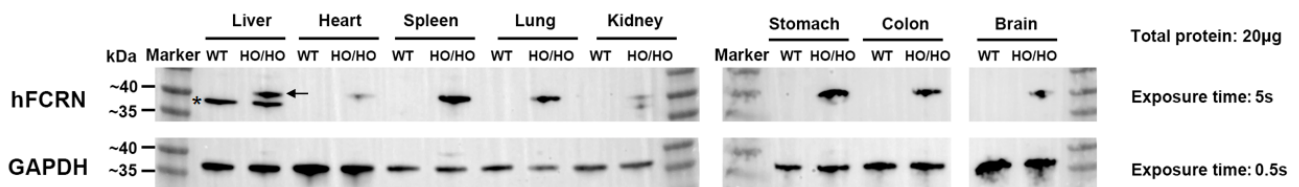


Fig.3 Expression characterization of hFCRN in hALB/hFCRN dKI rat by Western blot. (Arrow indicates expected molecular weight and asterisk indicates a nonspecific band)

Martix	Dose (mg/kg)	Group	Test articles	T <sub>1/2</sub>	T <sub>max</sub>	C <sub>max</sub>	AUC <sub>last</sub>	AUC <sub>0-∞</sub>	CI	MRT <sub>last</sub>
				h	h	μg/mL	h*μg/mL	h*μg/mL	mL/h/kg	h
Serum	13	G1	TA	162	0.50	299	26505	27875	0.47	159
		G2	TA-YTE	226	0.50	290	33743	38646	0.34	201
		G3	TA-N434A	378	0.50	328	43592	52243	0.26	205

**Table 1** Pharmacokinetic parameters of test articles in hFcRn/hALB dKI rats.

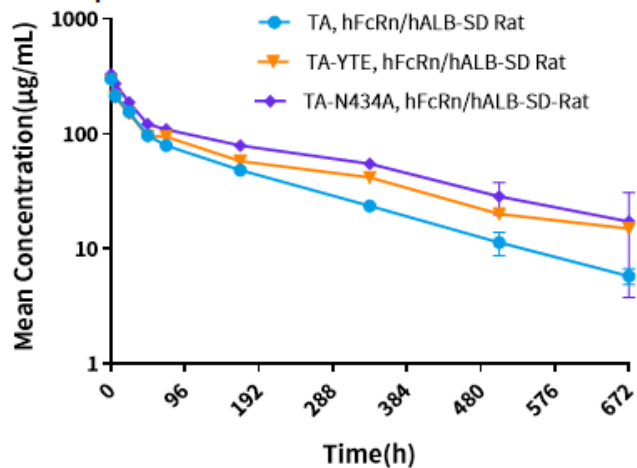


Fig.4 Blood concentration curve of test articles in hFcRn/hALB dKI rats.

In hFcRn/hALB dKI rats, the half-life time: TA-N434A > TA-YTE > TA. (In cooperation with the third party)

### Keytruda PK Study

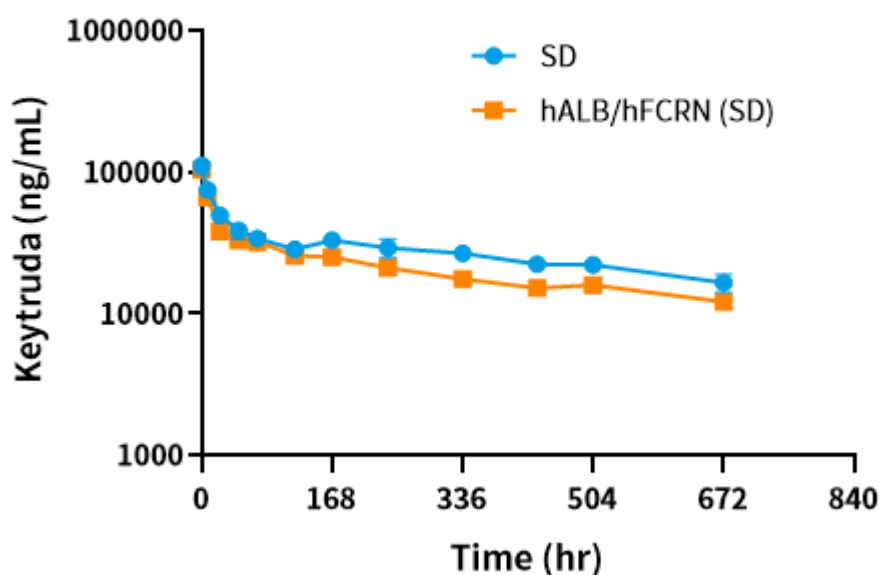


Fig.5 PK study of Keytruda in hALB/hFCRN dKl rat. (n=3/time point/group)

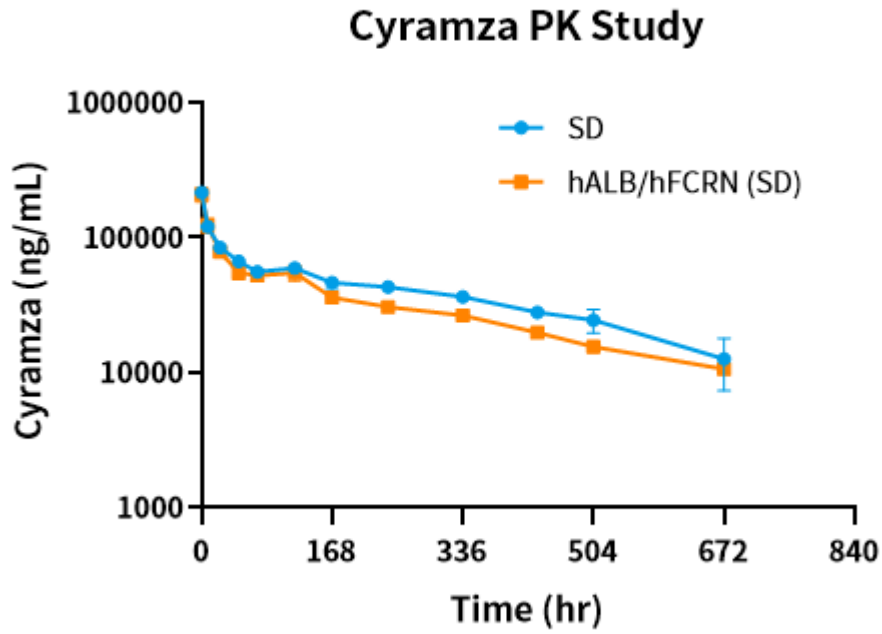


Fig.6 PK study of Cyramza in hALB/hFCRN dKl rat. (n=3/time point/group)