

# LKB1-KO/Kras-G12D-Luc

## Strain Information

SMOC番号	NM-YD07
Cell Line	LKB1-KO/Kras-G12D-Luc
維持形態	Validation of tumorigenic capacity completed
説明	<p>derived from LKB1-KO/Kras-G12D-Luc mice spontaneous lung cancer model</p> <p>*Literature published using this strain should indicate: LKB1-KO/Kras-G12D-Luc cell line (Cat. NO. NM-YD07) was purchased from Shanghai Model Organisms Center, Inc..</p>

## 表現型データ

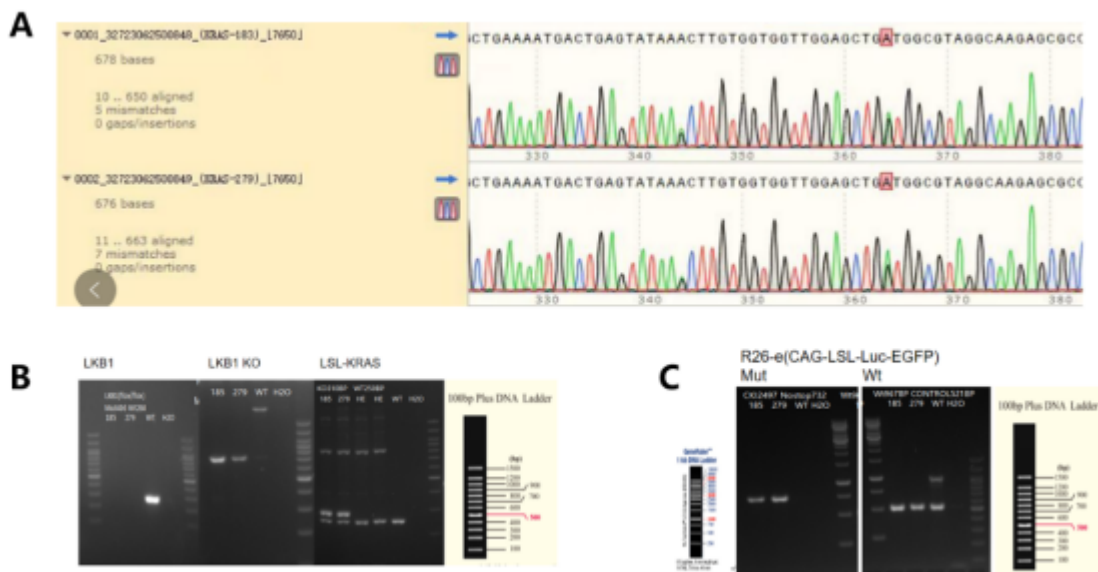


Fig1. The genotype of LKB1-KO/Kras-G12D-Luc cell was identified by PCR

WT: wild-type cells; H2O: negative water control; 100bp DNA marker from Transgen(BM311)

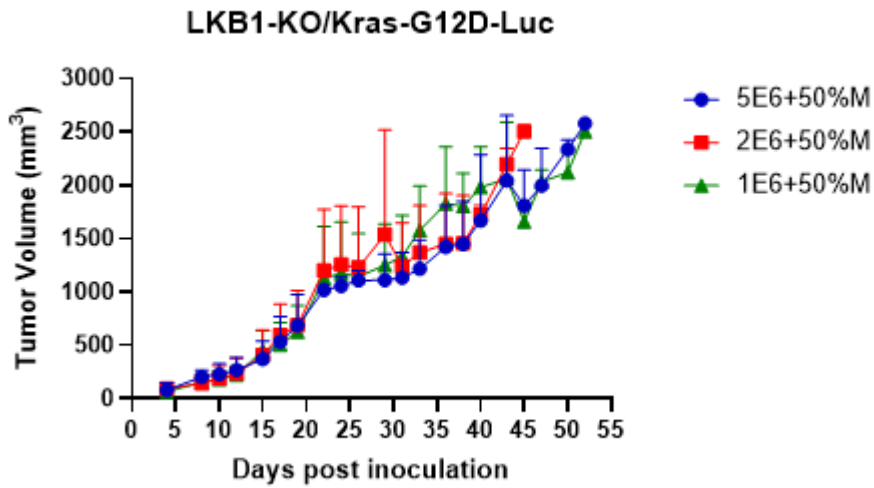


Fig2. Tumor growth curve in LKB1-KO/Kras-G12D-Luc subcutaneously transplanted tumor model (n=6)

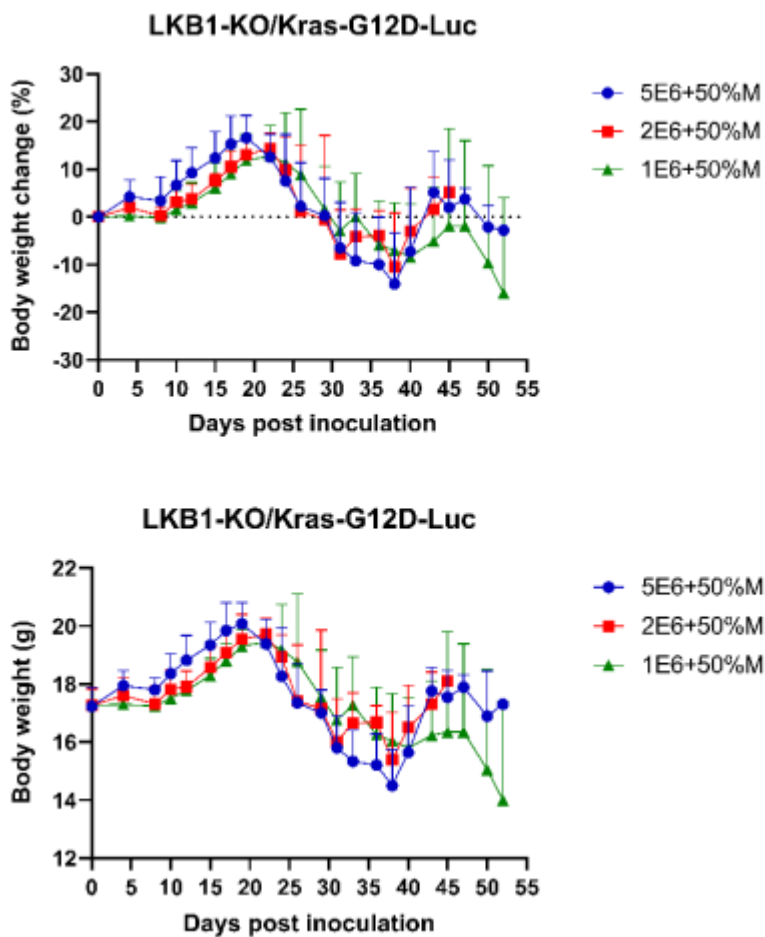


Fig3. Body weight change in LKB1-KO/Kras-G12D-Luc subcutaneously transplanted tumor model (n=6)

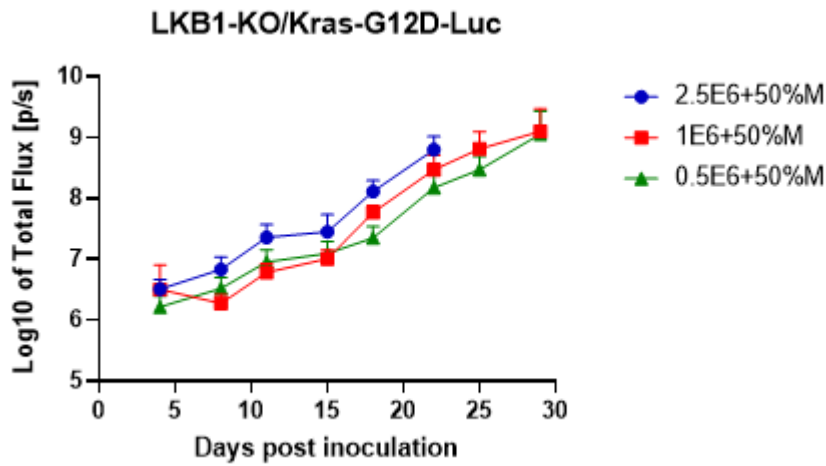


Fig4. Signal increase curve of LKB1-KO/Kras-G12D-Luc cells were implanted orthotopically in the lung (n=6)

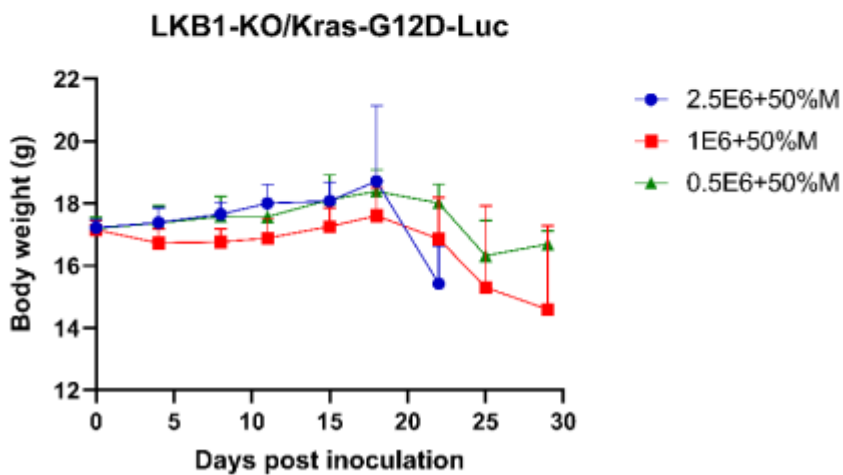
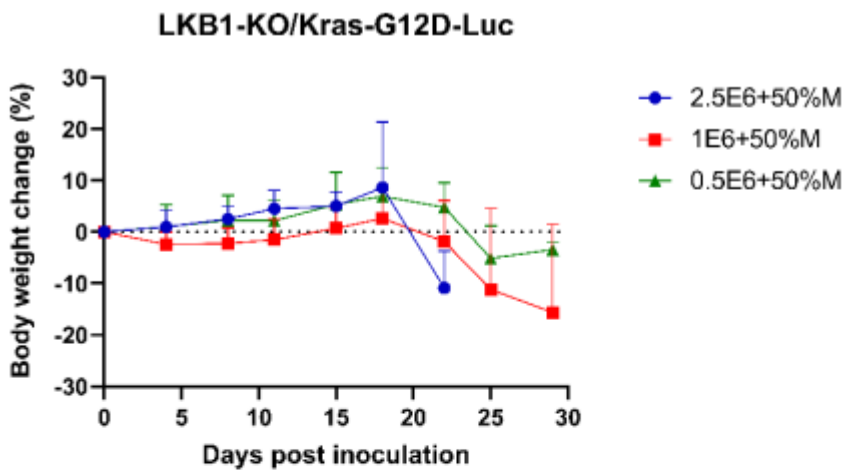


Fig5. Body weight change in orthotopically injected LKB1-KO/Kras-G12D-Luc model (n=6)

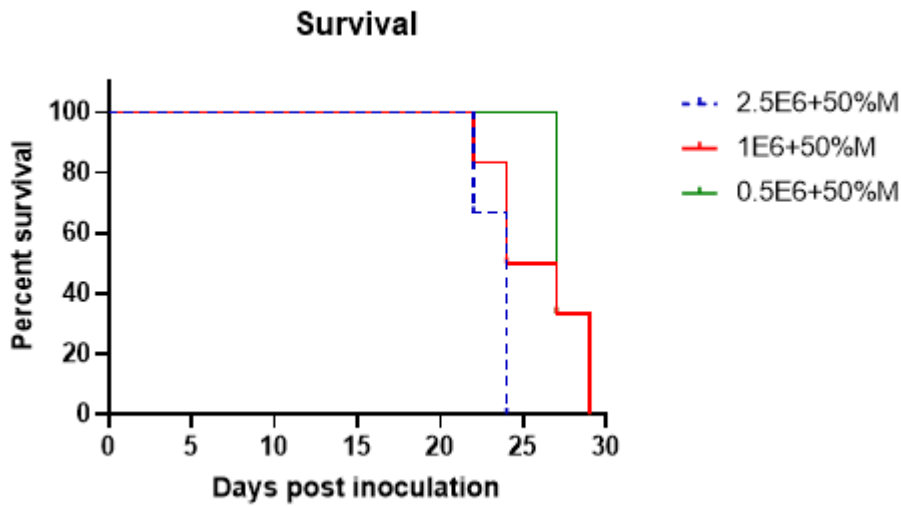


Fig6. Survival curve of LKB1-KO/Kras-G12D-Luc orthotopic model (n=6)

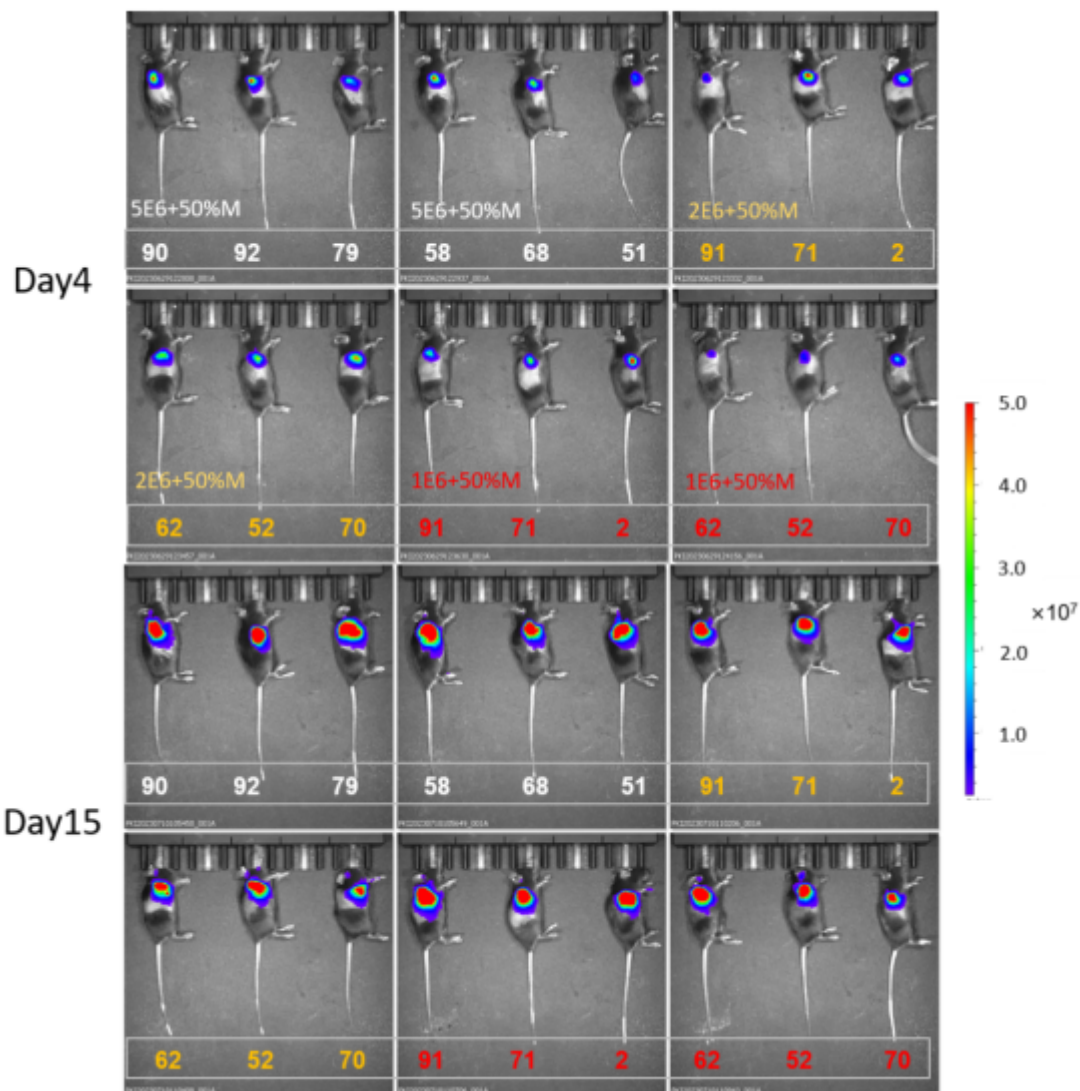


Fig7. Bioluminescence imaging of LKB1-KO/Kras-G12D-Luc subcutaneously transplanted tumor model at different timepoints

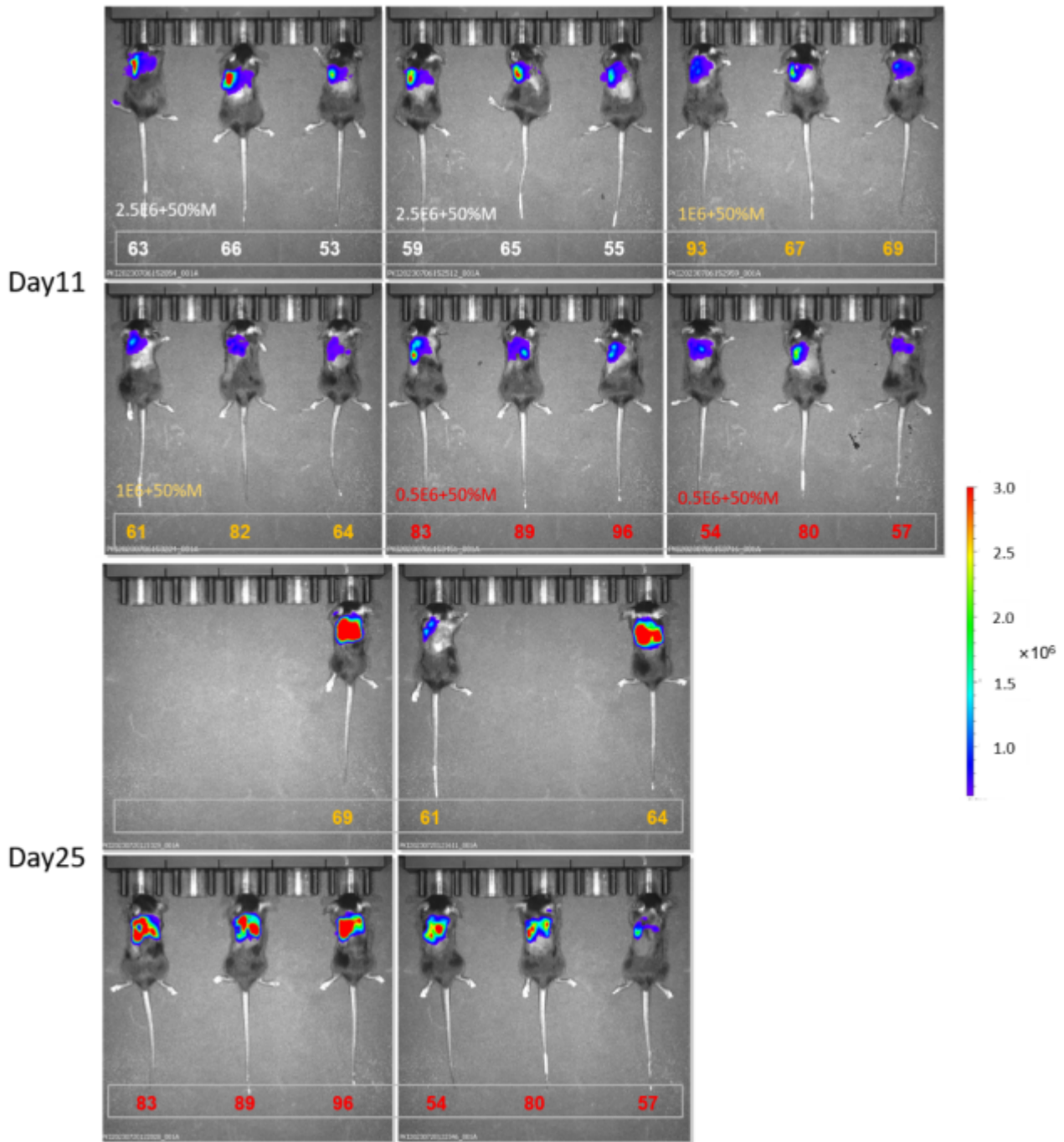


Fig8. Bioluminescence imaging of LKB1-KO/Kras-G12D-Luc orthotopic model (n=6)