

hHLA-A2*01

系統名	C57BL/6Smoc- <i>H2-D1</i> ^{em1hHLA-A2*01Smoc}
SMOC番号	NM-KI-233927
維持形態	Sperm cryopreservation

遺伝子の概要

Gene Symbol H2-D1	Synonyms	H-2D; H2-D; H2-K1
	NCBI ID	14964
	MGI ID	95896
	Ensembl ID	ENSMUSG00000073411
	Human Ortholog	HLA-A, HLA-B, HLA-C
Gene Symbol H2-D1	Synonyms	H-2D H2-D H2-K1
	NCBI ID	14964
	MGI ID	95896
	Ensembl ID	ENSMUSG00000073411
	Human Ortholog	H2-D1

説明

The endogenous mouse H2-D1 gene was replaced by human HLA-A2*01 gene .

*Literature published using this strain should indicate: hHLA-A2*01 mice (Cat. NO. NM-KI-233927) were purchased from Shanghai Model Organisms Center, Inc..

表現型データ

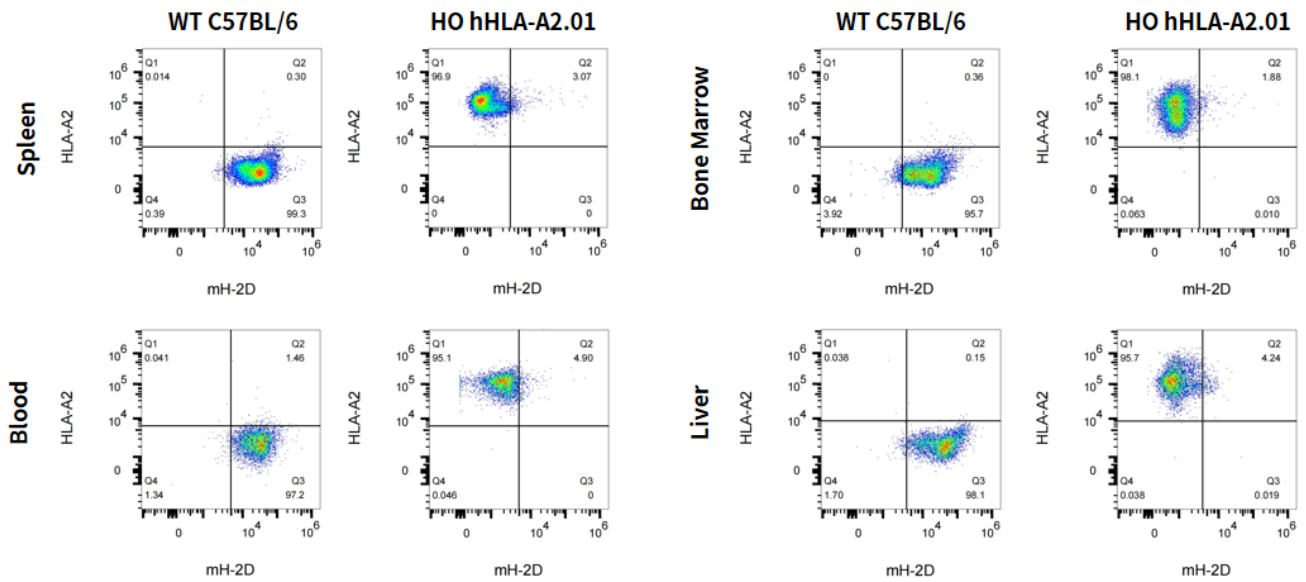


Fig.1 Detection of mH-2D and HLA-A2 expression on overall Leukocytes in hHLA-A2.01 dKI mice (female, 6-8wks).

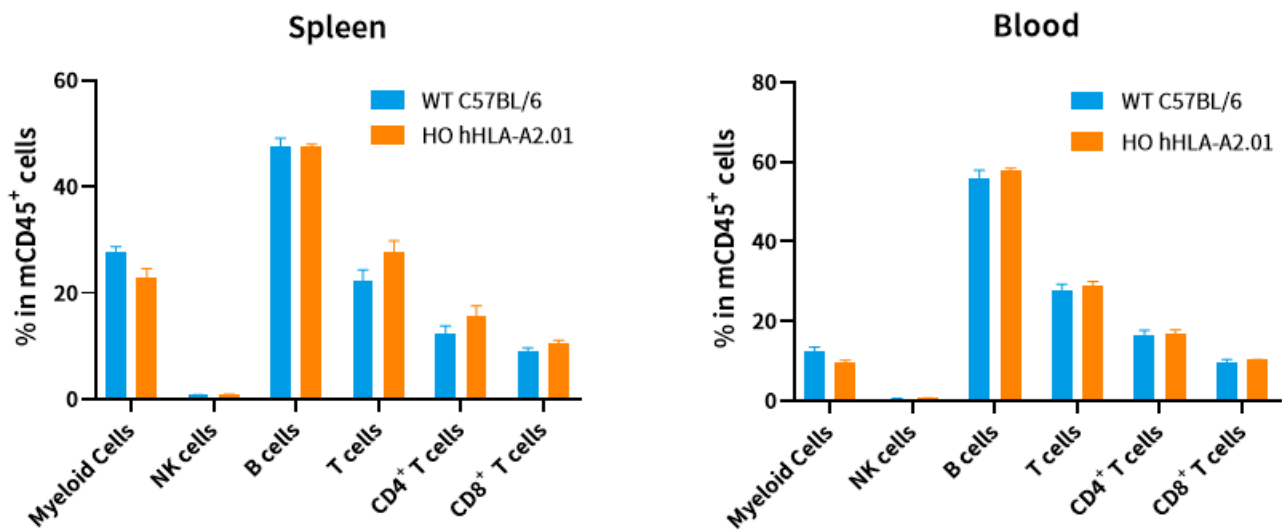


Fig.2 Analysis of leukocytes cell subpopulation in HO hHLA-A2.01 and WT C57BL/6 mice (female, 6-8wks, n=3).

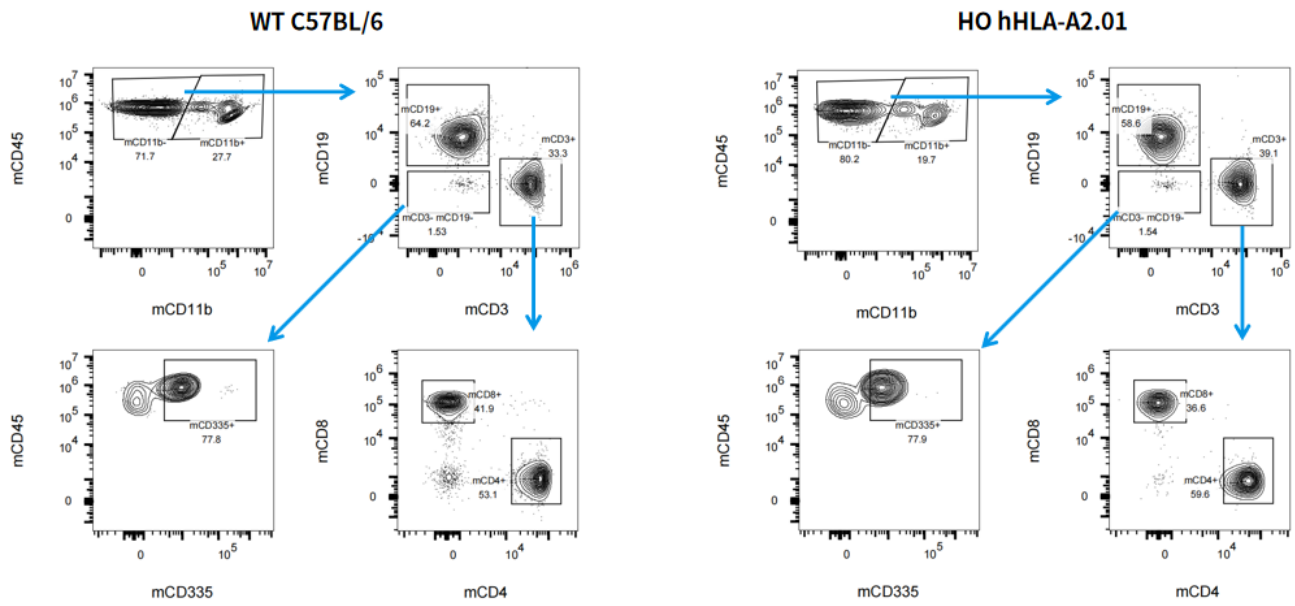


Fig.3 Analysis of leukocytes cell subpopulation in Spleen (female, 6-8wks).

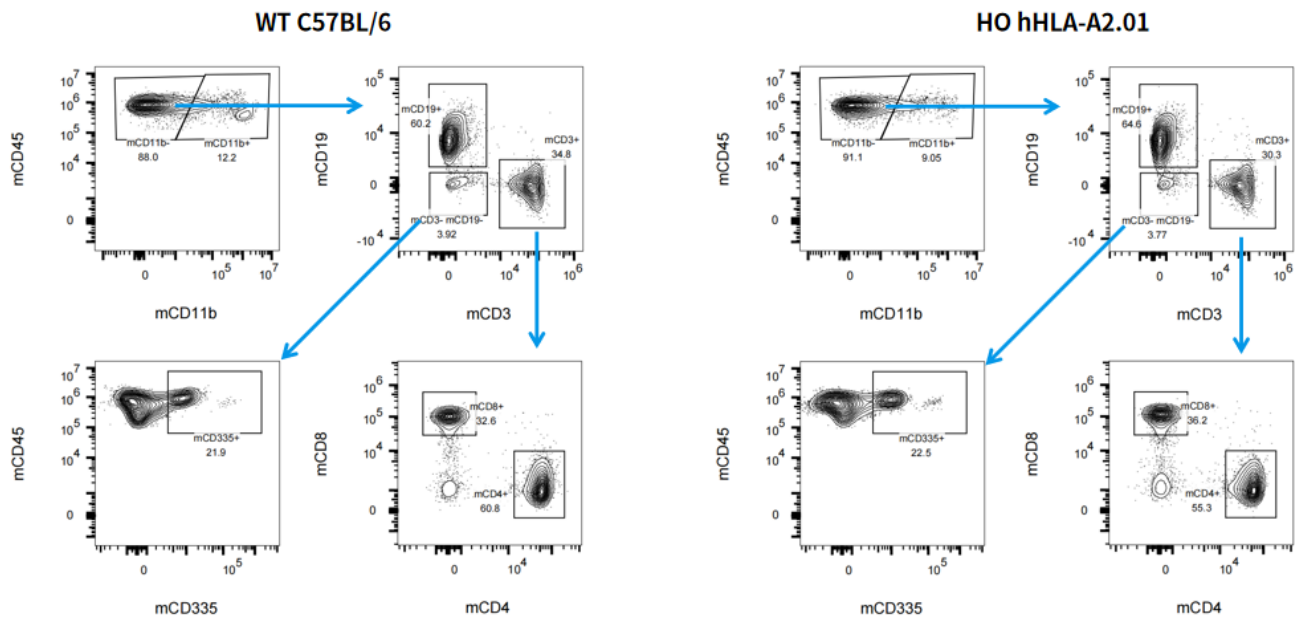


Fig.4 Analysis of leukocytes cell subpopulation in Blood (female, 6-8wks).