

# Mrgpra3-2A-GFPCre

|        |   |
|--------|---|
| 系統名    | C57BL/6Smoc- <i>Mrgpra3</i> <sup>em1(2A-GFPCre)Smoc</sup> |
| SMOC番号 | NM-KI-234359  |
| 維持形態   | Repository Live   |

## 遺伝子の概要

|                               |                       |                                    |
|-------------------------------|-----------------------|------------------------------------|
| Gene Symbol<br><b>Mrgpra3</b> | <b>Synonyms</b>       | Mrga3                              |
|                               | <b>NCBI ID</b>        | <a href="#">233222</a>             |
|                               | <b>MGI ID</b>         | <a href="#">2684085</a>            |
|                               | <b>Ensembl ID</b>     | <a href="#">ENSMUSG00000078698</a> |
|                               | <b>Human Ortholog</b> | MRGPRA3                            |

## 説明

The 2A-GFPCre expression cassette was knocked into the *Mrgpra3* gene stop codon site.

\*Literature published using this strain should indicate: *Mrgpra3*-2A-GFPCre mice (Cat. NO. NM-KI-234359) were purchased from Shanghai Model Organisms Center, Inc..

## 表現型データ

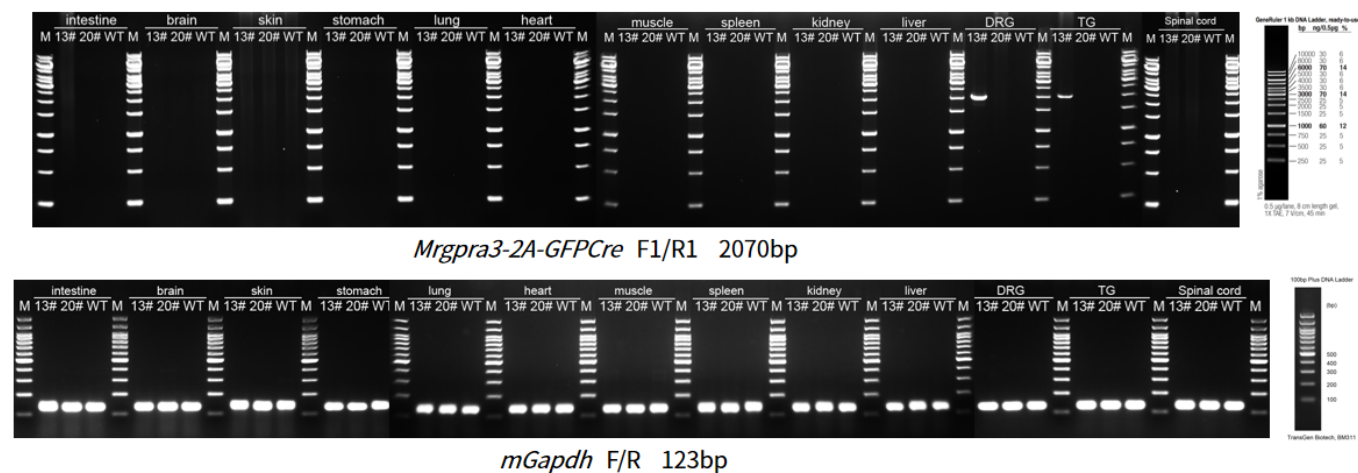


Fig.1 Detection of *Mrgpra3*-2A-GFPCre expression in DRG, TG, brain, Spinal cord, heart, liver,

spleen, lung, kidney, skin, muscle, stomach and intestine by RT-PCR.

Mrgpra3-2A-GFPCre+: one band at 2070 bp with primers F1/R1 (Mrgpra3-2A-GFPCre) in DRG and TG.

Abbr. DRG, dorsal root ganglion; TG, trigeminal ganglia; M, DNA marker; WT, wild type.

---