

# MC38-hCD39

## Strain Information

SMOC番号 NM-S13-TM83

Cell Line MC38-hCD39

維持形態 Validation of pharmacodynamic assays completed

説明 CD47 gene humanized WEHI 169 cell line

\*Literature published using this strain should indicate: MC38-hCD39 cell line (Cat. NO. NM-S13-TM83) was purchased from Shanghai Model Organisms Center, Inc..

## 表現型データ

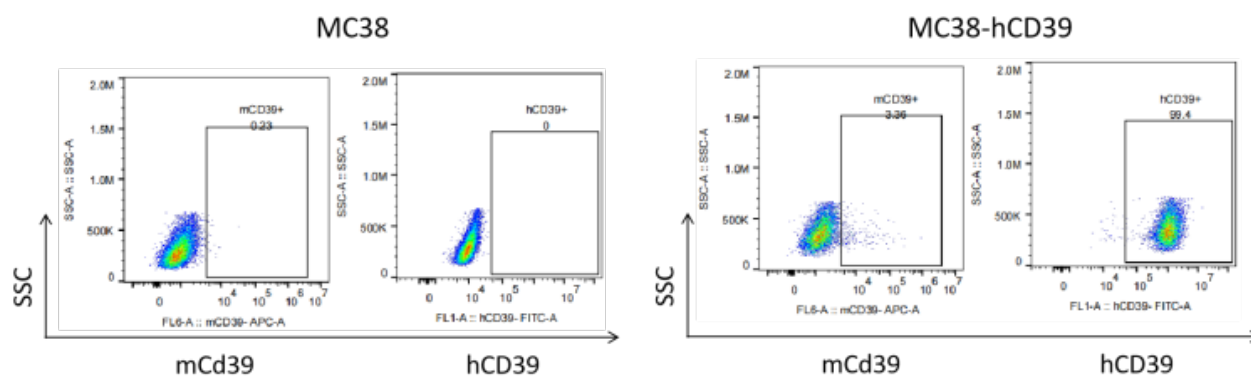


Figure 1. hCD39 expression in MC38-hCD39 cell line.

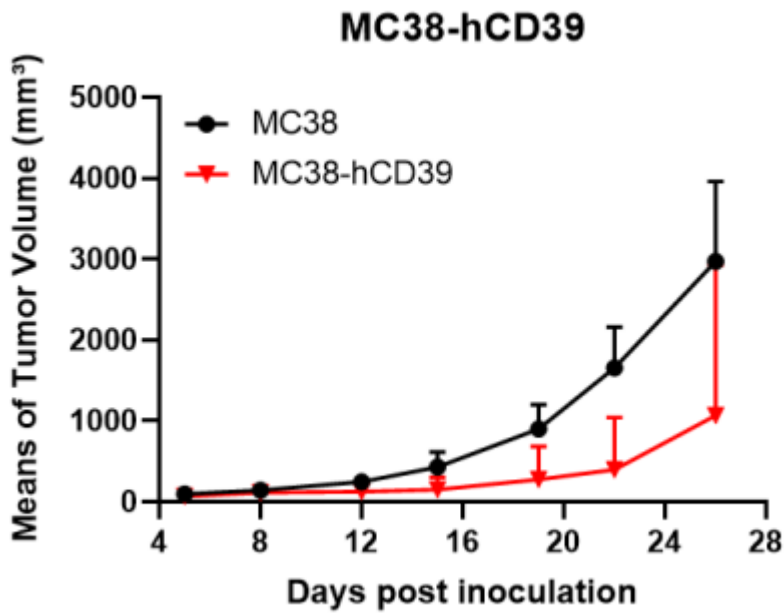


Figure 2. Tumor growth curve of MC38-hCD39 syngeneic model (n=4).

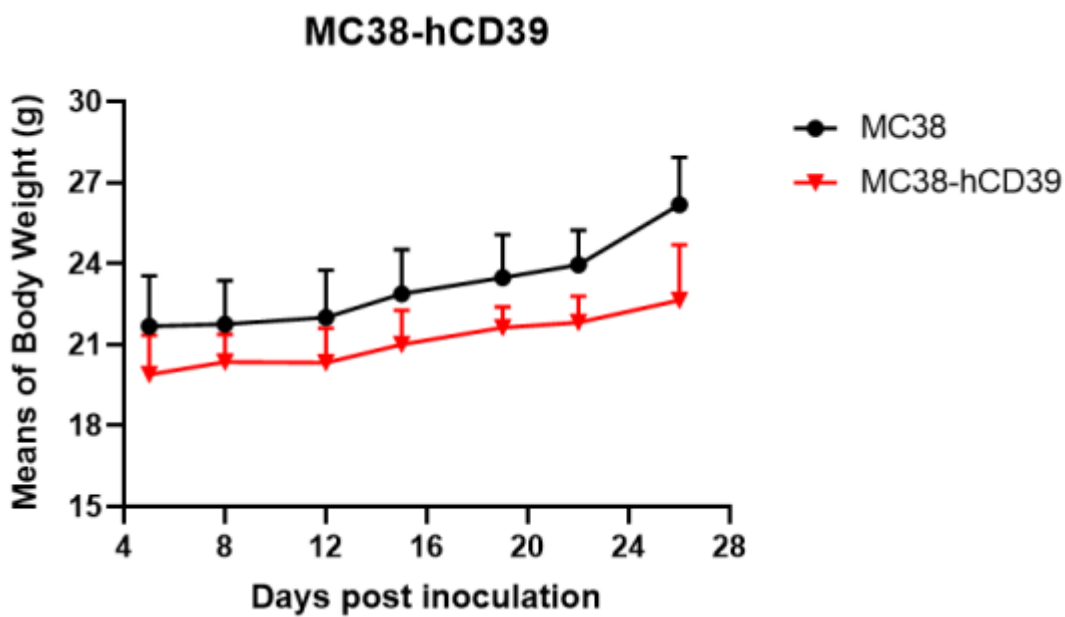


Figure 3. Body weight change of MC38-hCD39 syngeneic model (n=4).

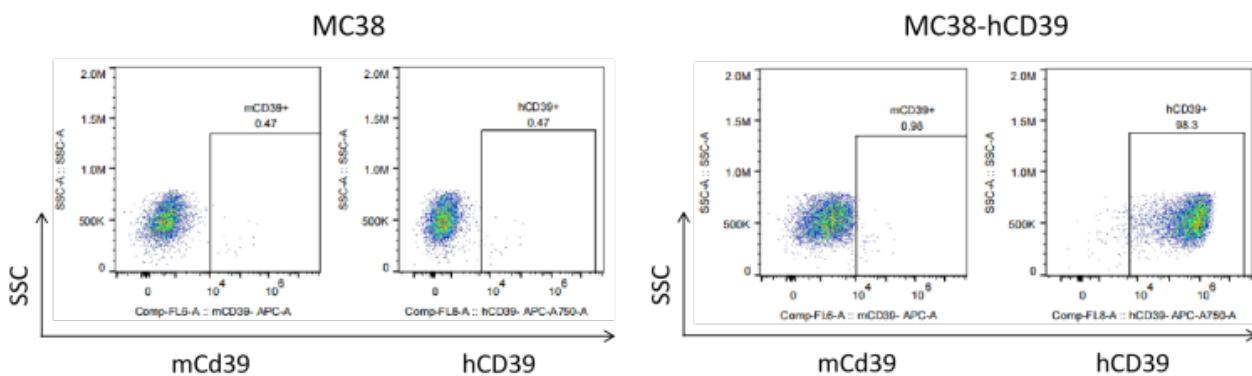


Figure 4. The expression of hCD39 in humanized modified tumors by FACS.

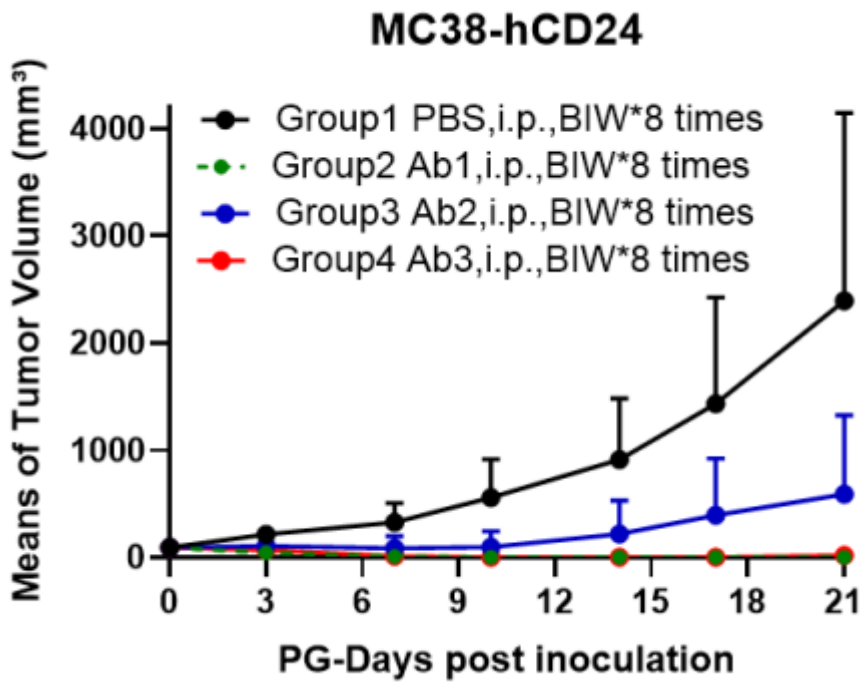


Figure 5. Antitumor activity of three different antibodies (n=6).