

# Daudi-Luc

## Strain Information

SMOC番号 NM-BL02-1

Cell Line Daudi-Luc

維持形態 Validation of tumorigenic capacity completed

説明 Luciferase-labeled Daudi-Luc cell line

\*Literature published using this strain should indicate: Daudi-Luc cell line (Cat. NO. NM-BL02-1) was purchased from Shanghai Model Organisms Center, Inc..

## 表現型データ

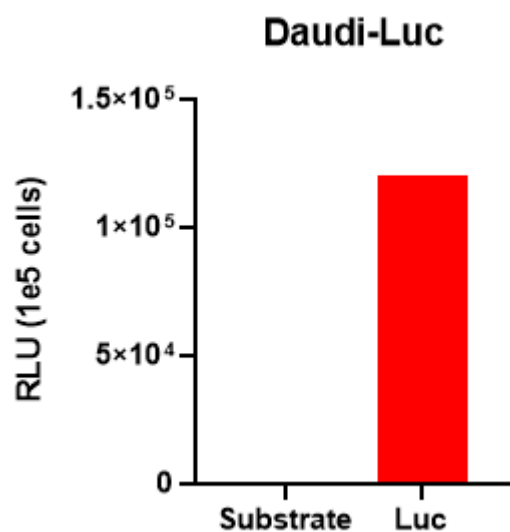


Fig1. Luciferase activity assay of Daudi-Luc cell line

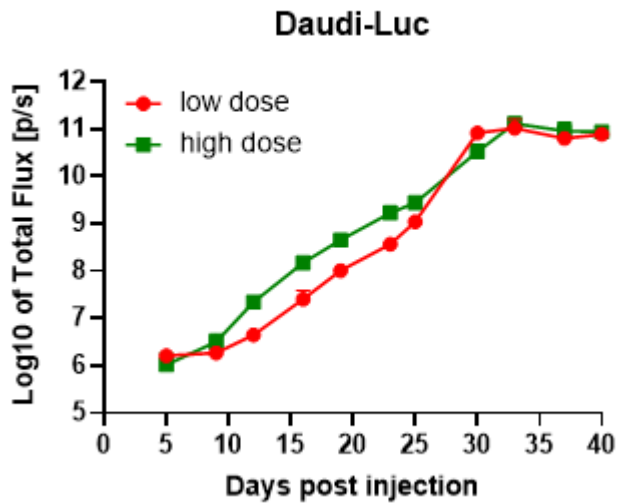


Fig2. Signal increase curve in Daudi-Luc xenograft model (n=5)

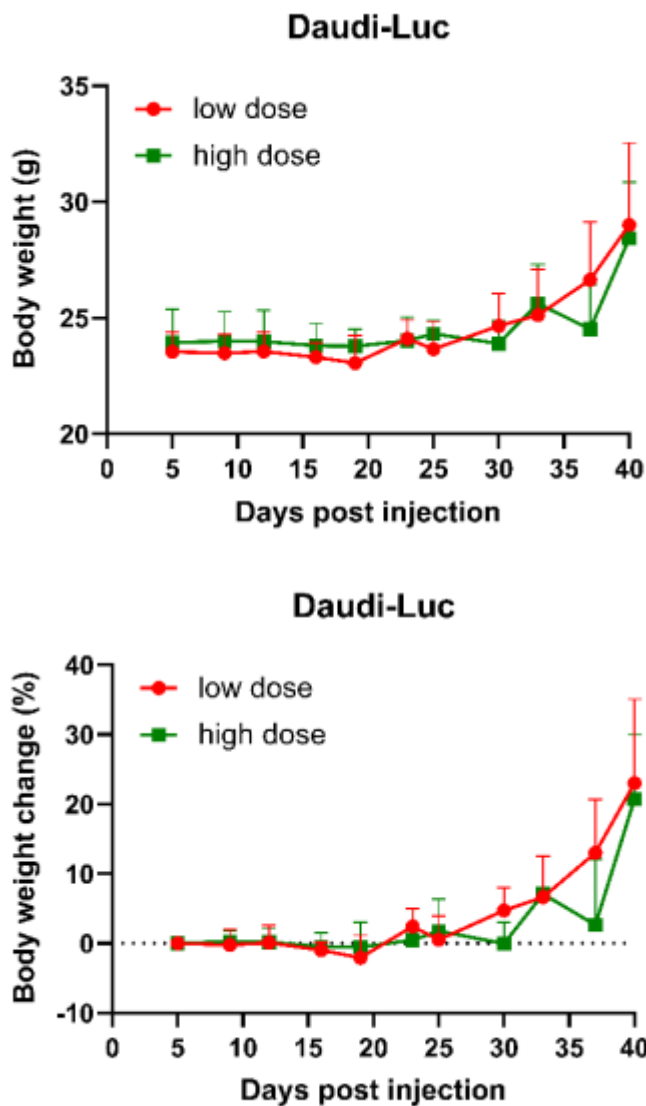


Fig3. Body weight change of Daudi-Luc xenograft model (n=5)

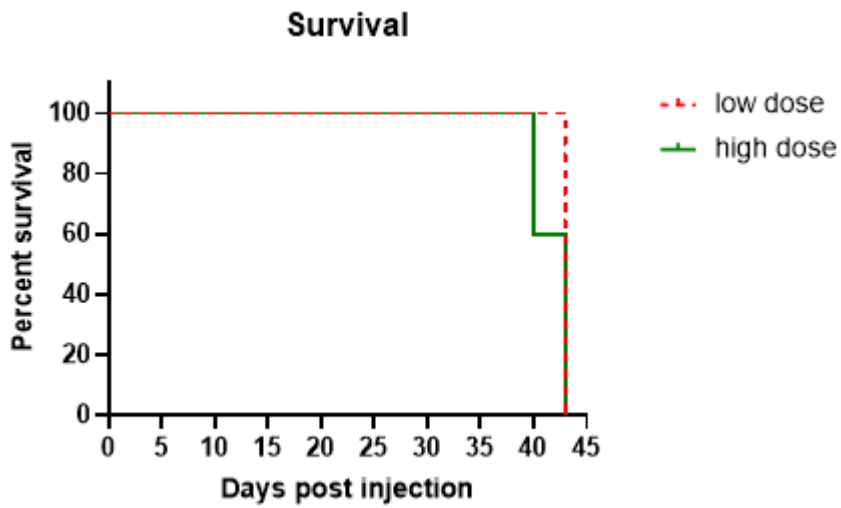


Fig4. Survival curve of Daudi-Luc xenograft mouse model (n=5)

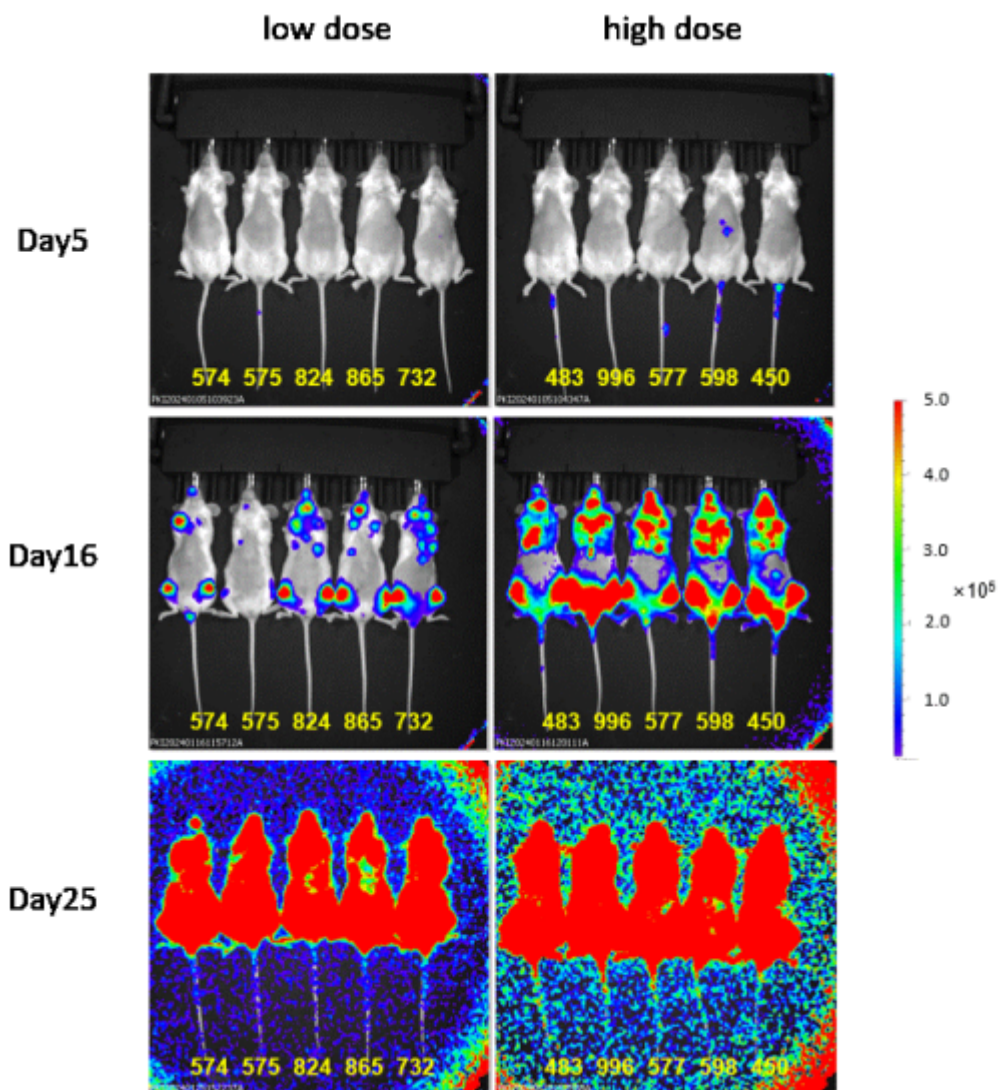


Fig5. Bioluminescence imaging of Daudi-Luc xenograft mouse model

