

Trp53-KO/Kras-G12D

Strain Information

| | |
|-----------|---|
| SMOC番号 | NM-YD08 |
| Cell Line | Trp53-KO/Kras-G12D |
| 維持形態 | Validation of tumorigenic capacity completed |
| 説明 | <p>Trp53-KO/Kras-G12D cell line is murine cell derived from lung cancer model of the offspring produced by mating Trp53-Flox mice (NM-CKO-18005) and Kras-LSL-G12D mice (NM-KI-190003).</p> <p>*Literature published using this strain should indicate: Trp53-KO/Kras-G12D cell line (Cat. NO. NM-YD08) was purchased from Shanghai Model Organisms Center, Inc..</p> |

表現型データ

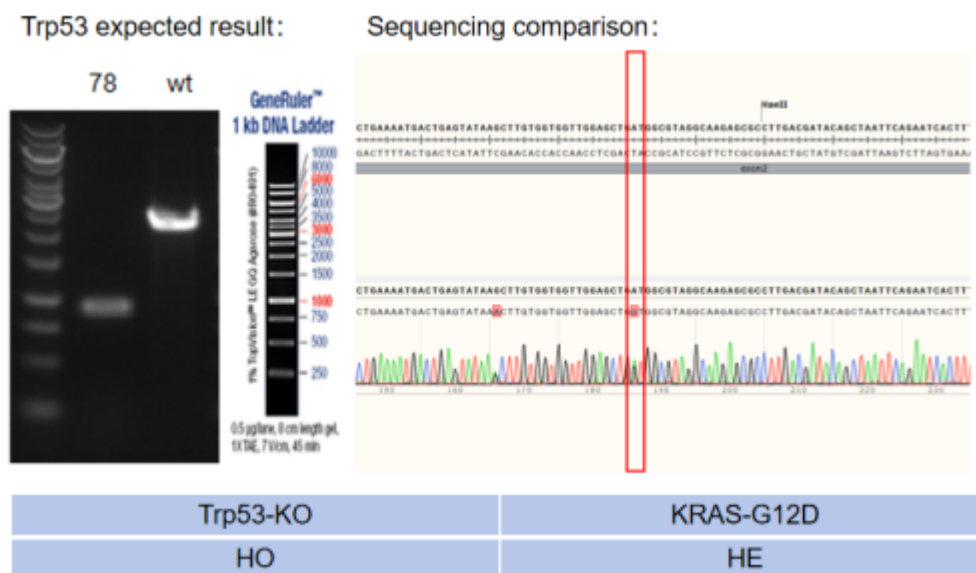


Fig1. Genotype identification of Trp53-KO/Kras-G12D cell line

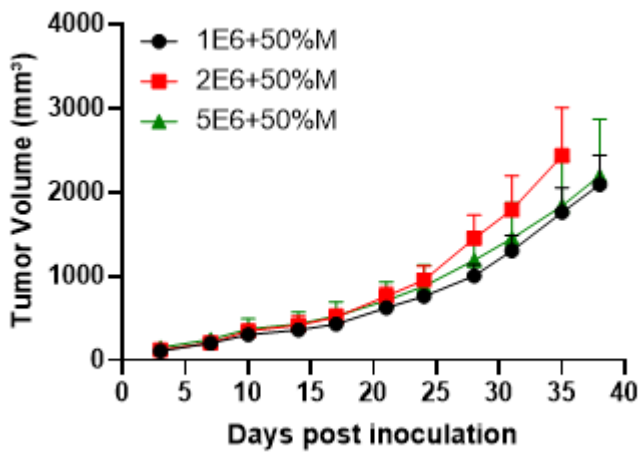


Fig2. Tumor growth curve in Trp53-KO/Kras-G12D syngeneic model (n=10)

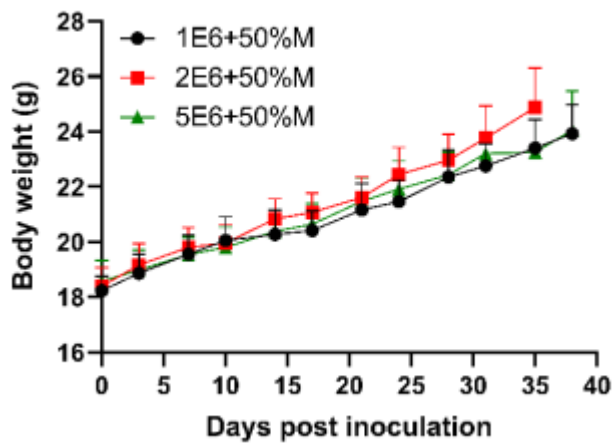
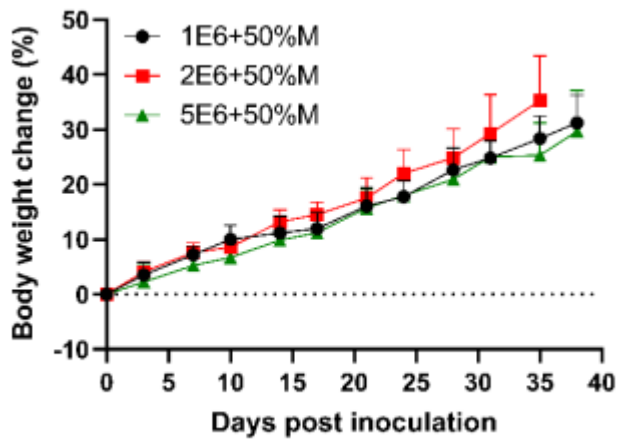


Fig3. Body weight change of Trp53-KO/Kras-G12D syngeneic model (n=10)