

Nphs2-CreERT2

系統名	C57BL/6Smoc- <i>Nphs2</i> ^{tm1(IRES-CreERT2)Smoc}
SMOC番号	NM-KI-00128
維持形態	Embryo cryopreservation

遺伝子の概要

Gene Symbol Nphs2	Synonyms	PDCN; SRN1
	NCBI ID	170484
	MGI ID	2157018
	Ensembl ID	ENSMUSG00000026602
	Human Ortholog	NPHS2

説明

An IRES-CreERT2 co-expression cassette is inserted into 3'UTR region of *Nphs2* gene via homologous recombination to establish a tamoxifen inducible *Nphs2*-CreERT2 tool stain.

*Literature published using this strain should indicate: *Nphs2*-CreERT2 mice (Cat. NO. NM-KI-00128) were purchased from Shanghai Model Organisms Center, Inc..

表現型データ

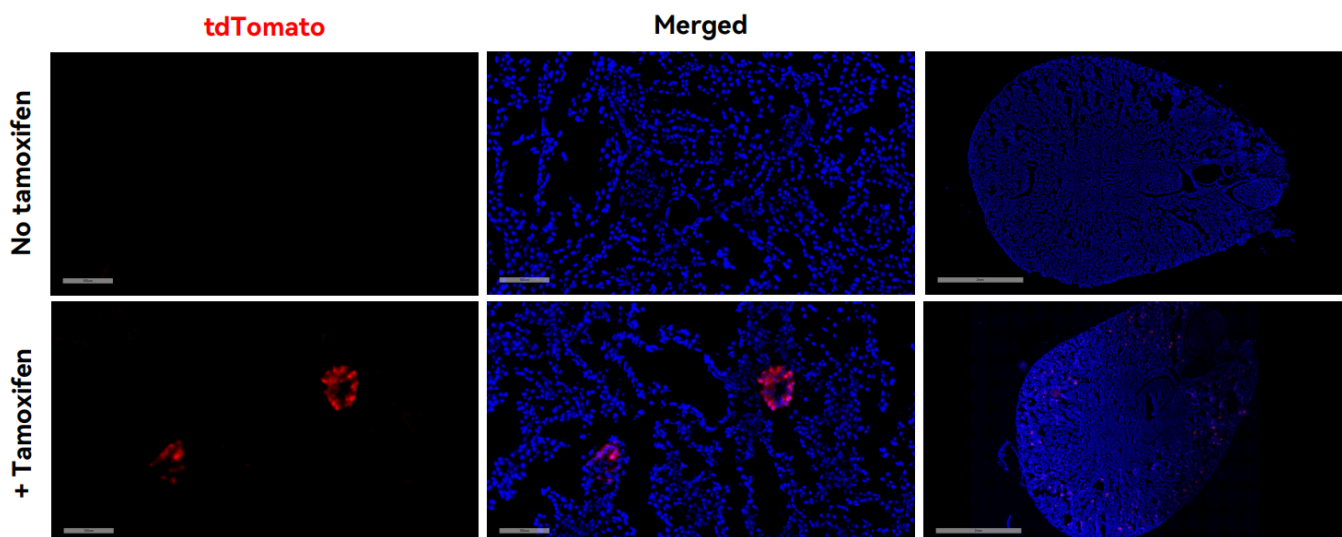


Fig1. CreERT2-mediated recombination in Corneal stromal of $Nphs2^{CreERT2/+}$; $Rosa26^{tdTomato/+}$ mouse.

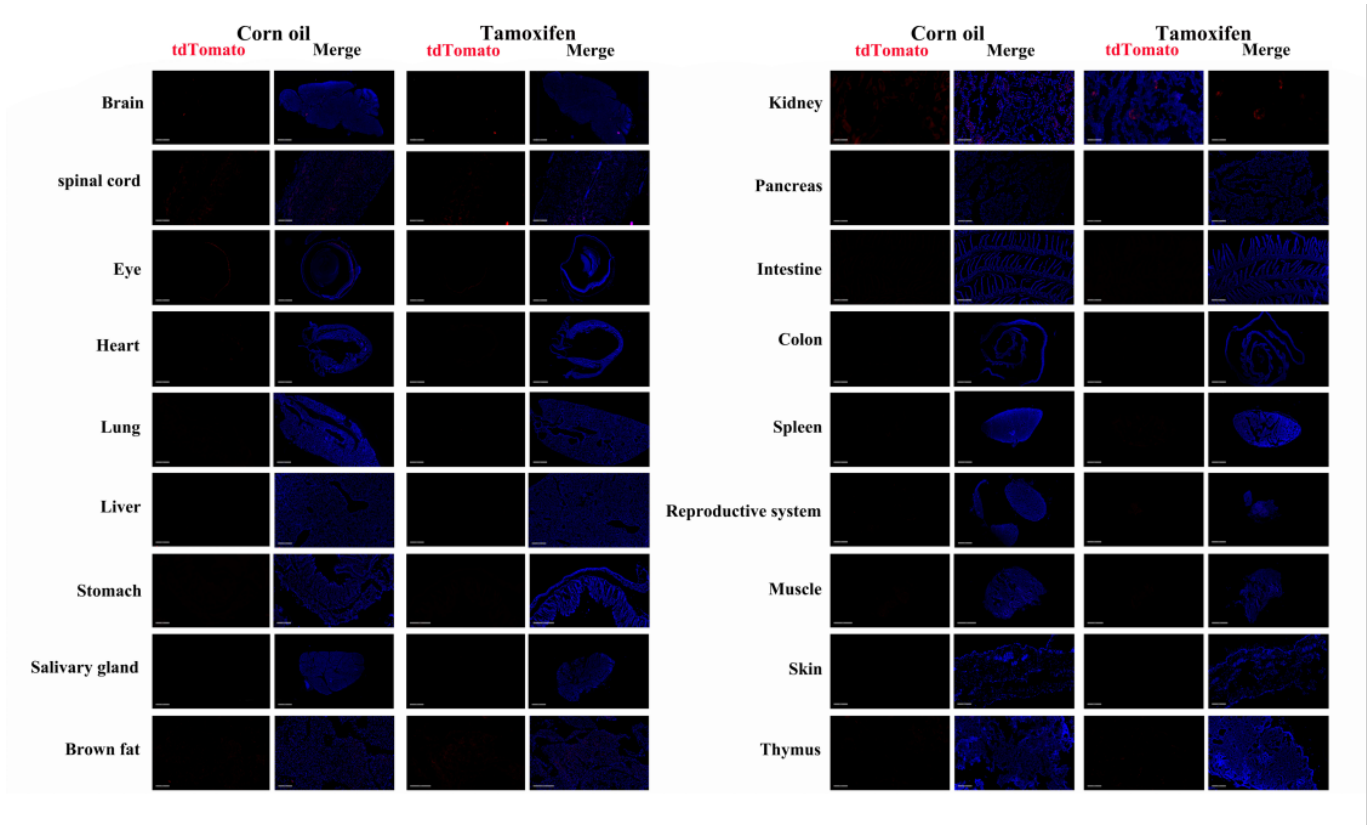


Fig2. Detection of tdTomato (red) in various tissues of $Nphs2^{CreERT2/+}$; $Rosa26^{tdTomato/+}$ mice. (For more detailed information please contact our technical advisor.)