

Drd1-2A-CreERT2

系統名	C57BL/6Smoc- <i>Drd1</i> ^{em1(2A-CreERT2-WPRE-pA)Smoc}
SMOC番号	NM-KI-18016
維持形態	Repository Live

遺伝子の概要

Gene Symbol Drd1	Synonyms	Drd-1; Drd1a; Gpcr15; C030036C15Rik
	NCBI ID	13488
	MGI ID	99578
	Ensembl ID	ENSMUSG00000021478
	Human Ortholog	DRD1

説明

A 2A-CreERT2-WPRE-pA coexpression cassette is inserted before the stop codon of mouse *Drd1* gene via homologous recombination to establish a tamoxifen inducible *Drd1*-CreERT2 tool strain. This strain can be used to knockout target gene in *Drd1*+ cells after tamoxifen treatment when crossed with mice which carry loxp sites flanking target gene.

応用分野: Cre recombinase tool

*Literature published using this strain should indicate: *Drd1*-2A-CreERT2 mice (Cat. NO. NM-KI-18016) were purchased from Shanghai Model Organisms Center, Inc..

表現型データ

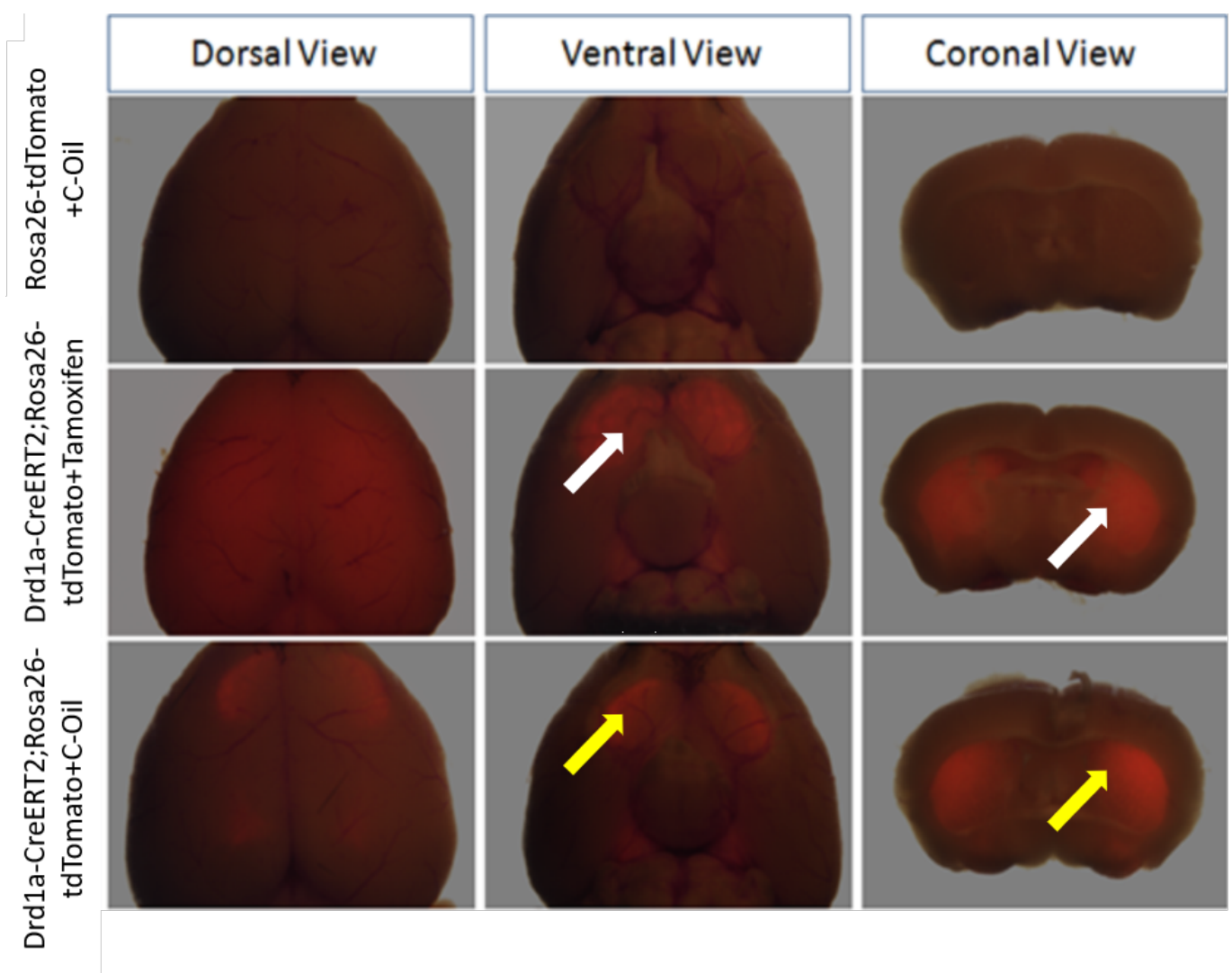


Figure 1: CreERT2-mediated recombination in brain of Drd1a CreERT2; R26 tdTomato mice. Detection of tdTomato (red) in brain of Drd1a CreERT2; R26 tdTomato mice.

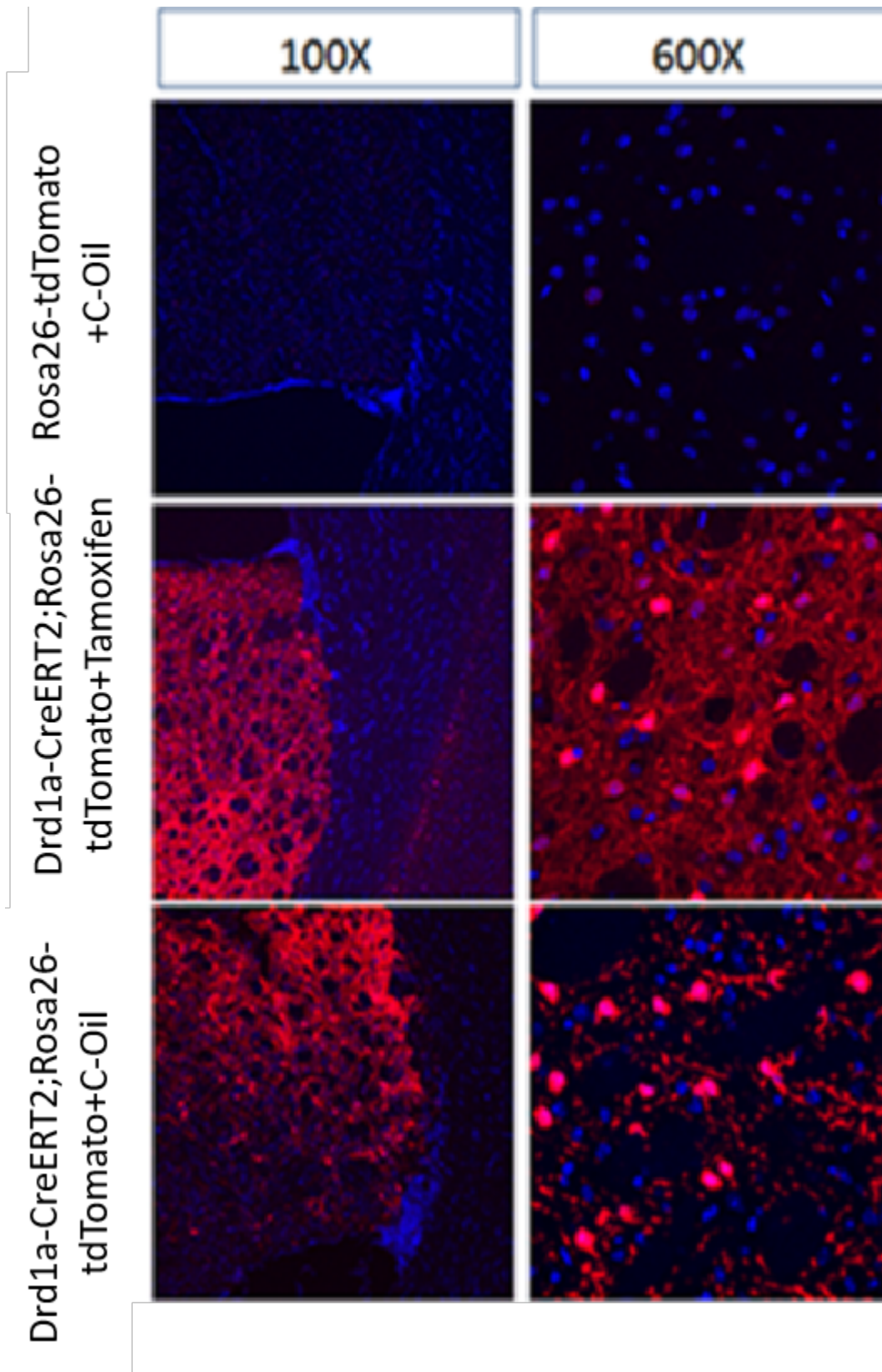


Figure 2: CreERT2-mediated recombination in CPU(corpus striatum) of Drd1a CreERT2; R26 tdTomato mice. Detection of tdTomato (red) in CPU of Drd1a CreERT2; R26 tdTomato mice.