

Cd2-2A-CreERT2

系統名	C57BL/6Smoc- <i>Cd2</i> ^{em1(2A-CreERT2-WPRE-pA)Smoc}
SMOC番号	NM-KI-18017
維持形態	Repository Live

遺伝子の概要

Gene Symbol Cd2	Synonyms	Ly37; LFA-2; Ly-37
	NCBI ID	12481
	MGI ID	88320
	Ensembl ID	ENSMUSG00000027863
	Human Ortholog	CD2

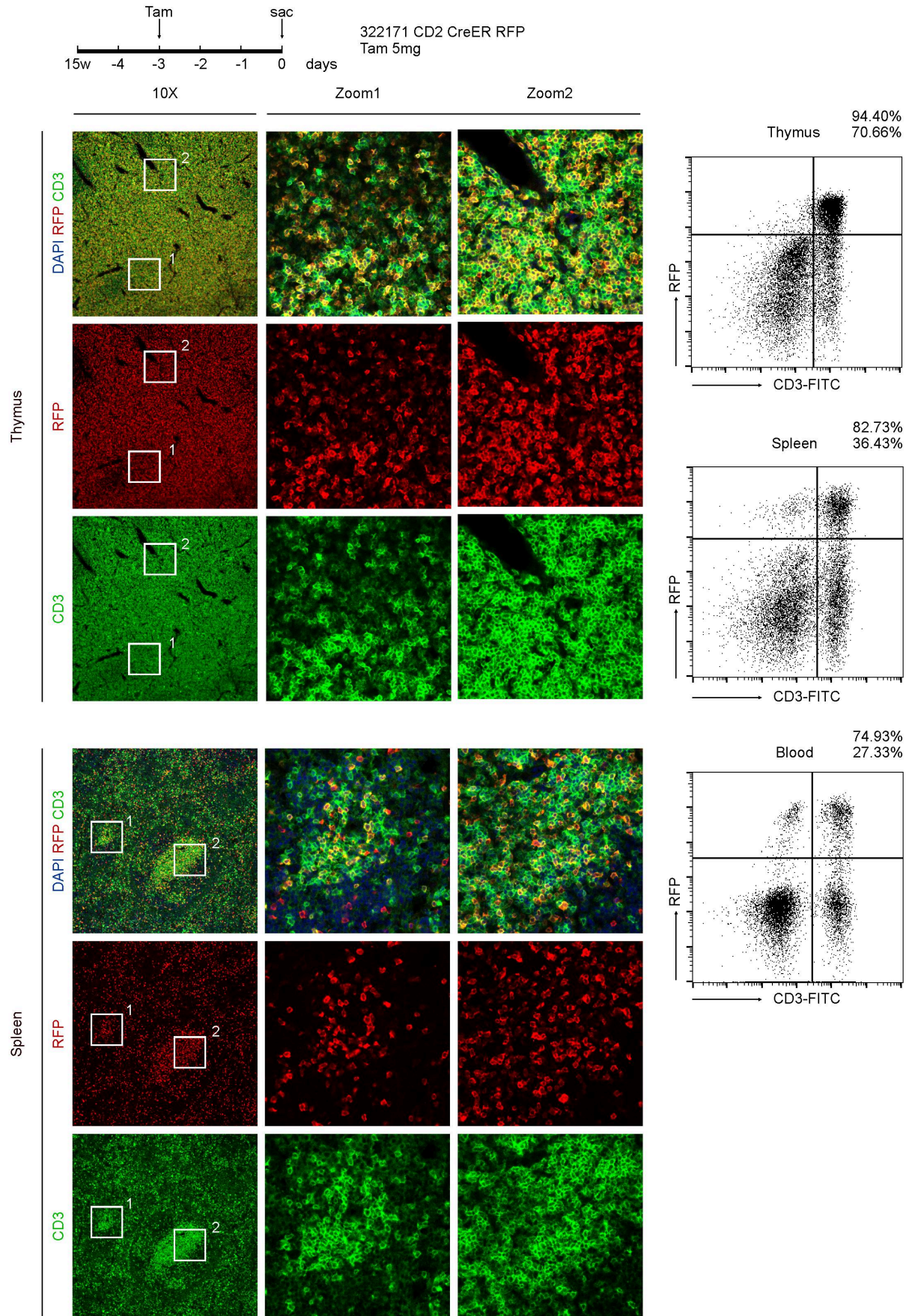
説明

A 2A-CreERT2-WPRE-pA coexpression cassette is inserted before the stop codon of mouse Cd2 gene via homologous recombination to establish a tamoxifen inducible Cd2-CreERT2 tool strain. This strain can be used to knockout target gene in T cells and B cells after tamoxifen treatment when crossed with mice which carry loxp sites flanking target gene.

応用分野: Cre recombinase tool

*Literature published using this strain should indicate: Cd2-2A-CreERT2 mice (Cat. NO. NM-KI-18017) were purchased from Shanghai Model Organisms Center, Inc..

表現型データ



The result shows that expression pattern of RFP in T cells of Cd2-(2A-CreERT2-WPRE-pA);RFP.
