

Lyz2-2A-CreERT2

| | |
|--------|---|
| 系統名 | C57BL/6Smoc- <i>Lyz2</i> ^{em1(2A-CreERT2-WPRE-pA)Smoc} |
| SMOC番号 | NM-KI-18018 |
| 維持形態 | Repository Live |

遺伝子の概要

| | | |
|----------------------------|-----------------------|---|
| Gene Symbol Lyz2 | Synonyms | Lys; Lzm; Lzp; Lysm; Lyzs; Lyzf2; Lzm-s1; AI326280 |
| | NCBI ID | 17105 |
| | MGI ID | 96897 |
| | Ensembl ID | ENSMUSG00000069516 |
| | Human Ortholog | LYZ2 |

説明

A 2A-CreERT2-WPRE-pA coexpression cassette is inserted before the stop codon of mouse *Lyz2* gene via homologous recombination to establish a tamoxifen inducible *Lyz2*-CreERT2 tool strain. This strain can be used to knockout target gene in *Lyz2*⁺ cells after tamoxifen treatment when crossed with mice which carry loxp sites flanking target gene.

応用分野: Cre recombinase tool

*Literature published using this strain should indicate: *Lyz2*-2A-CreERT2 mice (Cat. NO. NM-KI-18018) were purchased from Shanghai Model Organisms Center, Inc..

表現型データ

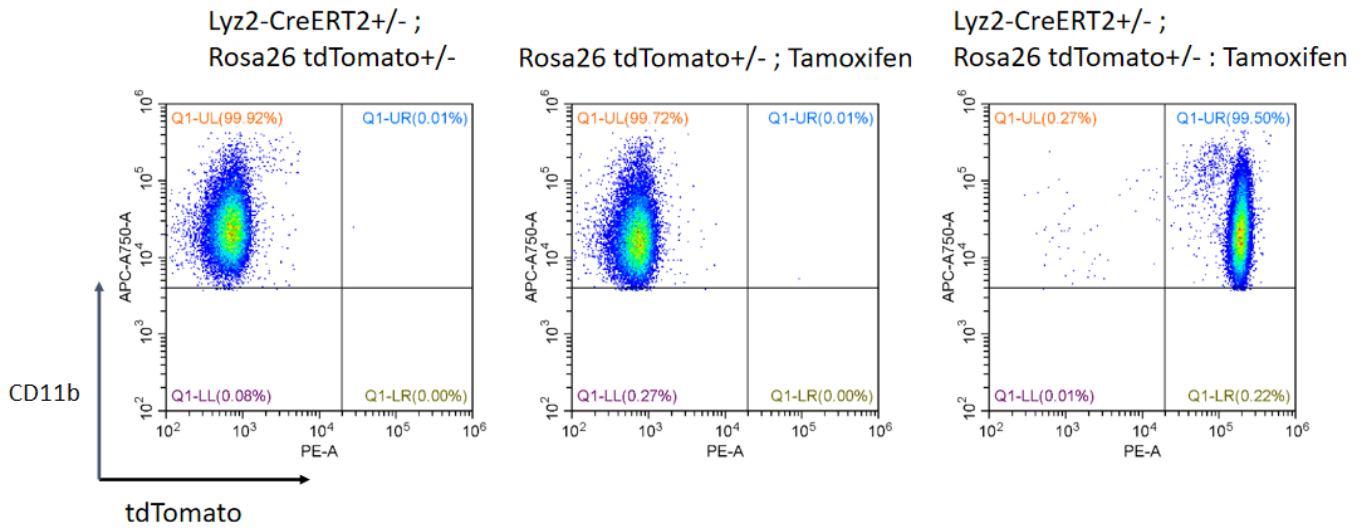


Fig1 Evaluation of CreERT2 recombination in Lyz2 Cre+/-;R26 tdT+/- mice.