

Sftpc-IRES-CreERT2

系統名	C57BL/6Smoc- <i>Sftpc</i> ^{em(IRES-CreERT2)Smoc}
SMOC番号	NM-KI-18020
維持形態	Repository Live

遺伝子の概要

Gene Symbol <i>Sftpc</i>	Synonyms	SP5; SPC; SP-C; Sftp2; Bricd6; Sftp-2; pro-SpC
	NCBI ID	20389
	MGI ID	109517
	Ensembl ID	ENSMUSG00000022097
	Human Ortholog	SFTPC

説明

An IRES-CreERT2 co-expression cassette is inserted into 3'UTR region of *Sftpc* gene via homologous recombination to establish a tamoxifen inducible *Sftpc*-CreERT2 tool strain. *This strain CreERT2 has leakage (see validation data for details), please select according to the purpose of the study.

応用分野: Cre recombinase tool

*Literature published using this strain should indicate: *Sftpc*-IRES-CreERT2 mice (Cat. NO. NM-KI-18020) were purchased from Shanghai Model Organisms Center, Inc..

表現型データ

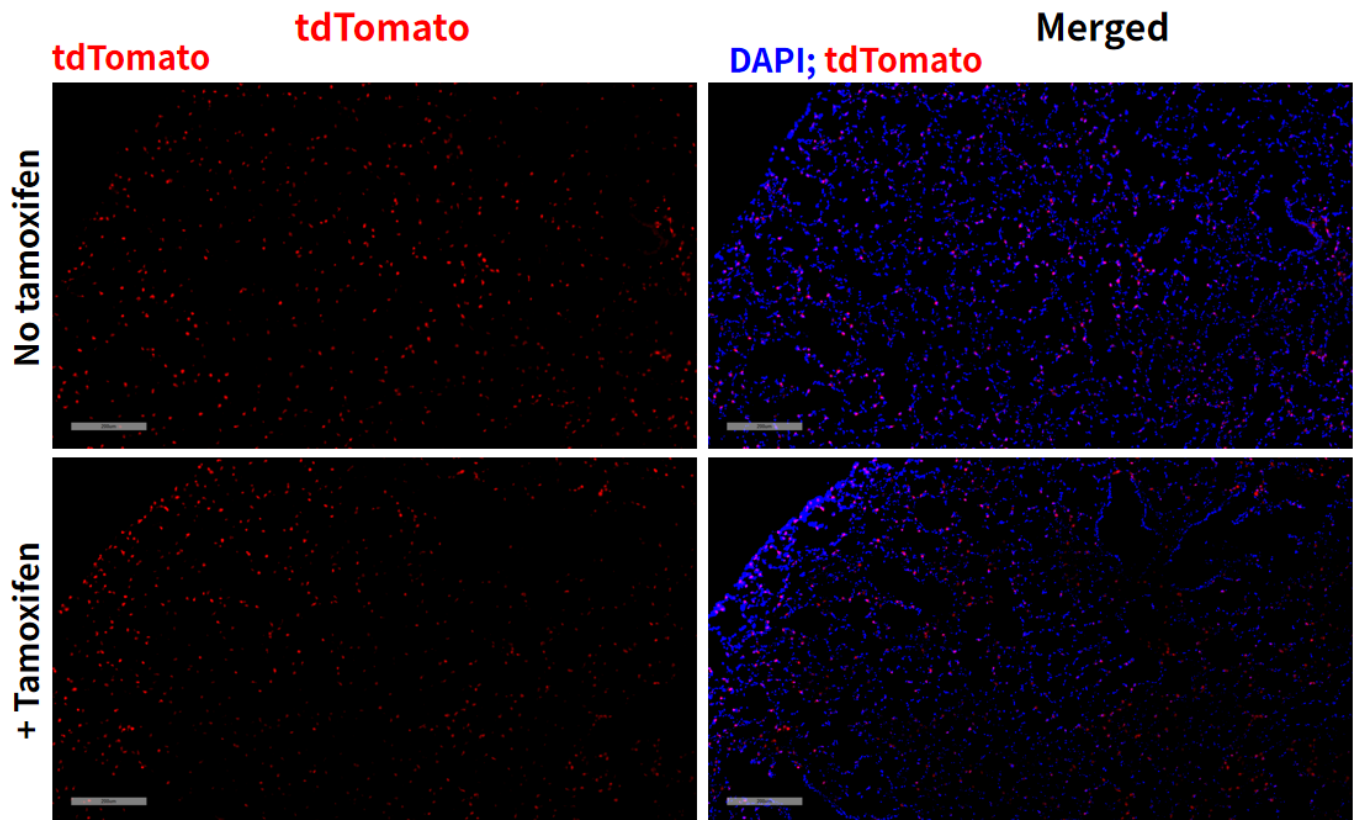


Fig1. Cre mediated recombination in lung of *Sftpc^{CreERT2/+};Rosa26^{tdTomato/+}* mouse.

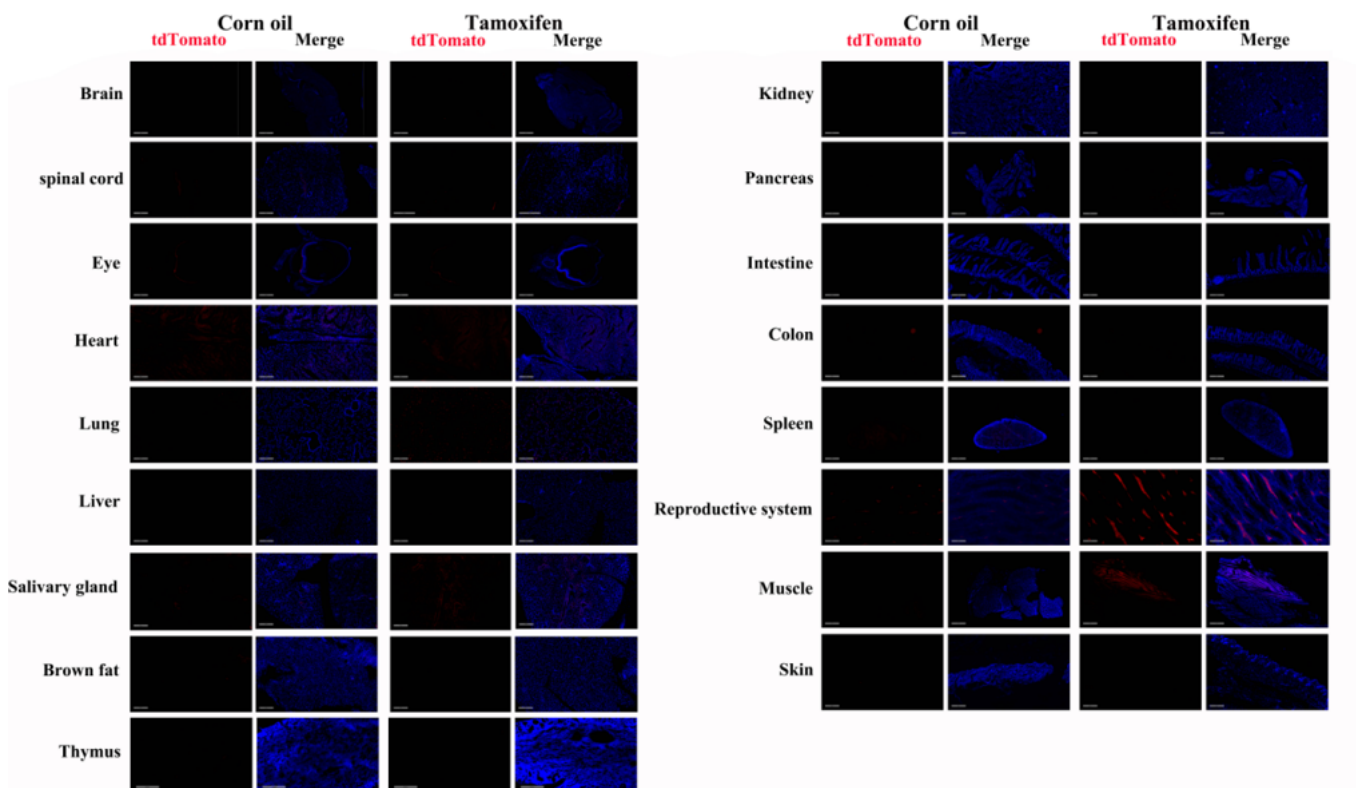


Fig2. Detection of tdTomato(red) in various tissues of *Sftpc^{CreERT2/+};Rosa26^{tdTomato/+}* mouse. Expression tissues include: lung epithelial cells, testis interstitial cells, salivary glands, muscles. Tissues that unexpressed include brain, spinal cord,

retina, heart, liver, brown fat, thymus, kidney, pancreas, large and small intestine, spleen, and skin.(2-months old, male) (For more detailed information please contact our technical advisor.)
