

Tert-CreERT2-2A-EGFP

| | |
|--------|---|
| 系統名 | C57BL/6Smoc- <i>Tert</i> ^{em1(CreERT2-2A-GFP-WPRE-PA)Smoc} |
| SMOC番号 | NM-KI-18037 |
| 維持形態 | Embryo cryopreservation |

遺伝子の概要

| | | |
|---------------------|----------------|------------------------------------|
| Gene Symbol Tert | Synonyms | TR; TP2; TRT; EST2; TCS1 |
| | NCBI ID | 21752 |
| | MGI ID | 1202709 |
| | Ensembl ID | ENSMUSG00000021611 |
| | Human Ortholog | TERT |

説明

A CreERT2-2A-GFP-WPRE-PA expression cassette was knocked into the Tert gene start codon site by homologous recombination.

応用分野: Cre recombinase tool

*Literature published using this strain should indicate: Tert-CreERT2-2A-EGFP mice (Cat. NO. NM-KI-18037) were purchased from Shanghai Model Organisms Center, Inc..

表現型データ

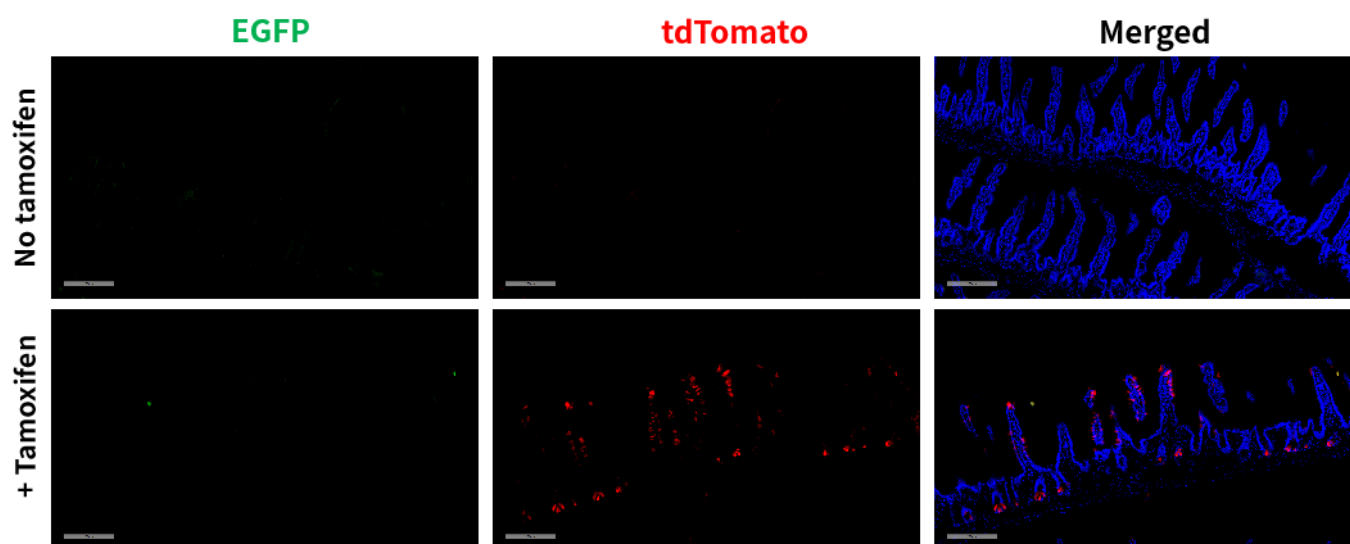


Fig1. CreERT2 mediated recombination in small intestine of TertCreERT2-EGFP/+;Rosa26tdTomato/+ mouse.

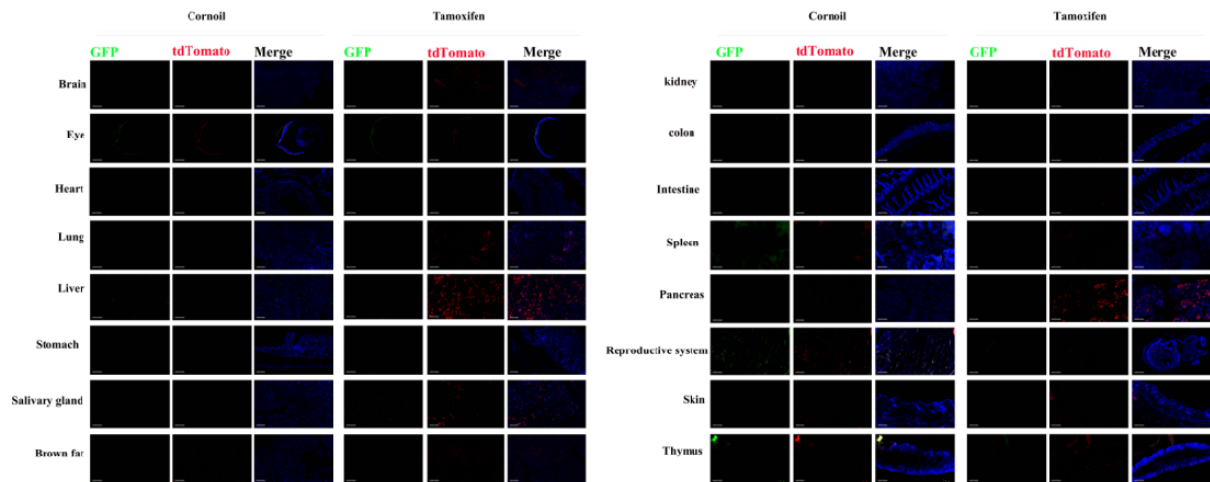


Fig2. Detection of EGFP(green) and tdTomato(red) in various tissues of TertCreERT2-EGFP/+;Rosa26tdTomato/+ mouse. Expression tissues include: small intestine, lung, liver, salivary gland, kidney, pancreas. A few cells expressed in brain, stomach, colon, spleen, skin, thymus, ovary. Tissues that unexpressed include eye, heart, brown fat. No significant EGFP positive signal was detected. (6.5-months old, female) (For more detailed information please contact our technical advisor.)