

# Krt14-CreERT2

系統名	C57BL/6Smoc- <i>Krt14</i> <sup>em2(CreERT2-Wpre-polyA)Smoc</sup>
SMOC番号	NM-KI-190024
維持形態	Repository Live

## 遺伝子の概要

Gene Symbol Krt14	Synonyms	K14; CK-14; Krt1-14; AI626930; Krt-1.14
	NCBI ID	<a href="#">16664</a>
	MGI ID	<a href="#">96688</a>
	Ensembl ID	<a href="#">ENSMUSG00000045545</a>
	Human Ortholog	KRT14

## 説明

A CreERT2-Wpre-polyA expression cassette was knocked into initiation codon ATG site of the Krt14 gene.

**応用分野:** Cre recombinase tool

\*Literature published using this strain should indicate: Krt14-CreERT2 mice (Cat. NO. NM-KI-190024) were purchased from Shanghai Model Organisms Center, Inc..

## 表現型データ

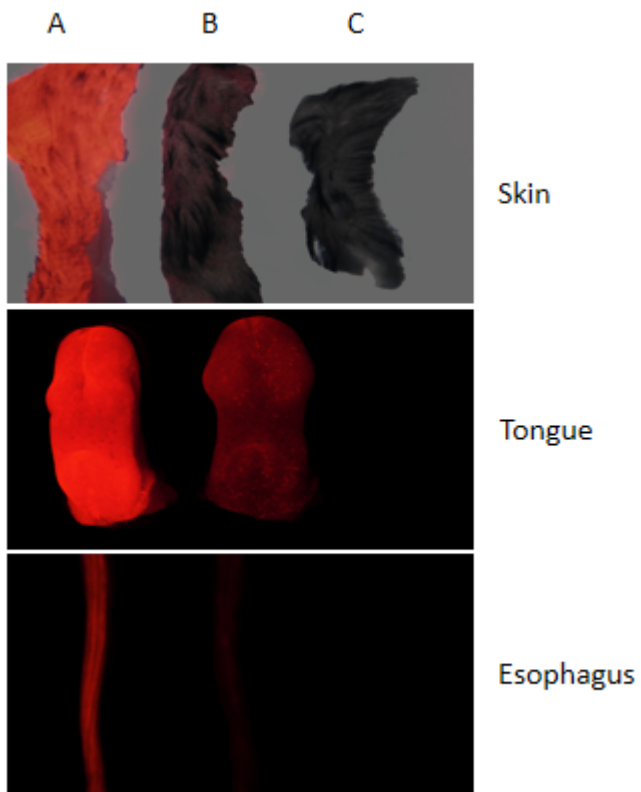


Fig1 CreERT2-mediated recombination in Skin, Tongue & Esophagus of Krt14 CreERT2<sup>+/-</sup>;R26 tdTomato<sup>+/-</sup> mice.

A, Krt14-CreERT2<sup>+/-</sup> ; Rosa26 tdTomato<sup>+/-</sup> ; Tamoxifen

B, Krt14-CreERT2<sup>+/-</sup>; Rosa26 tdTomato<sup>+/-</sup>

C, Rosa26 tdTomato<sup>+/-</sup>

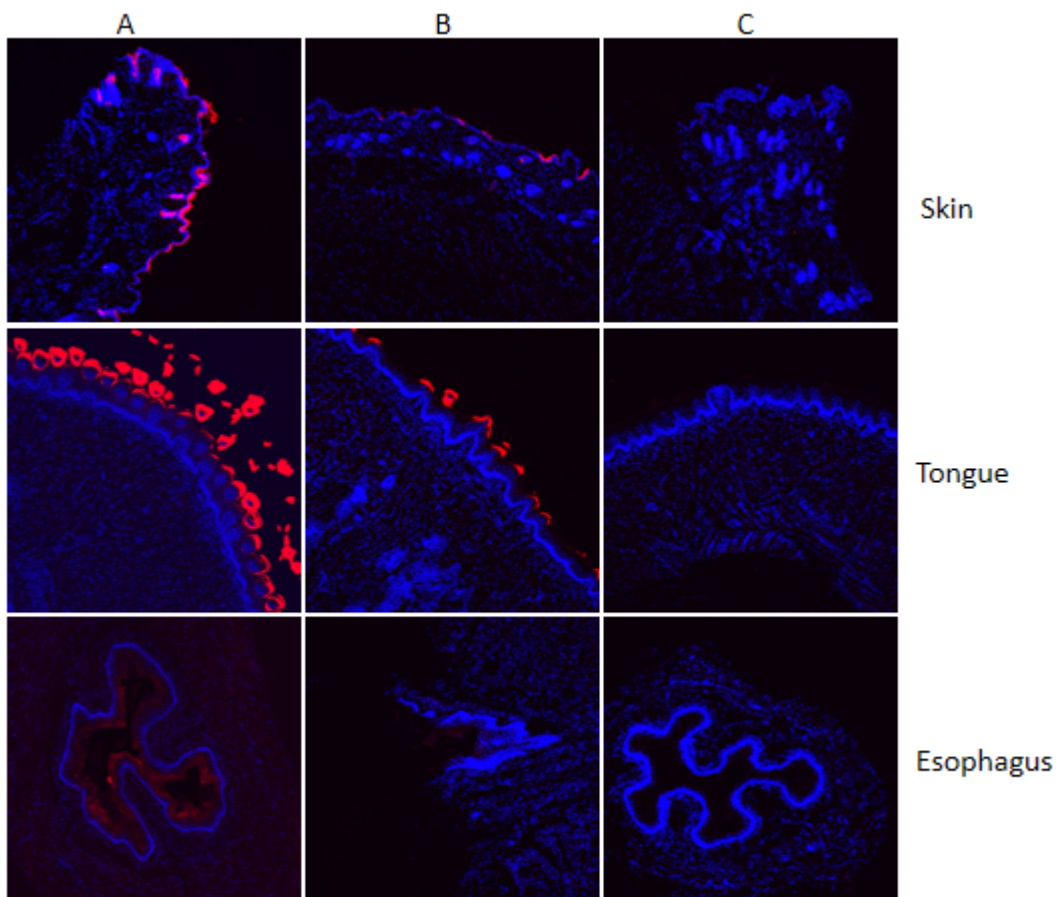


Fig2 Confocal images showing expression of tdTomato in Skin, Tongue & Esophagus of Krt14 CreERT2<sup>+/-</sup>;R26 tdTomato <sup>+/-</sup> mice.

A, Krt14-CreERT2<sup>+/-</sup> ; Rosa26 tdTomato<sup>+/-</sup> ; Tamoxifen

B, Krt14-CreERT2<sup>+/-</sup>; Rosa26 tdTomato<sup>+/-</sup>

C, Rosa26 tdTomato<sup>+/-</sup>

## 出版物

[A novel lineage of osteoprogenitor cells with dual epithelial and mesenchymal properties govern maxillofacial bone homeostasis and regeneration after MSFL](#)

References: Cell Research