

# Adgre1-2A-CreERT2

系統名	C57BL/6Smoc- <i>Adgre1</i> <sup>em1(2A-CreERT2)Smoc</sup>
SMOC番号	NM-KI-190025
維持形態	Sperm cryopreservation

## 遺伝子の概要

Gene Symbol Adgre1	<b>Synonyms</b>	Emr1; Ly71; F4/80; Gpf480; TM7LN3; DD7A5-7; EGF-TM7
	<b>NCBI ID</b>	<a href="#">13733</a>
	<b>MGI ID</b>	<a href="#">106912</a>
	<b>Ensembl ID</b>	<a href="#">ENSMUSG00000004730</a>
	<b>Human Ortholog</b>	ADGRE1

## 説明

A 2A-CreERT2 expression cassette was knocked into the *Adgre1* gene stop codon site.

**応用分野:** Cre recombinase tool

\*Literature published using this strain should indicate: *Adgre1-2A-CreERT2* mice (Cat. NO. NM-KI-190025) were purchased from Shanghai Model Organisms Center, Inc..

## 表現型データ

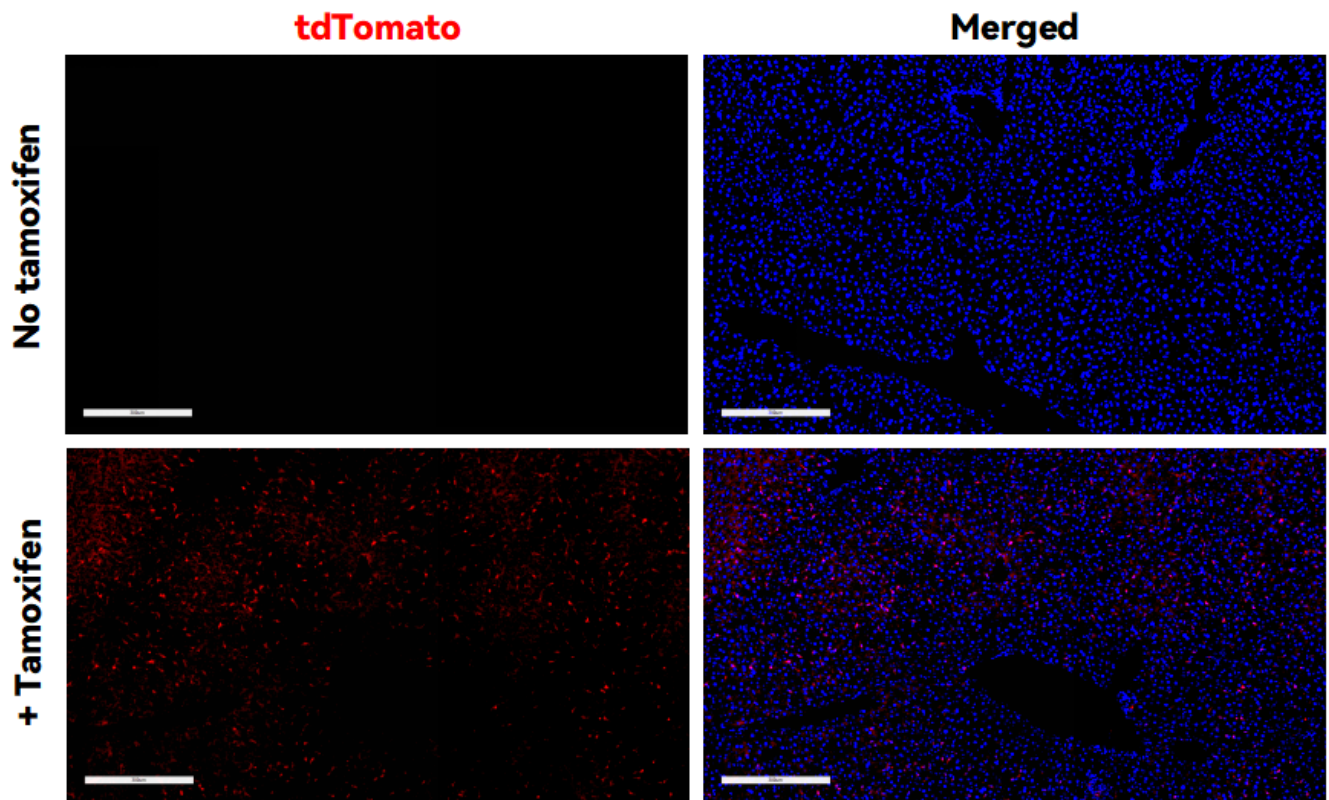


Fig1. CreERT2-mediated recombination in liver of  $Adgre1^{CreERT2/+};Rosa26^{tdTomato/+}$  mouse.

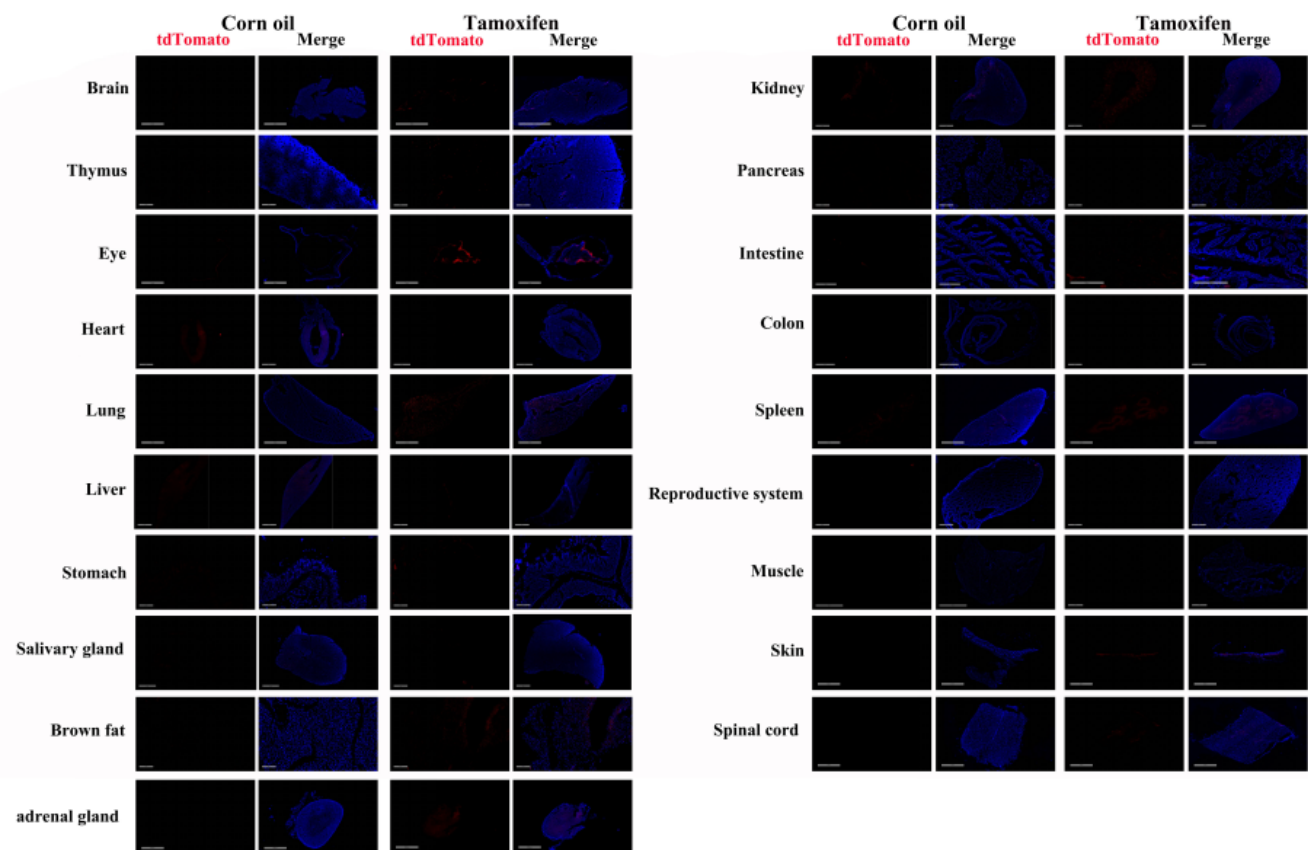


Fig2. Detection of tdTomato(red) in various tissues of  $Adgre1^{CreERT2/+};Rosa26^{tdTomato/+}$  mice. (For

more detailed information please contact our technical advisor.)

---