

Ncr1-2A-Cre

系統名	C57BL/6Smoc- <i>Ncr1</i> ^{em2(2A-iCre)Smoc}
SMOC番号	NM-KI-190027
維持形態	Repository Live

遺伝子の概要

Gene Symbol Ncr1	Synonyms	Ly94; NKp46
	NCBI ID	17086
	MGI ID	1336212
	Ensembl ID	ENSMUSG00000062524
	Human Ortholog	NCR1

説明

A 2A-iCre expression cassette was knocked into the *Ncr1* gene stop codon site.

応用分野: Cre recombinase tool

*Literature published using this strain should indicate: *Ncr1*-2A-Cre mice (Cat. NO. NM-KI-190027) were purchased from Shanghai Model Organisms Center, Inc..

表現型データ

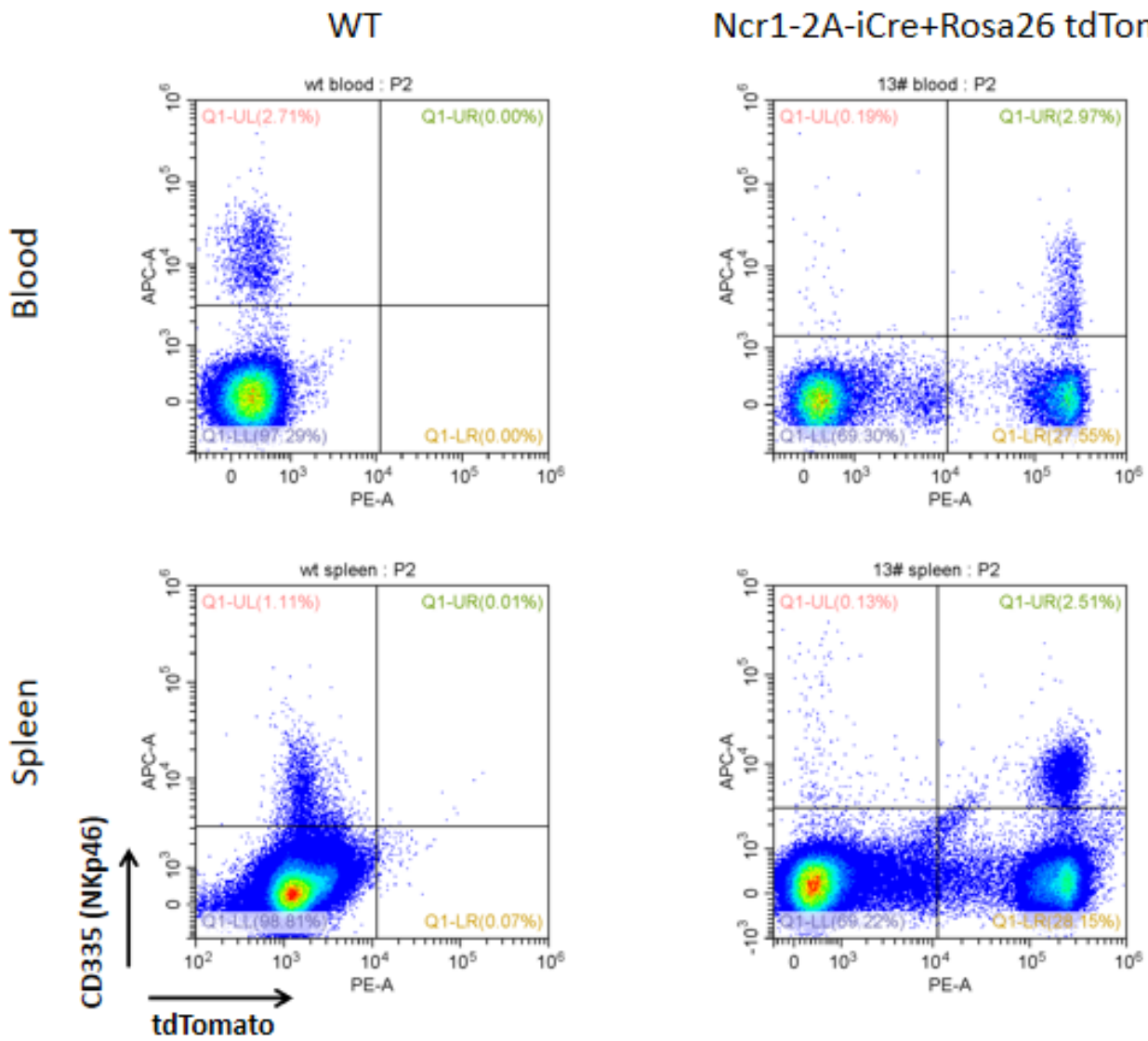


Fig1 Cre-mediated recombination in NK cells derived from spleen and peripheral blood of Ncr1-(2A-iCre);Rosa26 tdTomato mice.

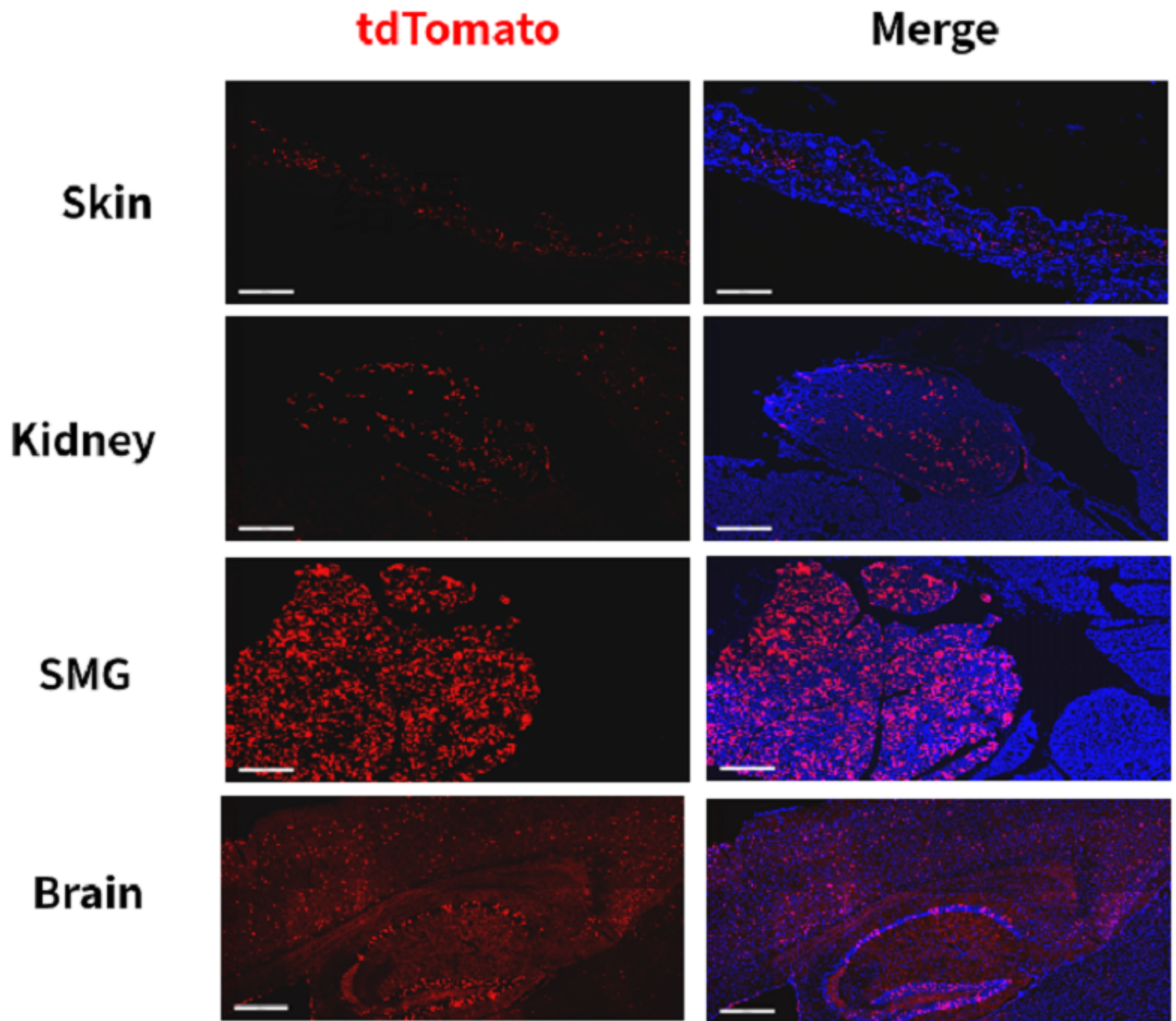


Fig. 2: Detection of tdTomato (red) in some cells of the skin, kidney, submandibular gland(SMG) and brain driven from *Ncr1^{icre/+}; Rosa26^{tdTomato/+}* mice.

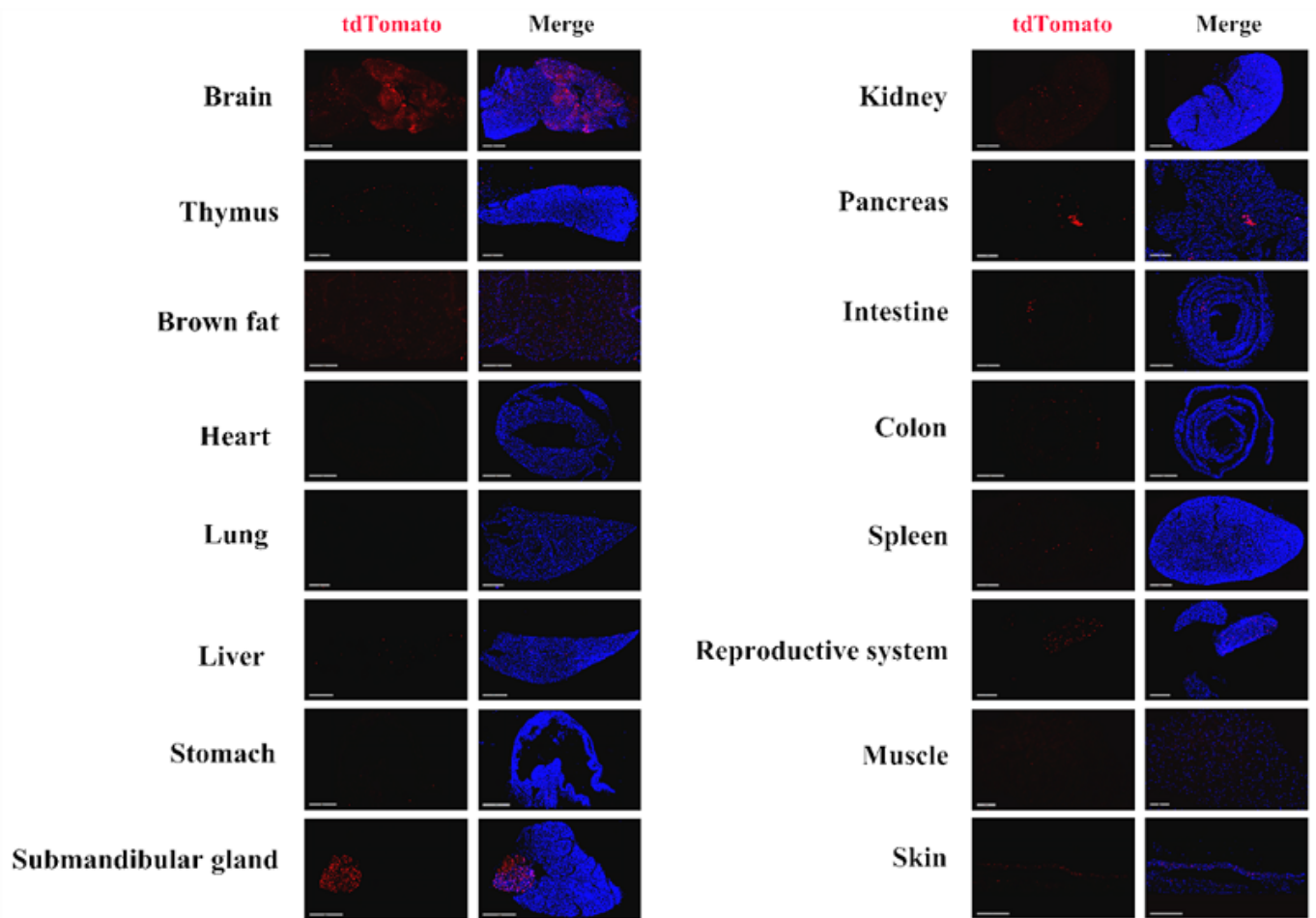


Fig. 3 Detection of tdTomato (red) in various tissues of *Ncr1^{icre/+}; Rosa26^{tdTomato/+}* mice. Cre-mediated recombination can be detected in some cells of skin, kidney, liver, thymus, spleen, submandibular gland (SMG), brain, pancreas, colon, intestine, brown fat, testis and epididymis. But tdTomato expression can not be observed in the lung, heart or muscle. (For more detailed information please contact our technical advisor.)