

Cdh1-2A-DreERT2

系統名	C57BL/6Smoc- <i>Cdh1</i> ^{em3(2A-DreERT2)Smoc}
SMOC番号	NM-KI-190031
維持形態	Sperm cryopreservation

遺伝子の概要

Gene Symbol Cdh1	Synonyms	Um; UVO; Ecad; ARC-1; E-cad; L-CAM; AA960649
	NCBI ID	12550
	MGI ID	88354
	Ensembl ID	ENSMUSG00000000303
	Human Ortholog	CDH1

説明

A 2A-DreERT2 expression cassette was knocked into the Cdh1 gene stop codon site via CRISPR/Cas mediated recombination.

応用分野: Dre recombinase tool

*Literature published using this strain should indicate: Cdh1-2A-DreERT2 mice (Cat. NO. NM-KI-190031) were purchased from Shanghai Model Organisms Center, Inc..

表現型データ

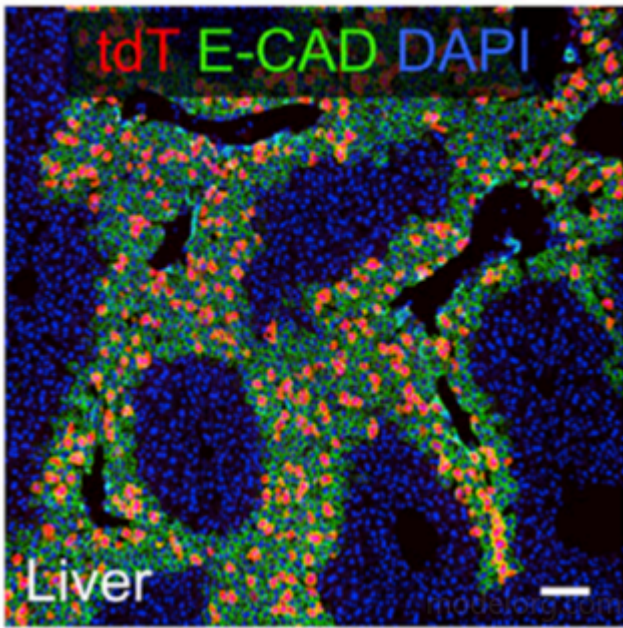
Cdh1-2A-DreER;tdT

Fig. 1 DreERT2-mediated recombination in the liver of $Cdh1^{DreERT2/+}$; $R26^{tdtomato/+}$ mouse. Tdtomato (red) expression can be detected in the liver after tamoxifen treatment. *Cdh1* gene encodes E-cadherin(E-CAD), a calcium-dependent adhesion molecule that expressed primarily in epithelial cells. (Documented in the following reference.)

出版物

[A Suite of New Dre-recombinase Drivers Markedly Expands the Ability to Perform Intersectional Genetic Targeting](#)

References: CELL STEM CELL