

# hSIGLEC8(2)

系統名	C57BL/6Smoc- <i>Siglecf</i> <sup>em1(hSIGLEC8)Smoc</sup>
SMOC番号	NM-HU-210033
維持形態	Embryo cryopreservation

## 遺伝子の概要

Gene Symbol <b>Siglecf</b>	<b>Synonyms</b>	Siglec5; mSiglec-F
	<b>NCBI ID</b>	<a href="#">233186</a>
	<b>MGI ID</b>	<a href="#">2681107</a>
	<b>Ensembl ID</b>	<a href="#">ENSMUSG00000039013</a>
	<b>Human Ortholog</b>	SIGLECF

## 説明

The endogenous mice *Siglecf* gene was replaced by human SIGLEC8 gene. While hSIGLEC8(Stock No.NM-HU-204983) mice function similarly to hSIGLEC8(2) mice,for more detailed information please contact our technical advisor.

**応用分野:** inmmeue therapy; drug screening

\*Literature published using this strain should indicate: hSIGLEC8(2) mice (Cat. NO. NM-HU-210033) were purchased from Shanghai Model Organisms Center, Inc..

## 表現型データ

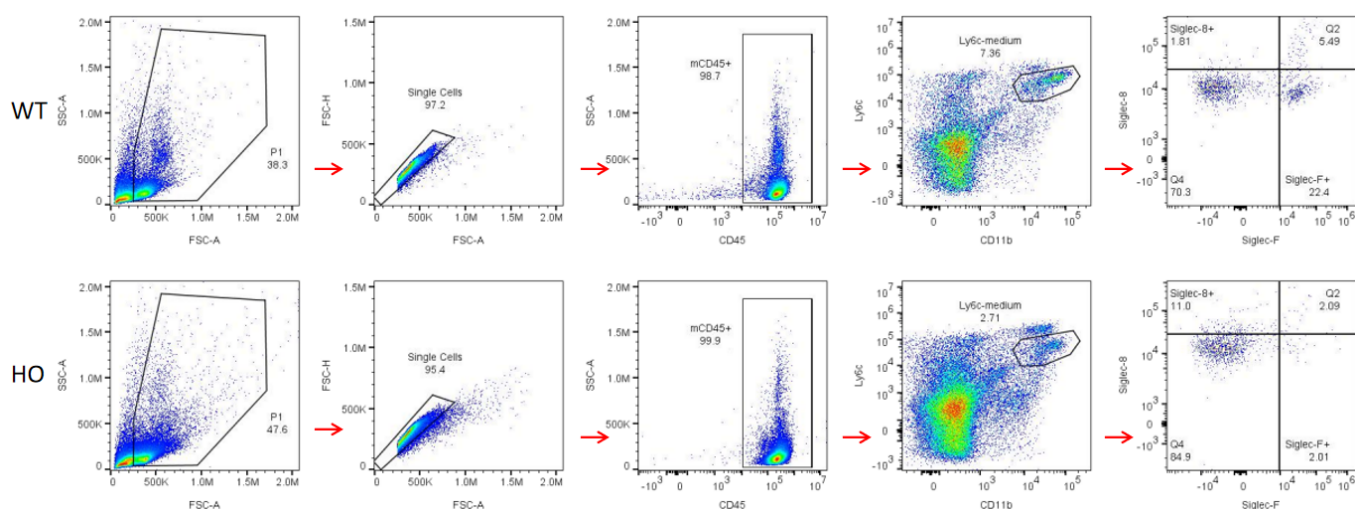


Fig1. Strain specific SIGLEC8 expression analysis in homozygous hSIGLEC8 mice by flow cytometry. Spleen derived eosinophils were collected and analyzed by flow cytometry with species-specific anti-hSIGLEC8 and anti-mSIGLEC-F antibody. hSIGLEC8 was detectable in hSIGLEC8 mice but not in WT mice, mSIGLEC-F was detectable in WT mice but not in hSIGLEC8 mice.

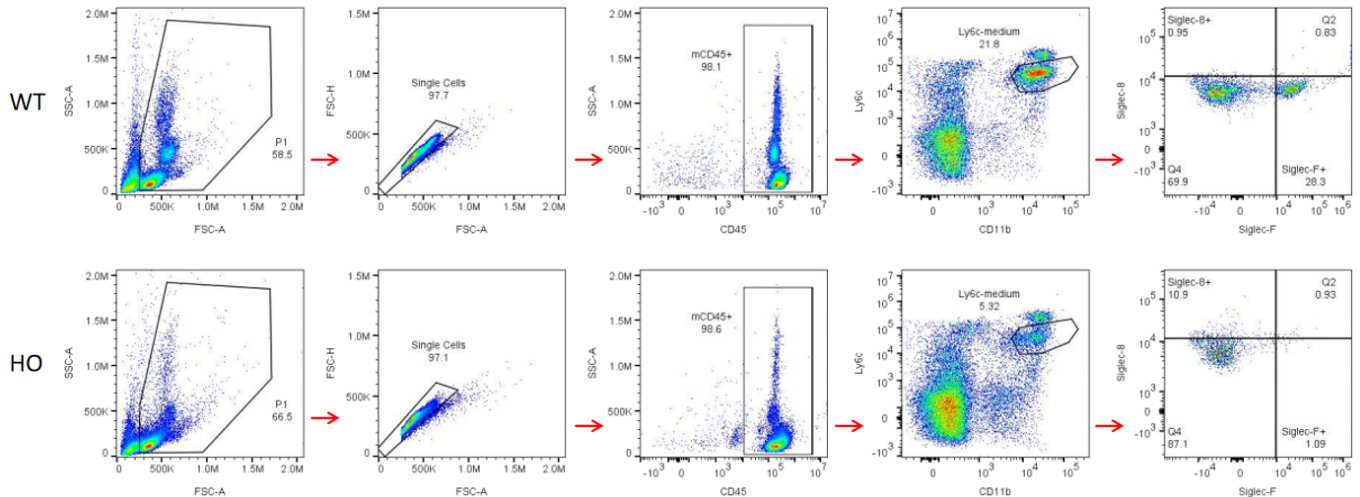


Fig2. Strain specific SIGLEC8 expression analysis in homozygous hSIGLEC8 mice by flow cytometry. Eosinophils of PBMC were collected from WT and homozygous hSIGLEC8 mice, and analyzed by flow cytometry with species-specific anti-hSIGLEC8 and anti-mSIGLEC-F antibody. hSIGLEC8 was detectable in a small proportion of eosinophils in hSIGLEC8 mice, and the mSIGLEC-F was not expressed.