

Atp4b-IRES-CreERT2

系統名	C57BL/6Smoc- <i>Atp4b</i> ^{em1(IRES-CreERT2-WPRE-pA)Smoc}
SMOC番号	NM-KI-210118
維持形態	Embryo cryopreservation

遺伝子の概要

Gene Symbol Atp4b	Synonyms	AV080843
	NCBI ID	11945
	MGI ID	88114
	Ensembl ID	ENSMUSG00000031449
	Human Ortholog	ATP4B

説明

An IRES-CreERT2-WPRE-pA expression cassette was knocked into the *Atp4b* gene start codon site. Besides, An IRES-CreERT2 expression cassette were knock into the *Bhlha15* gene stop codon site to generate *Atp4b*-IRES-CreERT2(2)(Stock No. NM-KI-210119) mice.

応用分野: Cre tool mice

*Literature published using this strain should indicate: *Atp4b*-IRES-CreERT2 mice (Cat. NO. NM-KI-210118) were purchased from Shanghai Model Organisms Center, Inc..

表現型データ

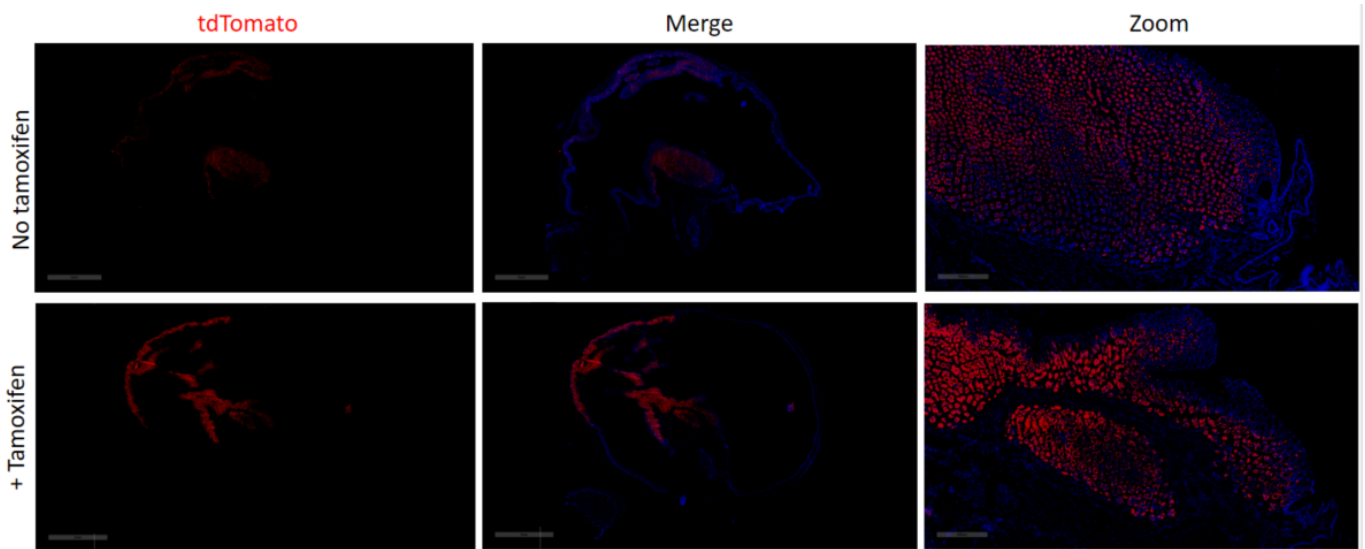
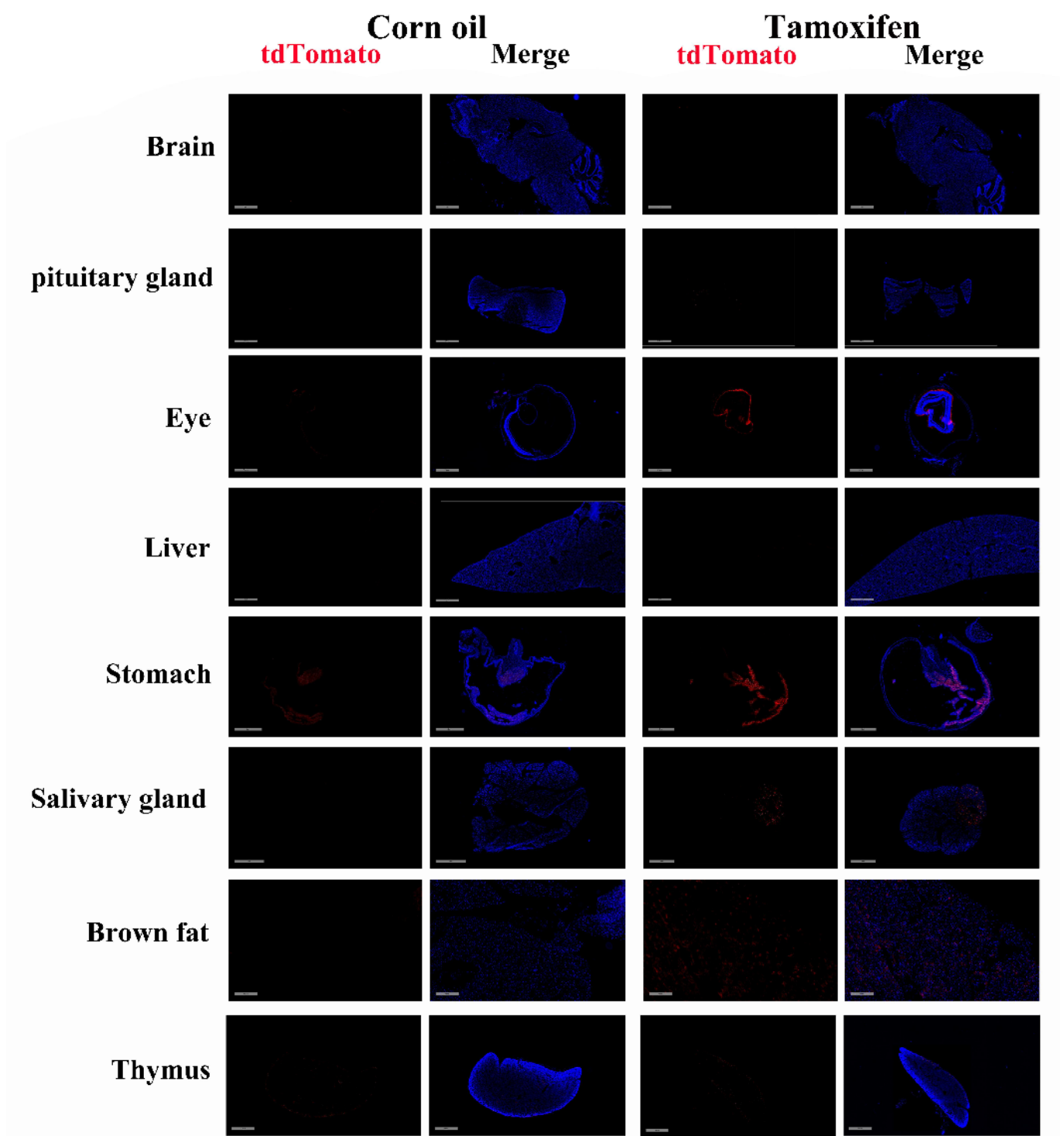


Fig1. CreERT2-mediated recombination in the stomach of $Atp4b^{CreERT2/+}$; $Rosa26^{tdTomato/+}$ mouse. TdTomato (red) expression can be detected in the stomach of $Atp4b^{CreERT2/+}$; $Rosa26^{tdTomato/+}$ mouse after tamoxifen treatment. Some leakiness was detected prior to tamoxifen exposure.



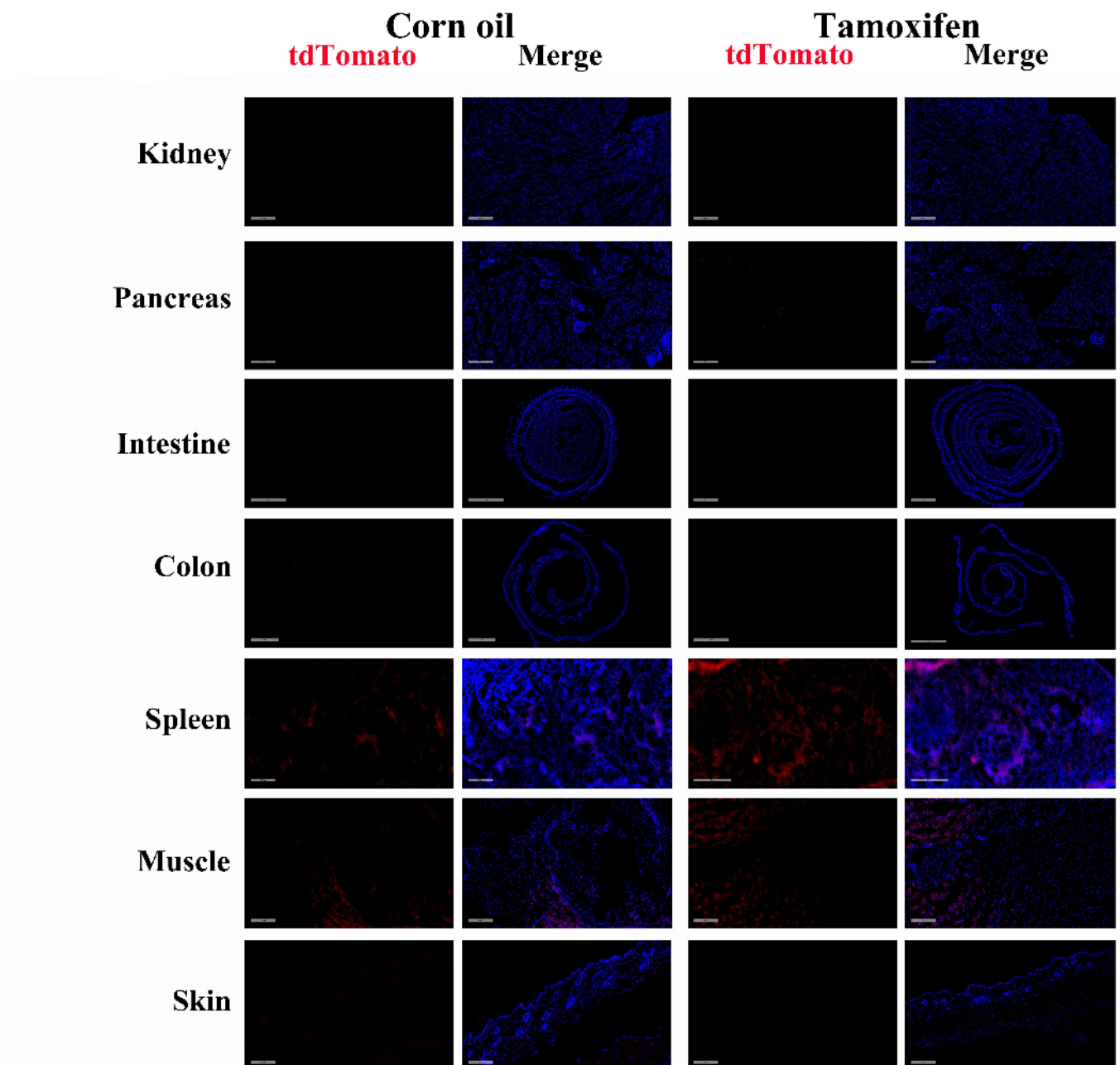


Fig2. Detection of tdTomato (red) in various tissues of *Atp4bCreERT2/+; Rosa26tdTomato/+* mice after tamoxifen treatment. Tdtomato was expressed in the glandular stomach. Tdtomato can also be detected in the pituitary, thymus, salivary glands, brown adipose tissue, spleen, pancreas, and muscle. Some leakiness was detected prior to tamoxifen exposure. TdTomato expression can not be detected in the brain, liver, lung, large intestine, small intestine, kidney or skin.