

Scgb1a1-IRES-Cre

系統名	C57BL/6Smoc- <i>Scgb1a1</i> ^{em1(IRES-Cre)Smoc}
SMOC番号	NM-KI-210120
維持形態	Repository Live

遺伝子の概要

Gene Symbol Scgb1a1	Synonyms	UG, UGB, Utg, CC10, CC16, CCSP, PCB-BP
	NCBI ID	22287
	MGI ID	98919
	Ensembl ID	ENSMUSG00000024653
	Human Ortholog	SCGB1A1

説明

IRES-Cre expression cassette was knocked into the *Scgb1a1* gene.

応用分野: These mice express cre recombinase from the *Scgb1a1* locus (secretoglobin). This strain may useful for in the research of bronchiolar non-ciliated Clara cells.

*Literature published using this strain should indicate: *Scgb1a1*-IRES-Cre mice (Cat. NO. NM-KI-210120) were purchased from Shanghai Model Organisms Center, Inc..

表現型データ

tdTomato

Merge

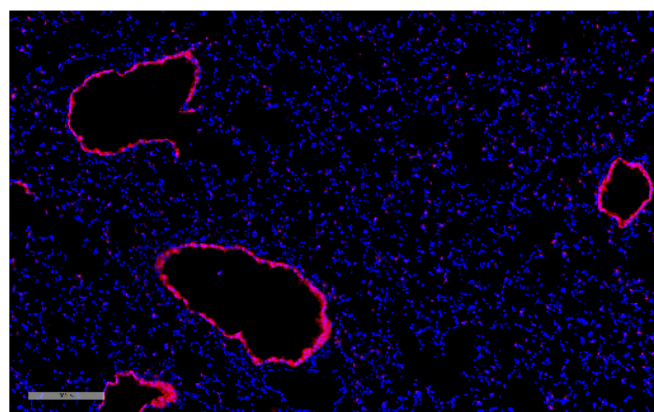
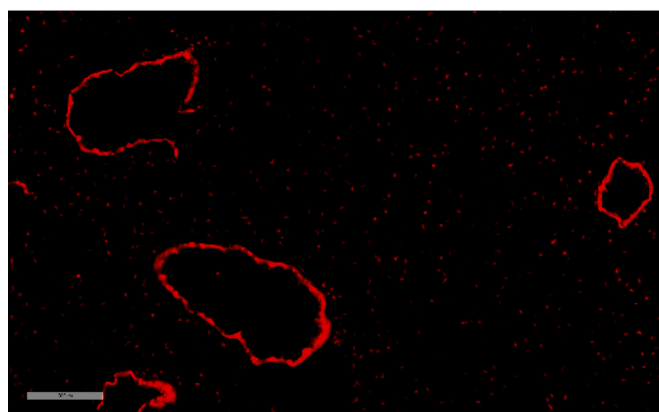


Fig.1 Cre-mediated recombination in the lung of $Scgb1a1^{Cre/+}; Rosa26^{tdTomato/+}$ mouse. TdTomato(red) expression can be detected in the bronchial and alveolar cells of $Scgb1a1^{Cre/+}; Rosa26^{tdTomato/+}$ mouse.

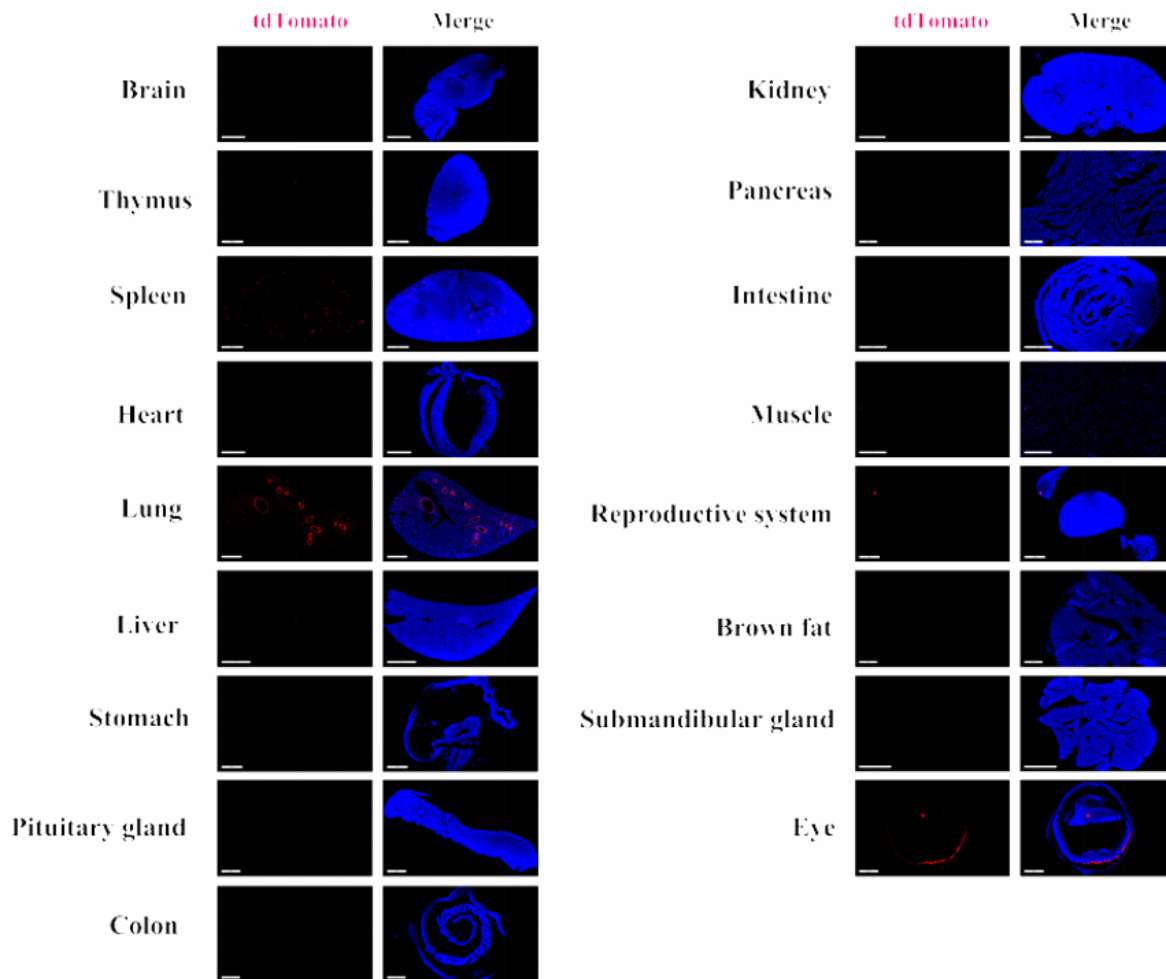


Fig.2 Detection of tdTomato(red) in various tissues of $Scgb1a1^{Cre/+}; Rosa26^{tdTomato/+}$ mice. Cre mediated recombination can be detected in the some cells of lung and spleen. Tdtomato can not be detected in the brain, pituitary gland, thymus, heart, stomach, kidney, pancreas, liver, lung, intestine, muscle, brown fats, submandibular gland, testis and epididymis. (For more detailed information please contact our technical advisor.)