

Scgb3a2-IRES-Cre

系統名	C57BL/6Smoc- <i>Scgb3a2</i> ^{em1(IRES-Cre-polyA)Smoc}
SMOC番号	NM-KI-210127
維持形態	Embryo cryopreservation

遺伝子の概要

Gene Symbol Scgb3a2	Synonyms	Pnsp1; UGRP1; LuLeu1; Utgrp1
	NCBI ID	117158
	MGI ID	2153470
	Ensembl ID	ENSMUSG00000038791
	Human Ortholog	SCGB3A2

説明

IRES-Cre-polyA expression cassette was knocked into the *Scgb3a2* gene.

応用分野: Secretoglobin (SCGB) 3A2 is a member of the SCGB gene superfamily of cytokine-like secretory proteins of small molecular weight. SCGB proteins mainly expressed in airway epithelial cells.

*Literature published using this strain should indicate: *Scgb3a2*-IRES-Cre mice (Cat. NO. NM-KI-210127) were purchased from Shanghai Model Organisms Center, Inc..

表現型データ

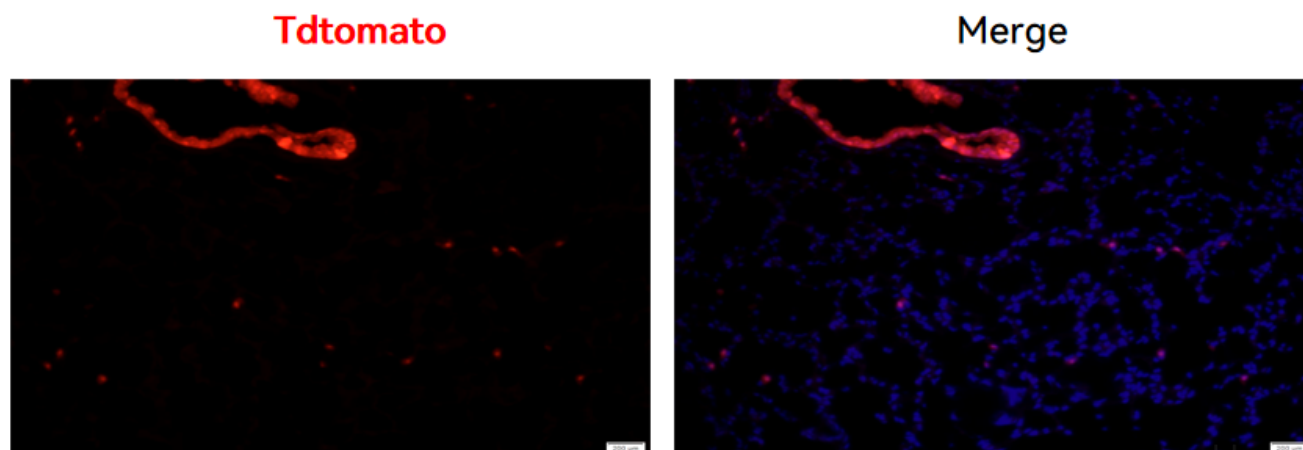


Fig. 1 Cre-mediated recombination in the lung of $Scgb3a2^{Cre/+}$; $Rosa26^{tdTomato/+}$ mouse. TdTomato(red) expression can be detected in the epithelial cells of $Scgb3a2^{Cre/+}$; $Rosa26^{tdTomato/+}$ mouse.

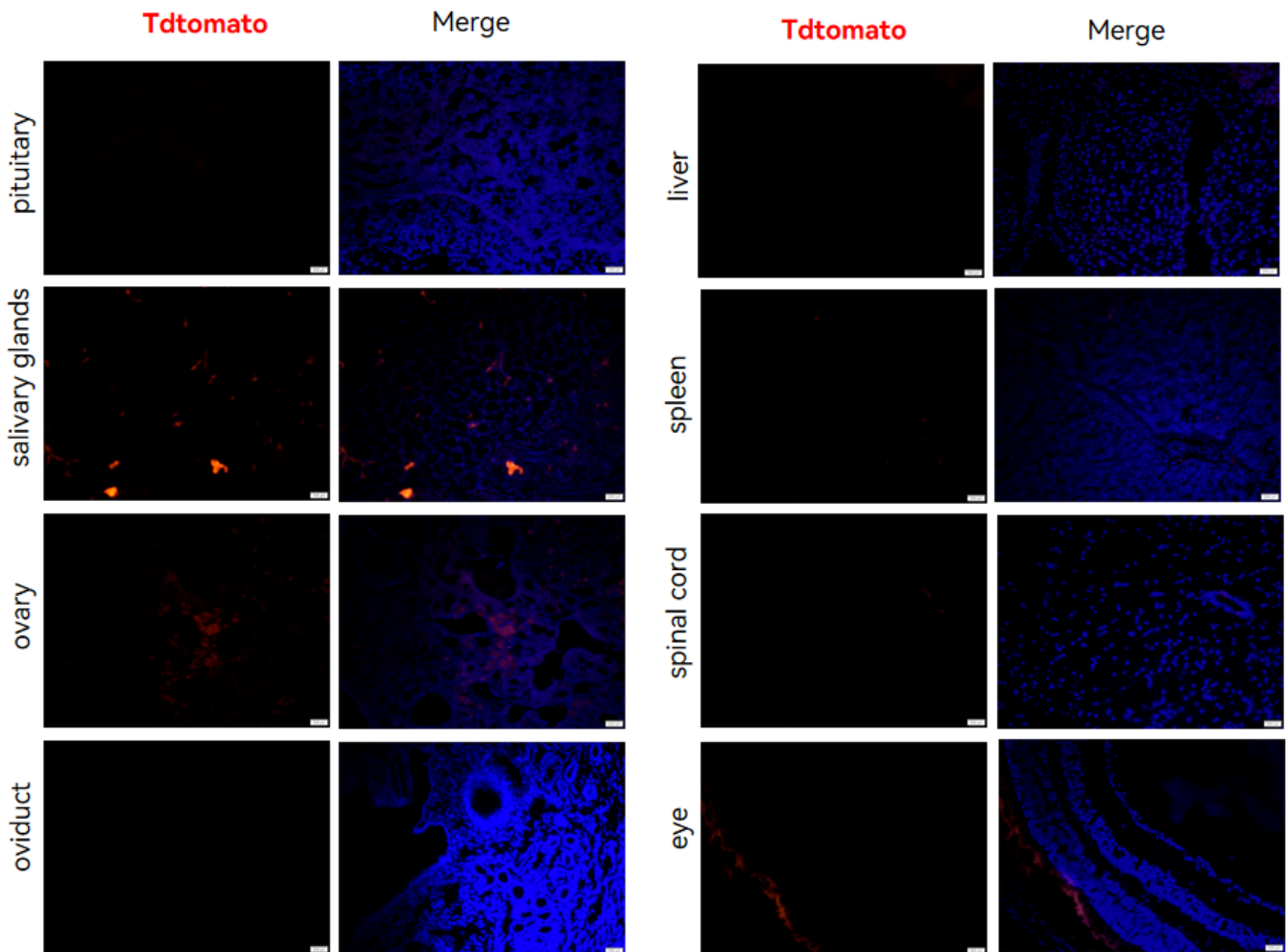


Fig. 2 Detection of tdTomato(red) in various tissues of $Scgb3a2^{Cre/+}$; $Rosa26^{tdTomato/+}$ mice. Tdtomato was expressed in the airway epithelium cells of an adult female mouse. TdTomato can also be detected in individual cells of salivary glands, ovary, spleen and spinal cord. TdTomato can not be detected in the pituitary, oviduct, liver and eyes. (For more detailed information please contact our technical advisor.)