

Tek-Cre(SD)

遺伝子の概要

説明

Cre expression cassette was knocked into the Tek gene.

*Literature published using this strain should indicate: Tek-Cre(SD) rats (Cat. NO. NR-KI-210133) were purchased from Shanghai Model Organisms Center, Inc..

表現型データ

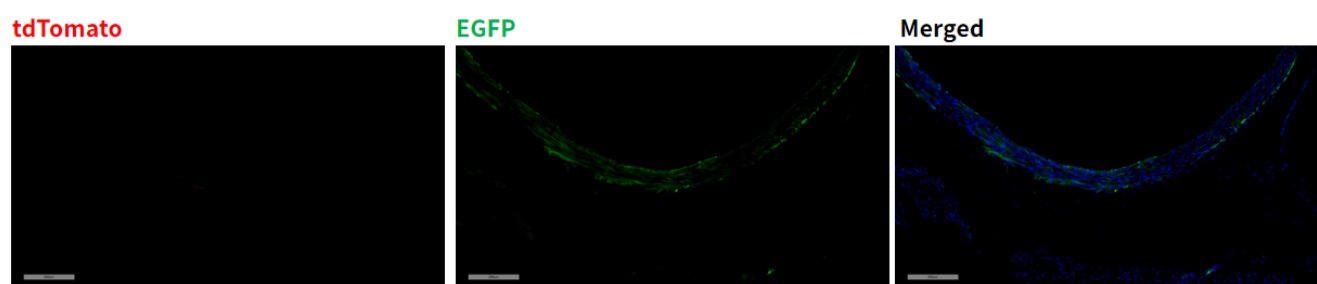


Fig 1. Cre-mediated recombination in aorta of Tek^{Cre/+}; Rosa26^{mTmG+} rat.

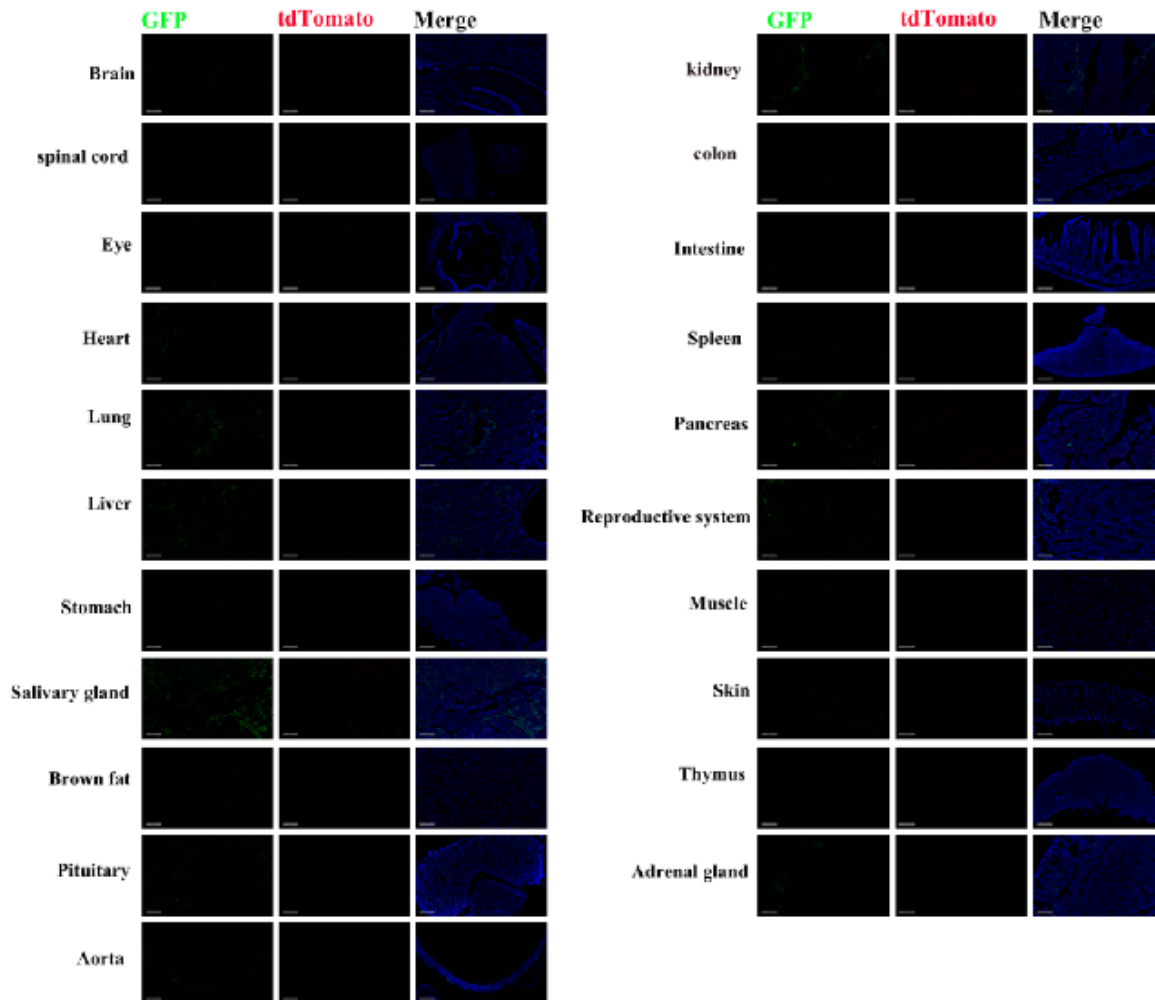


Fig 2. Detection of tdTomato (red) and GFP (green) in various tissues of $Tek^{Cre/+}; Rosa26^{mTmG+}$ rat. Expression tissues include: brain, eyeball, heart, lung, liver, salivary gland, brown fat, pituitary gland, aorta, kidney, spleen, pancreas, testis, skin, adrenal gland. A few cells expressed in spinal cord, stomach, colon, small intestine, muscle, thymus. (37-day old, male) (For more detailed information please contact our technical advisor.)