

R26-hCD46-IRES-tdTomato

系統名	C57BL/6Smoc- <i>Gt(ROSA)26Sor</i> ^{em1(SA-hCD46-IRES-tdTomato-polyA)Smoc}
SMOC番号	NM-KI-190087
維持形態	Repository Live

遺伝子の概要

Gene Symbol Gt(ROSA)26Sor	Synonyms	R26, ROSA26, AV258896, Gtrg eo26, Gtrosa26, Thumpd3as1
	NCBI ID	14910
	MGI ID	104735
	Ensembl ID	ENSMUSG00000086429

説明

These mice harbor a SA-human CD46-IRES-tdTomato-polyA cassette in the Rosa26 locus generated by homologous recombination.

応用分野: Immune-related

*Literature published using this strain should indicate: R26-hCD46-IRES-tdTomato mice (Cat. NO. NM-KI-190087) were purchased from Shanghai Model Organisms Center, Inc..

表現型データ

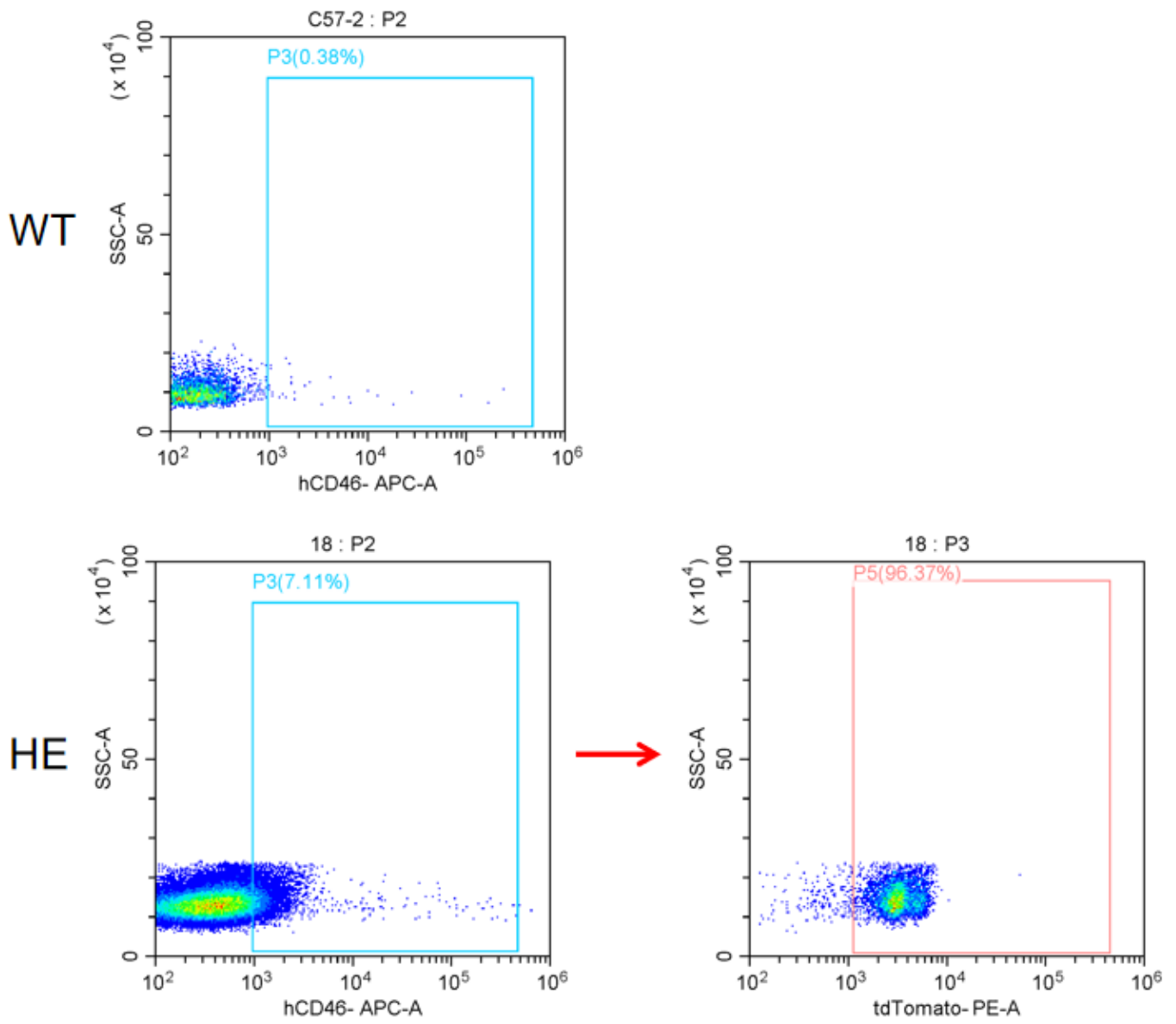


Fig1. Analysis of human CD46 and tdTomato expression in PBMC by FACS . The heterozygous KI mouse expresses human CD46 and tdTomato in PBMC.