

R26-CAG-EGFP(3)

系統名	C57BL/6Smoc- <i>Gt(ROSA)26Sor</i> ^{em2(CAG-EGFP-WPRE-polyA)Smoc}
SMOC番号	NM-KI-190090
維持形態	Repository Live

遺伝子の概要

Gene Symbol Gt(ROSA)26Sor	Synonyms	R26, ROSA26, AV258896, Gtrg eo26, Gtrosa26, Thumpd3as1
	NCBI ID	14910
	MGI ID	104735
	Ensembl ID	ENSMUSG00000086429

説明

These mice harbor a CAG-EGFP-WPRE-polyA cassette in the Rosa26 locus.² generated by homologous recombination. While R26-CAG-EGFP(Stock No.NM-KI-190088) and R26-CAG-EGFP(2)(Stock No.NM-KI-190089) function similarly to R26-CAG-EGFP(3) mice,for more detailed information please contact our technical advisor.

応用分野: Reporter mice,EGFP

*Literature published using this strain should indicate: R26-CAG-EGFP(3) mice (Cat. NO. NM-KI-190090) were purchased from Shanghai Model Organisms Center, Inc..

表現型データ

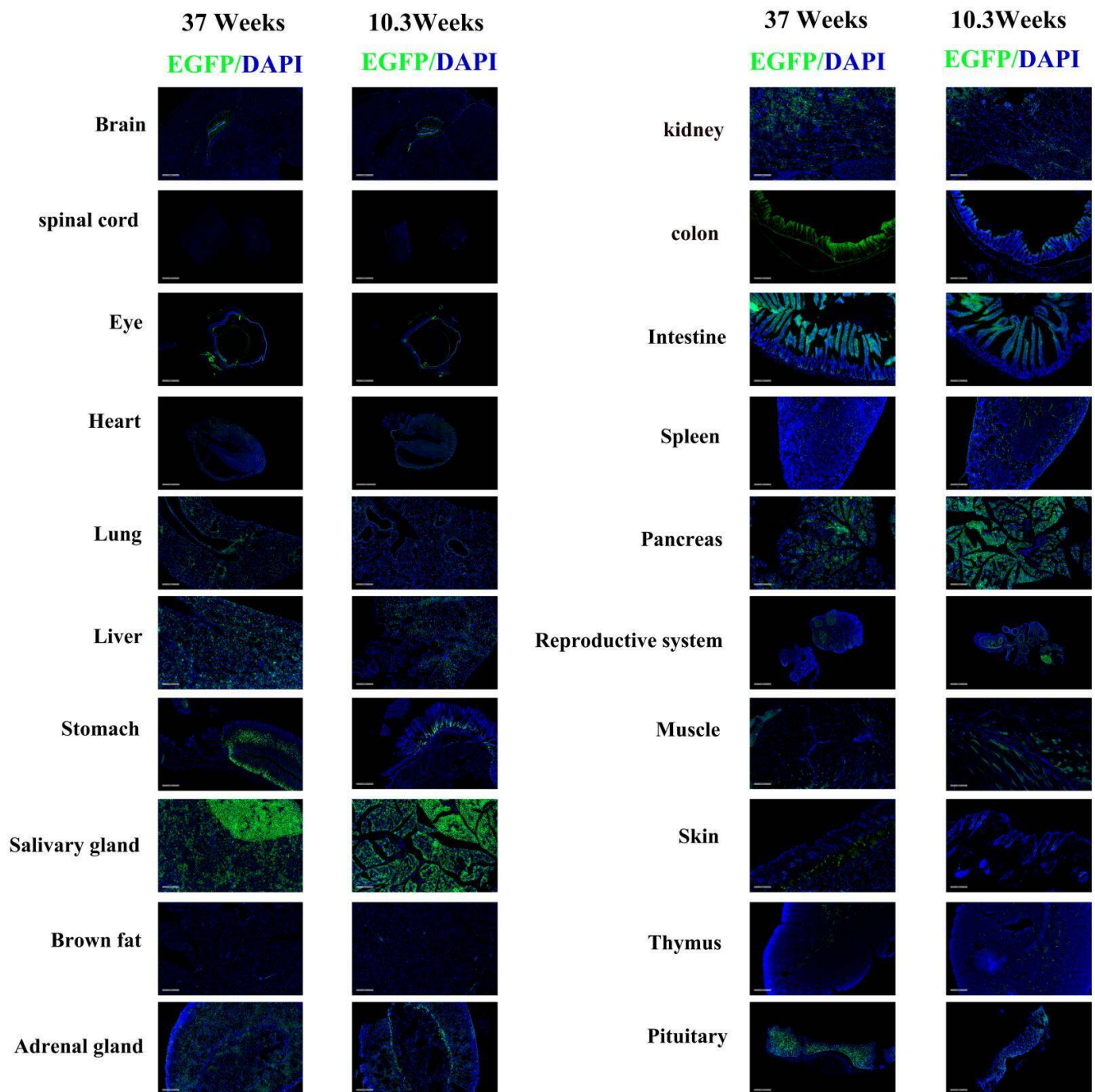


Fig 1. Detection of EGFP (Green) in various tissues of R26-CAG-EGFP(3) mice. Expression tissues include: brain, eyes, heart, lungs, liver, stomach, salivary glands, adrenal glands, kidneys, colon, small intestine, spleen, pancreas, uterus and ovaries, skin, thymus, pituitary gland. A few cells expressed in spinal cord and brown fat. (37-week old and 10.3-week old, female) (For more detailed information please contact our technical advisor.)

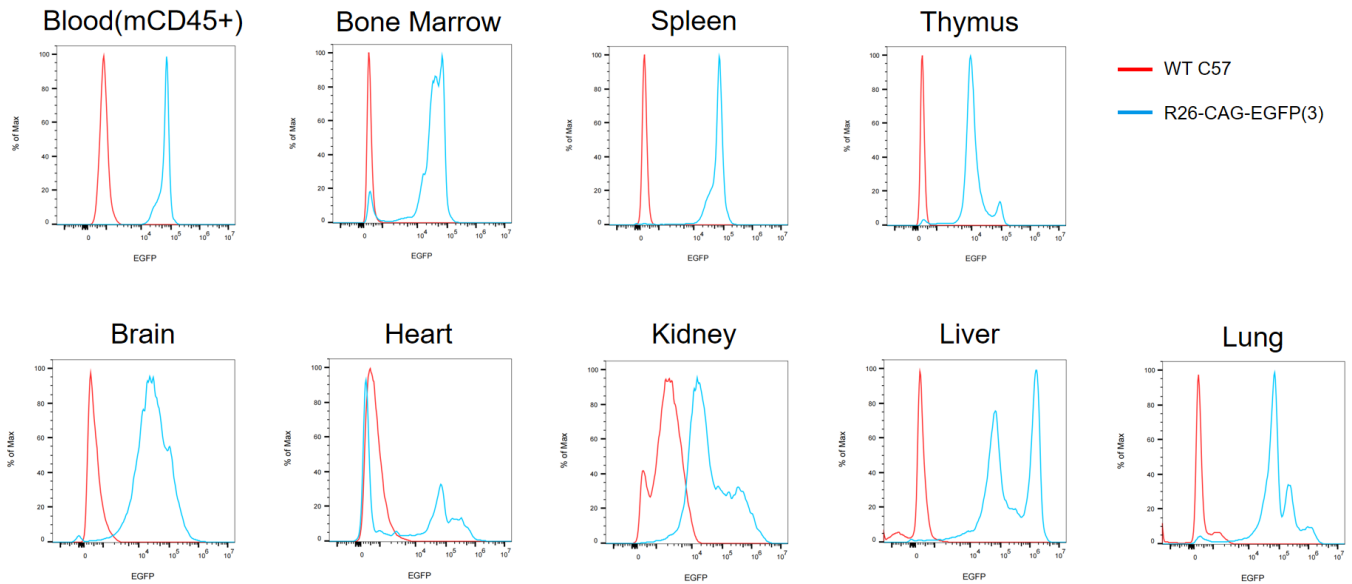


Fig2. Comparison of EGFP expression in live CD45 blood cells and live cells isolated from various organs.

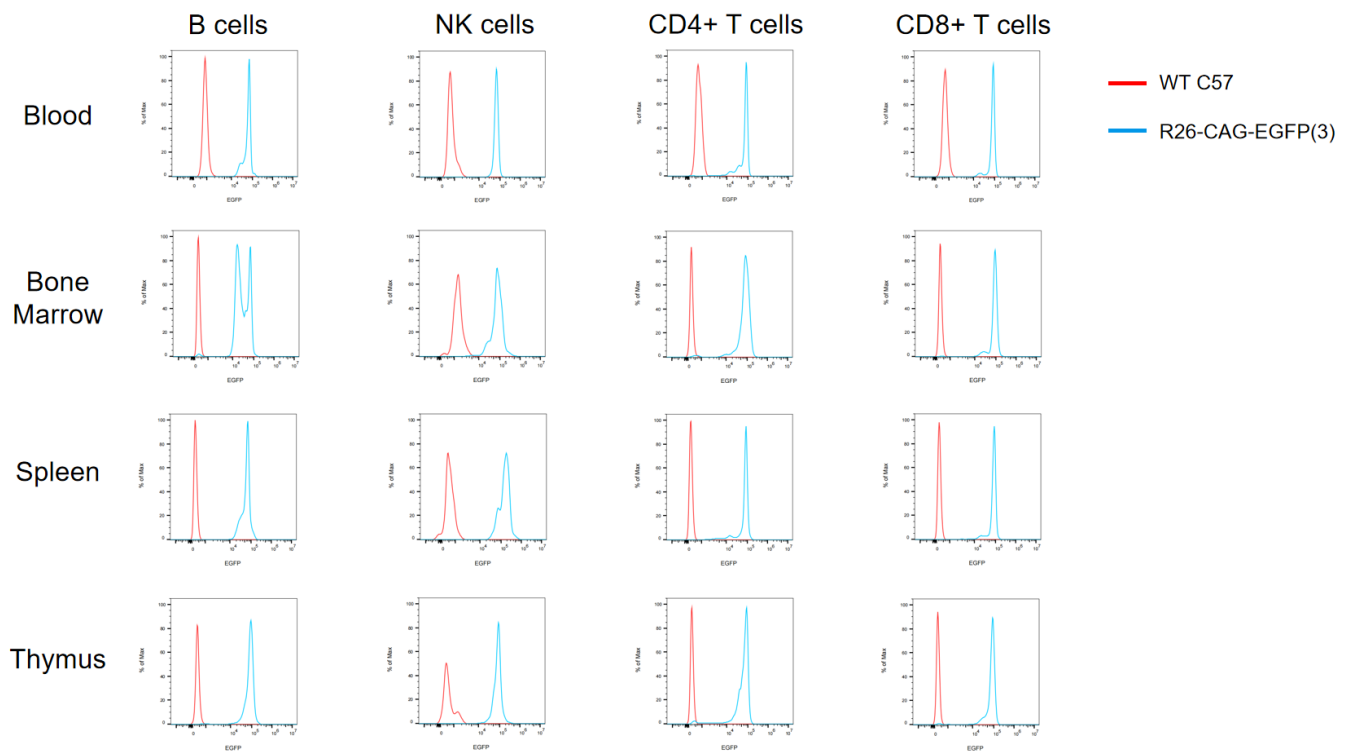


Fig3. Comparison of EGFP expression in live CD45 cells in PB, bone marrow, spleen and thymus.

出版物

[CCL2-mediated inflammatory pathogenesis underlies high myopia-related anxiety](#)

References: Cell Discovery