

## B2m-KO(NMG)

系統名	NOD.Cg-Prkdc <sup>scid</sup> Il2rg <sup>em1Smoc</sup> B2m <sup>em1Smoc</sup>
SMOC番号	NM-NSG-002
維持形態	Repository Live

### 遺伝子の概要

Gene Symbol B2m	Synonyms	beta2-m beta 2 microglobulin Ly-m11
	NCBI ID	<a href="#">12010</a>
	MGI ID	<a href="#">88127</a>
	Ensembl ID	<a href="#">ENSMUSG00000060802</a>
	Human Ortholog	B2M

### 説明

This B2m knockout mouse model was obtained by knocking out the exon 2-3 region of mouse B2m gene on the background of NMG mouse.

**応用分野:** immunodeficiency, immune system, transplantation research

\*Literature published using this strain should indicate: B2m-KO(NMG) mice (Cat. NO. NM-NSG-002) were purchased from Shanghai Model Organisms Center, Inc..

### 表現型データ

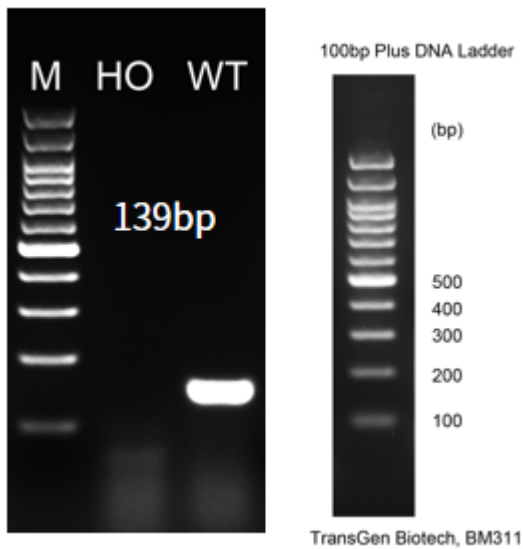


Fig1. Detection of B2m expression in cerebellum by RT-PCR.

Wild type: only one band at 139 bp with primers F1/R1(mB2m);

Abbr. M, DNA marker; HO, homozygous; WT, wild type.



Fig2. Expression characterization of mouse MHC I and MHC II in bone marrow, blood, spleen in B2m-KO(M-NSG) mice.