

# Lrat-2A-Cre

系統名	C57BL/6Smoc- <i>Lrat</i> <sup>em1(2A-Cre)Smoc</sup>
SMOC番号	NM-KI-190097
維持形態	Repository Live

## 遺伝子の概要

Gene Symbol Lrat	<b>Synonyms</b>	AI449251; 1300010A18Rik
	<b>NCBI ID</b>	<a href="#">79235</a>
	<b>MGI ID</b>	<a href="#">1891259</a>
	<b>Ensembl ID</b>	<a href="#">ENSMUSG00000028003</a>
	<b>Human Ortholog</b>	LRAT

## 説明

A 2A-Cre expression cassette was knocked into the Lrat gene stop codon site.

**応用分野:** Cre recombinase tool

\*Literature published using this strain should indicate: Lrat-2A-Cre mice (Cat. NO. NM-KI-190097) were purchased from Shanghai Model Organisms Center, Inc..

## 表現型データ

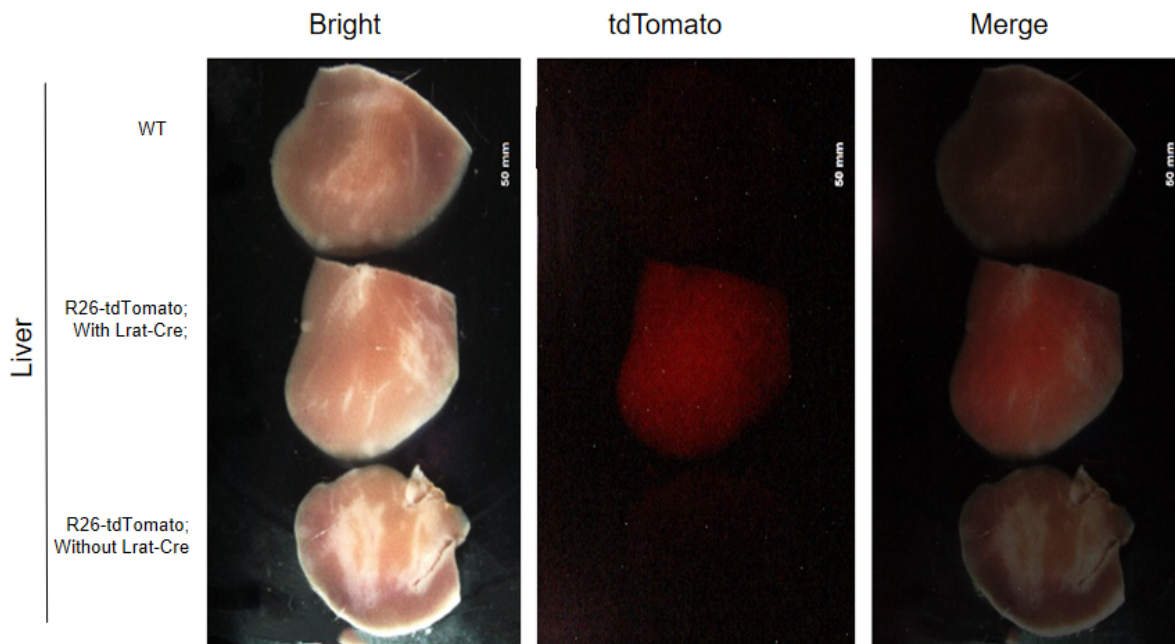


Fig1. Expression Pattern of tdTomato in LratCre/+ ; Rosa26tdTomato/+ mice.

Cre mediated recombination in liver nonparenchymal cells of LratCre/+ ; Rosa26tdTomato/+ mice. This strain represents an effective tool for generating liver nonparenchymal cells specific targeted mutants.

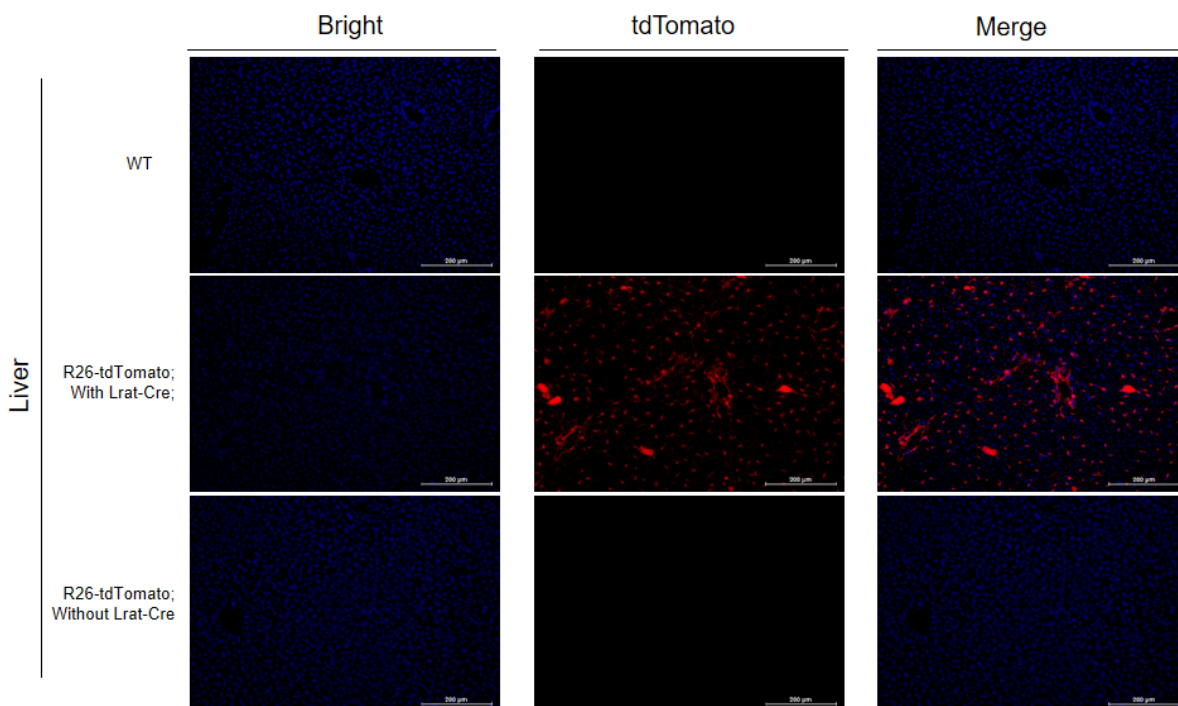


Fig2. Validation of tdTomato expression by fluorescence assay.

The liver nonparenchymal cells of Lrat-Cre mice were detected by fluorescence.

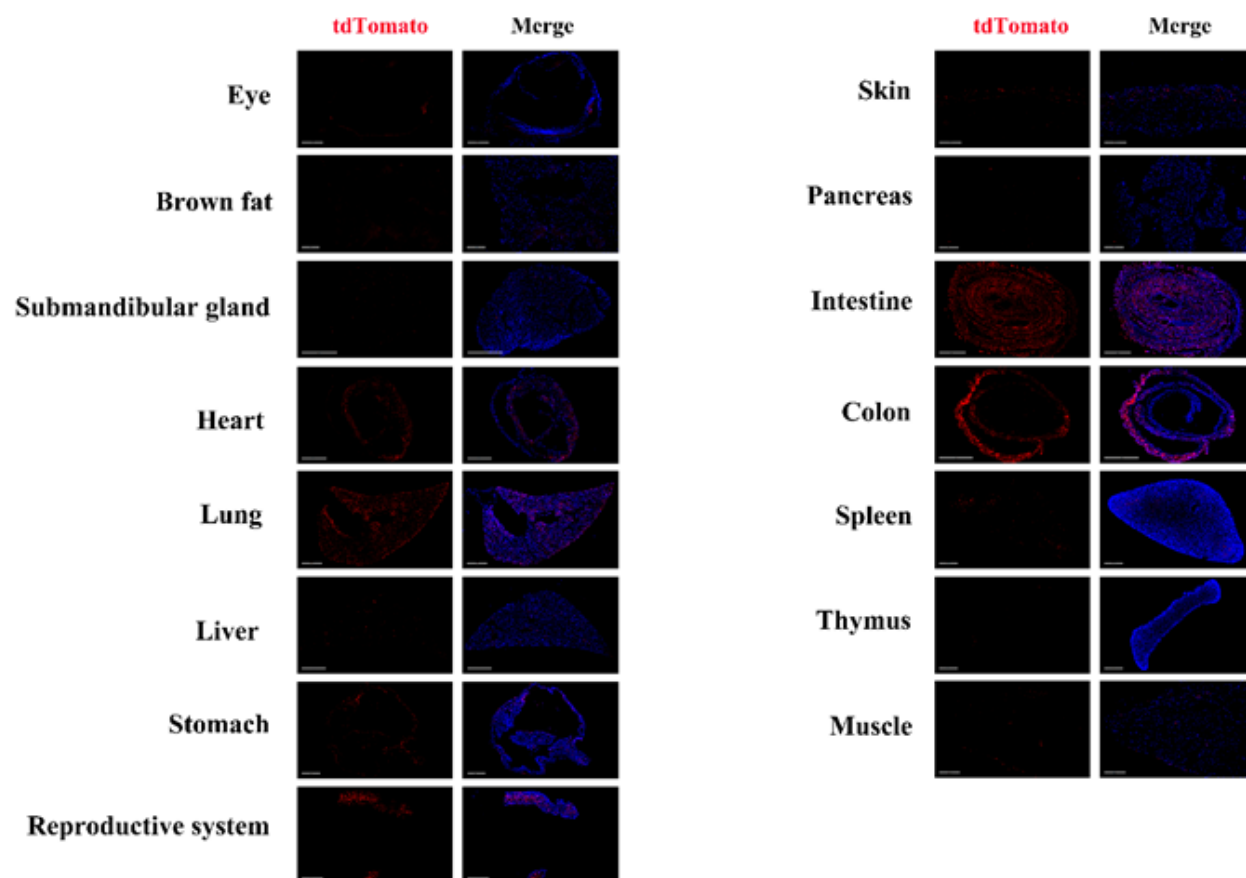


Fig. 3 Detection of tdTomato(red) in various tissues of  $Lrat^{Cre/+}; Rosa26^{tdTomato/+}$  mice. Cre-mediated recombination can be detected in some cells of the heart, liver, lung, stomach, uterus, colon, intestine, muscle and spleen. Tdtomato can not be detected in the retina, brown fat, submandibular gland or thymus. (For more detailed information please contact our technical advisor.)

## 出版物

[Aberrant iron distribution via hepatocyte-stellate cell axis drives liver lipogenesis and fibrosis](#)

References: Cell Metabolism