

# Ucp1-CreERT2

系統名	C57BL/6Smoc- <i>Ucp1</i> <sup>em1(Kozak-CreERT2-WPRE-polyA)Smoc</sup>
SMOC番号	NM-KI-190102
維持形態	Repository Live

## 遺伝子の概要

Gene Symbol Ucp1	Synonyms	Ucp; Slc25a7; AI385626
	NCBI ID	<a href="#">22227</a>
	MGI ID	<a href="#">98894</a>
	Ensembl ID	<a href="#">ENSMUSG00000031710</a>
	Human Ortholog	UCP1

## 説明

A Kozak-CreERT2-WPRE-polyA expression cassette was knocked into the Ucp1 gene start codon site.

**応用分野:** Cre recombinase tool

\*Literature published using this strain should indicate: Ucp1-CreERT2 mice (Cat. NO. NM-KI-190102) were purchased from Shanghai Model Organisms Center, Inc..

## 表現型データ

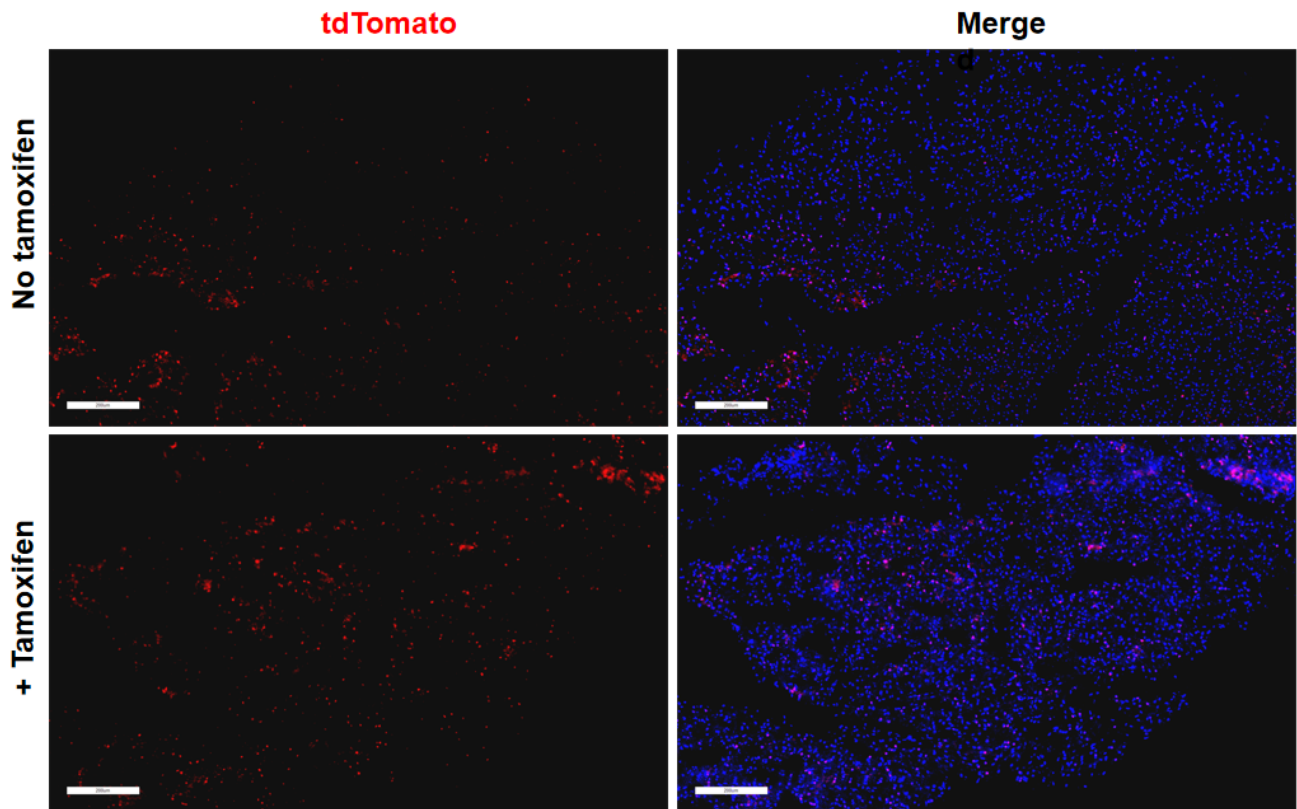


Fig1. Cre mediated recombination in brown fat of  $Ucp1^{CreERT2/+}; Rosa26^{tdTomato/+}$  mouse.

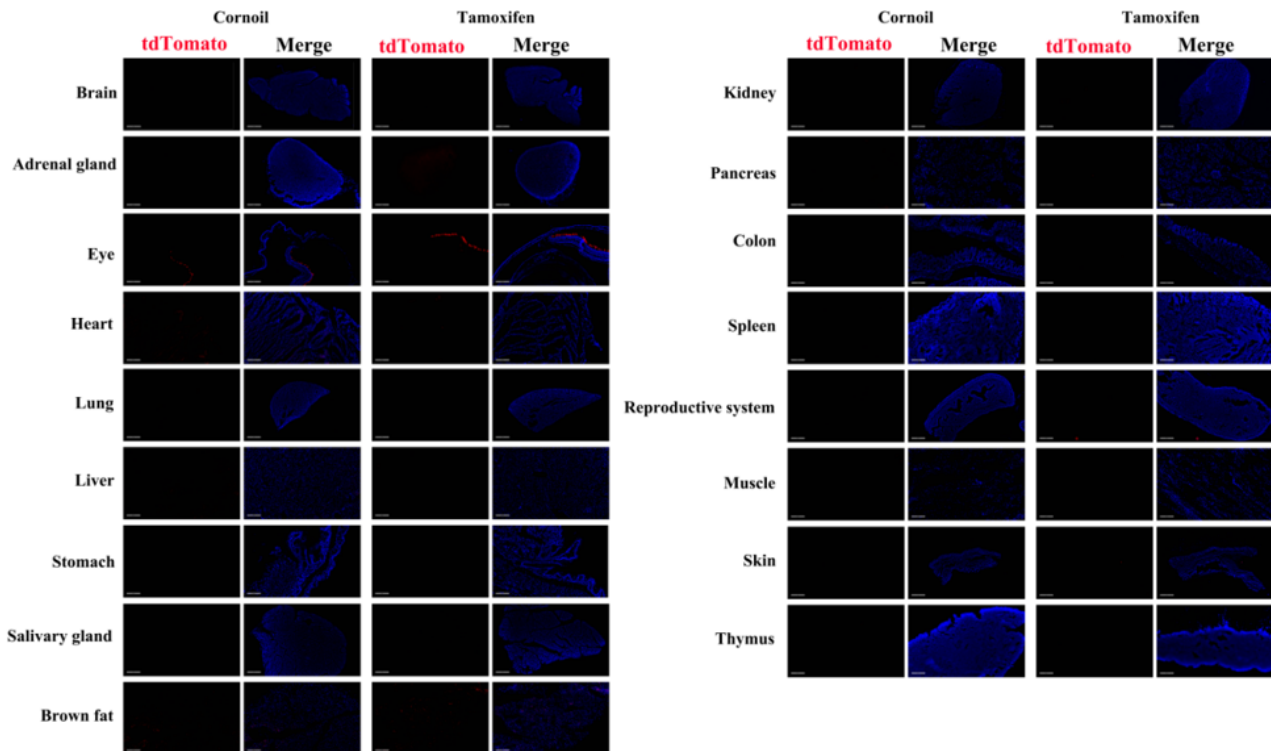


Fig2. Detection of tdTomato(red) in various tissues of  $Ucp1^{CreERT2/+}; Rosa26^{tdTomato/+}$  mouse. Expression tissues include: brown fat. A few cells expressed in salivary gland and thymus. Tissues that unexpressed include brain, adrenal gland, retina, heart, lung, liver, stomach, kidney, pancreas, colon, spleen, uterus, muscle, and skin. (9-

---

week old, female) (For more detailed information please contact our technical advisor.)

---