

# R26-CAG-Loxp-tdTomato-Loxp-EGFP(SD)

## 遺伝子の概要

---

## 説明

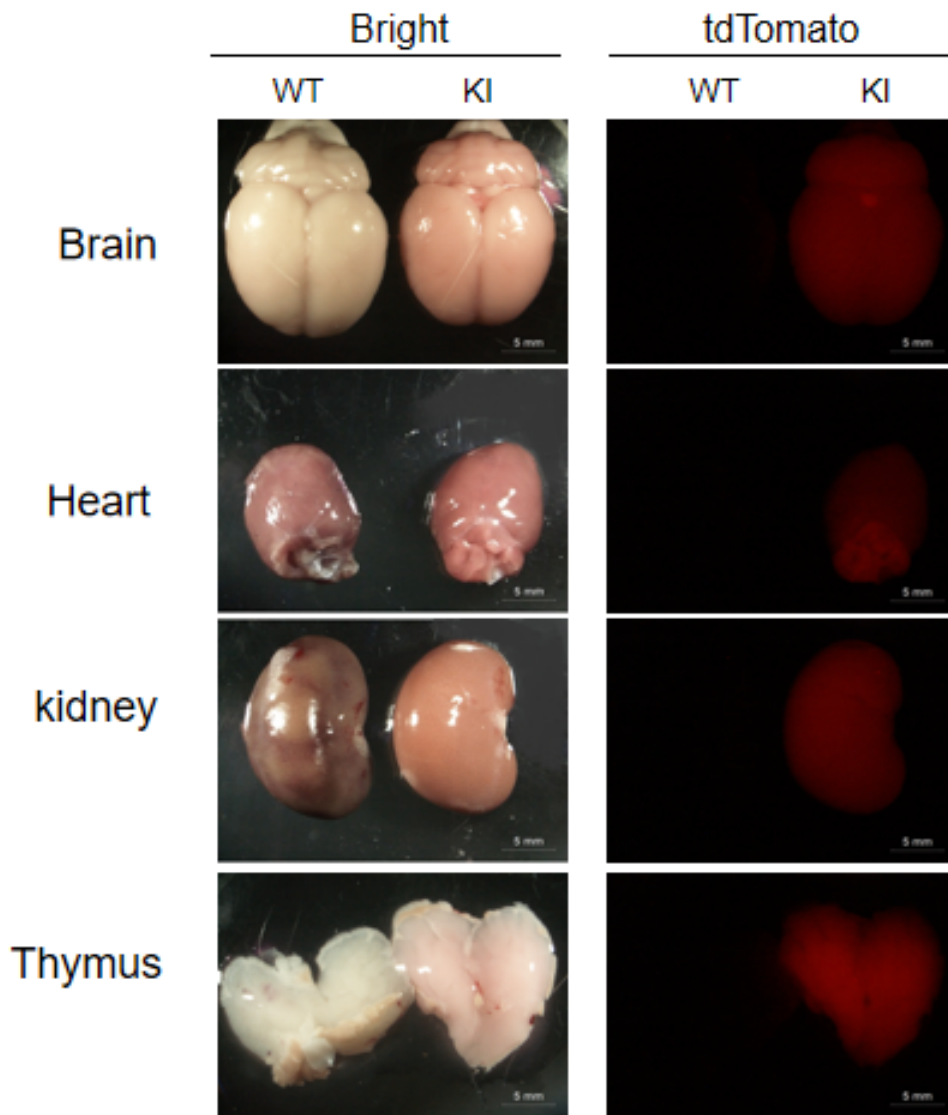
These rats harbor a CAG-Loxp-tdTomato-3xpolyA-Loxp-EGFP cassette in the Rosa26 locus generated by homologous recombination.

**応用分野:** Cre reporter

\*Literature published using this strain should indicate: R26-CAG-Loxp-tdTomato-Loxp-EGFP(SD) rats (Cat. NO. NR-KI-190007) were purchased from Shanghai Model Organisms Center, Inc..

---

## 表現型データ



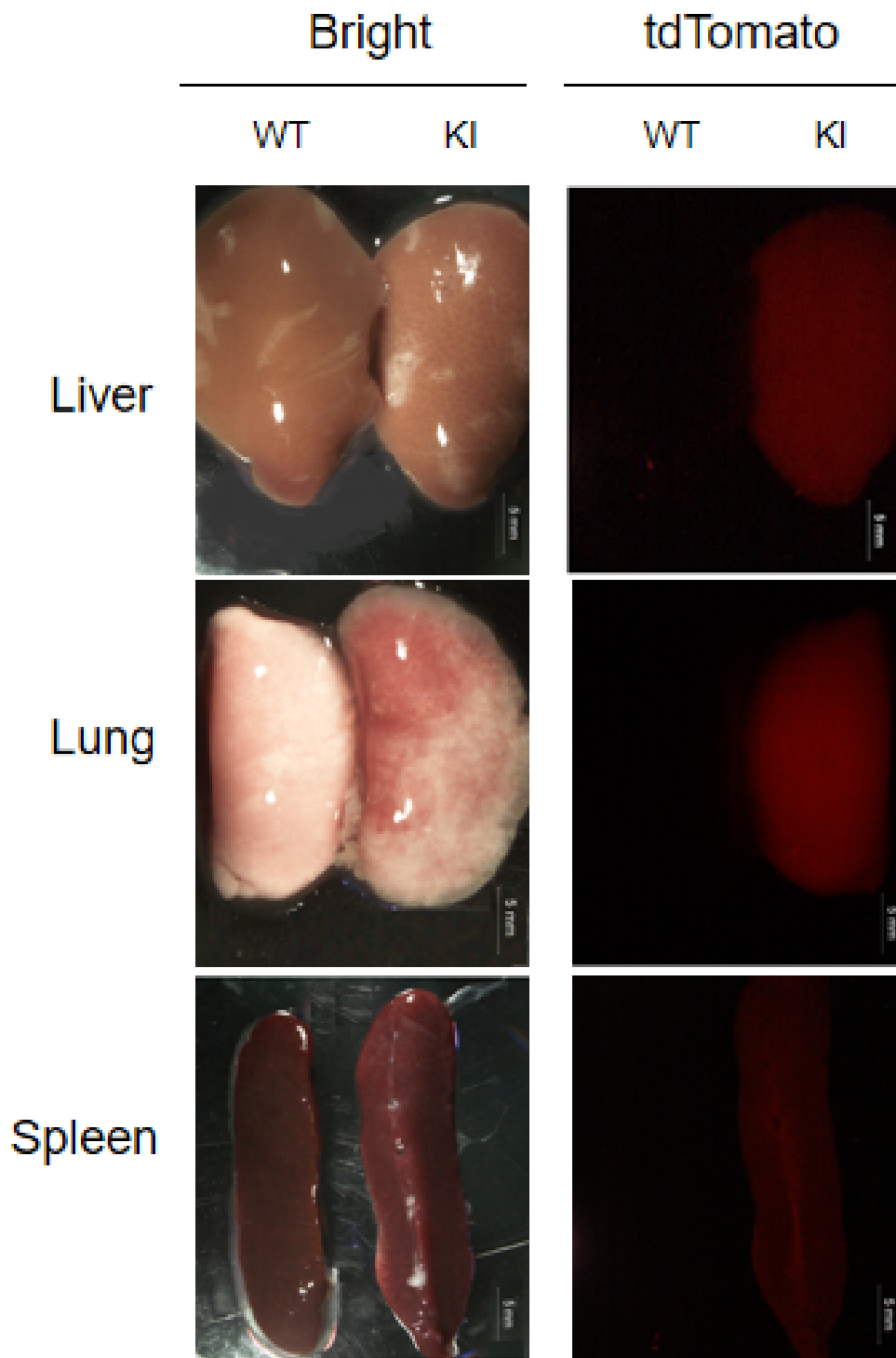
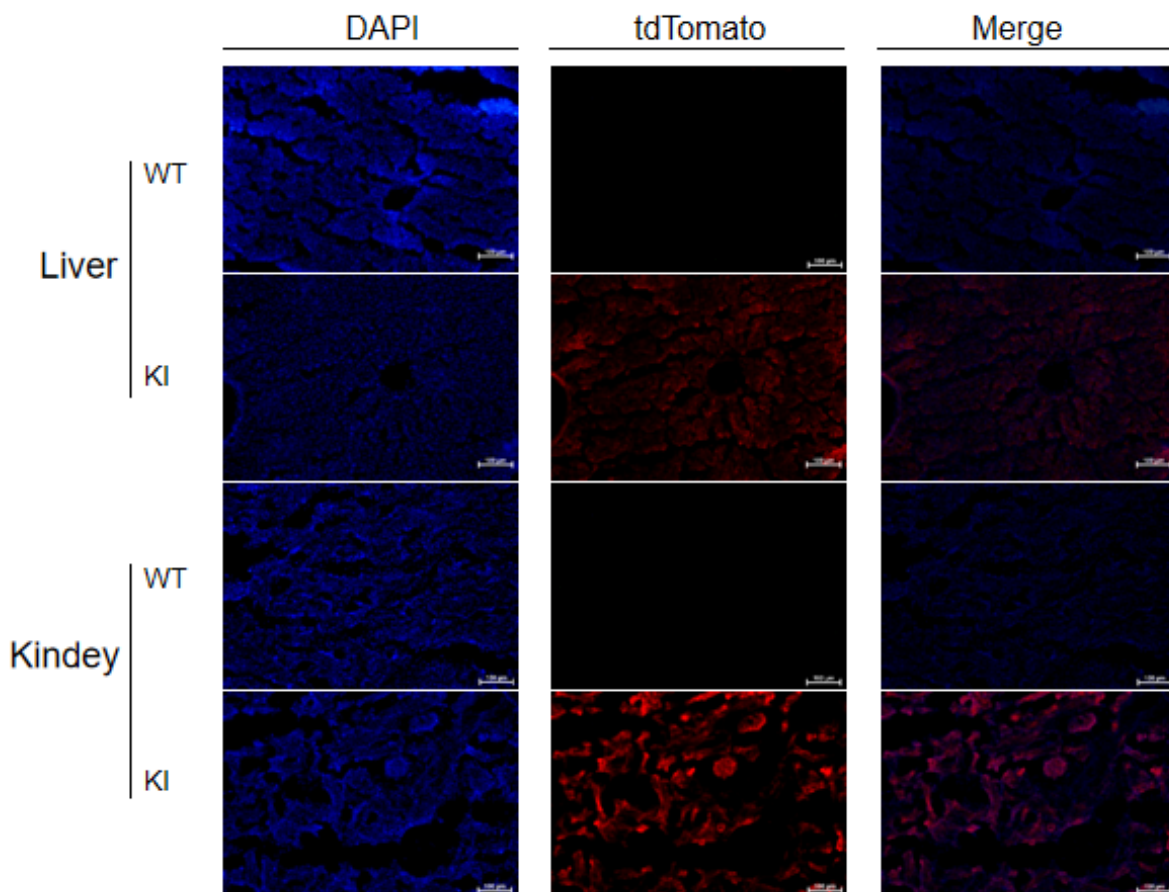
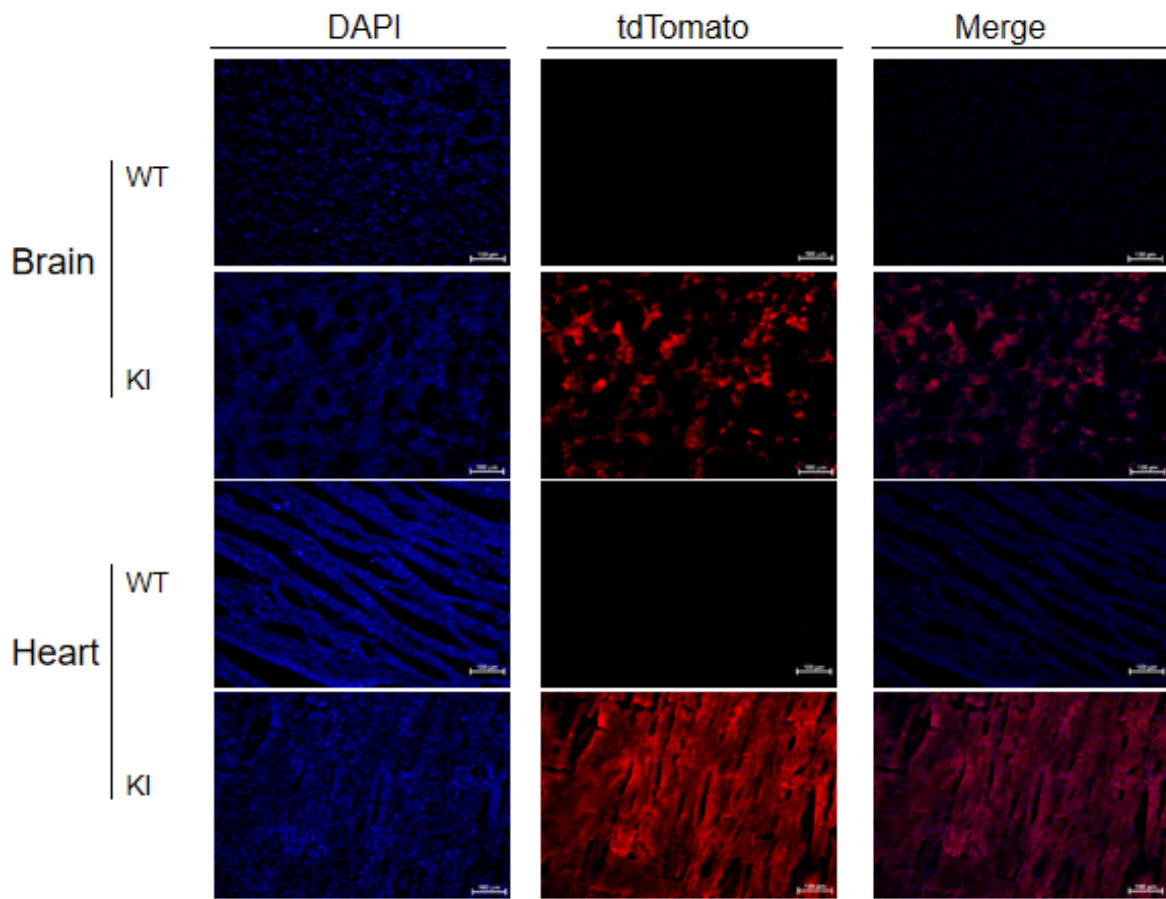


Fig1. Validation of tdTomato expression by fluorescence assay.

The main organs Heart, Liver, Spleen, Lung, Kidney, Brain & Thymus of R26-tdTomato +/- Rat were detected by fluorescence.



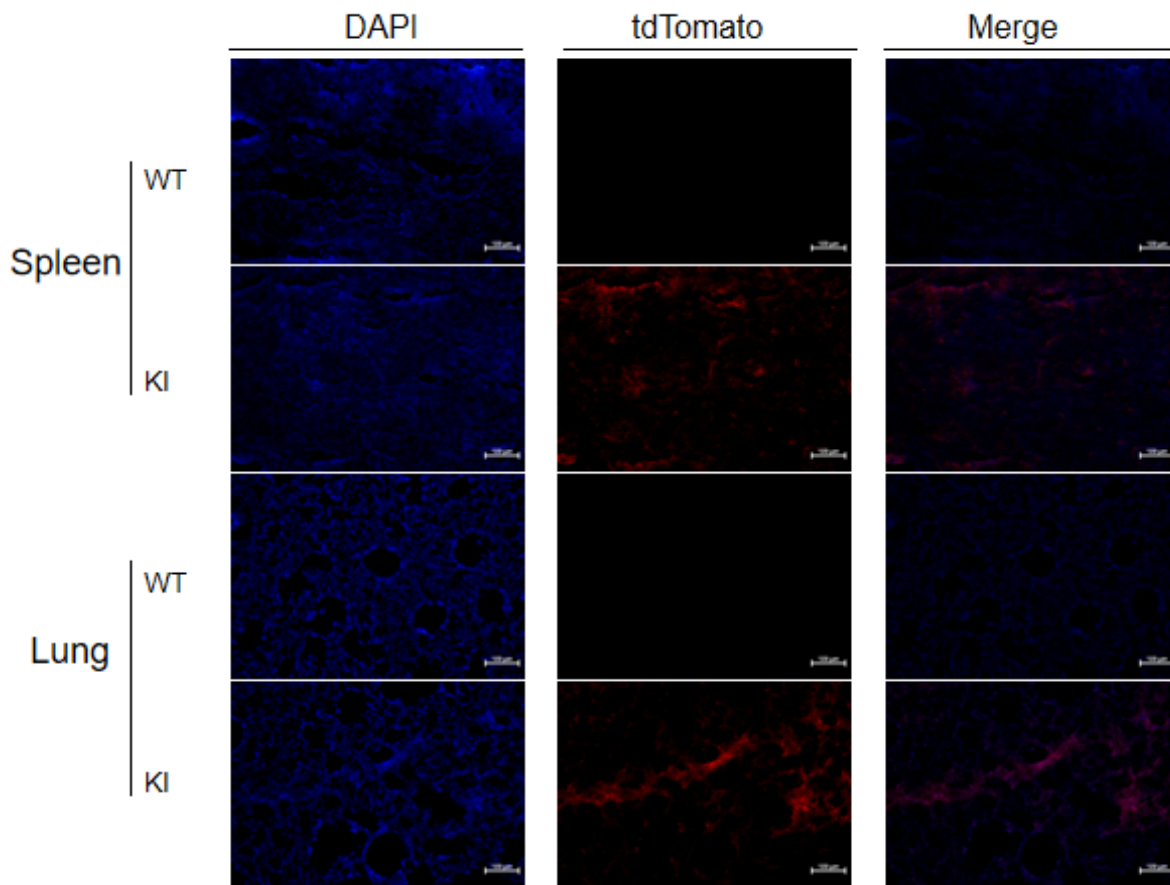


Fig2. Confocal images showing expression of tdTomato in Heart, Liver, Spleen, Lung, Kidney, Brain & Thymus of R26- tdTomato +/- Rat.