

# MC38-hCDH17

## Strain Information

SMOC番号 NM-S13-TM22

Cell Line MC38-*Ig52*<sup>em1(hCDH17)</sup>Smoc

維持形態 Validation of tumorigenic capacity completed

説明 A CDH17 expression cassette was knocked into the H11 locus.

\*Literature published using this strain should indicate: MC38-hCDH17 cell line (Cat. NO. NM-S13-TM22) was purchased from Shanghai Model Organisms Center, Inc..

## 表現型データ

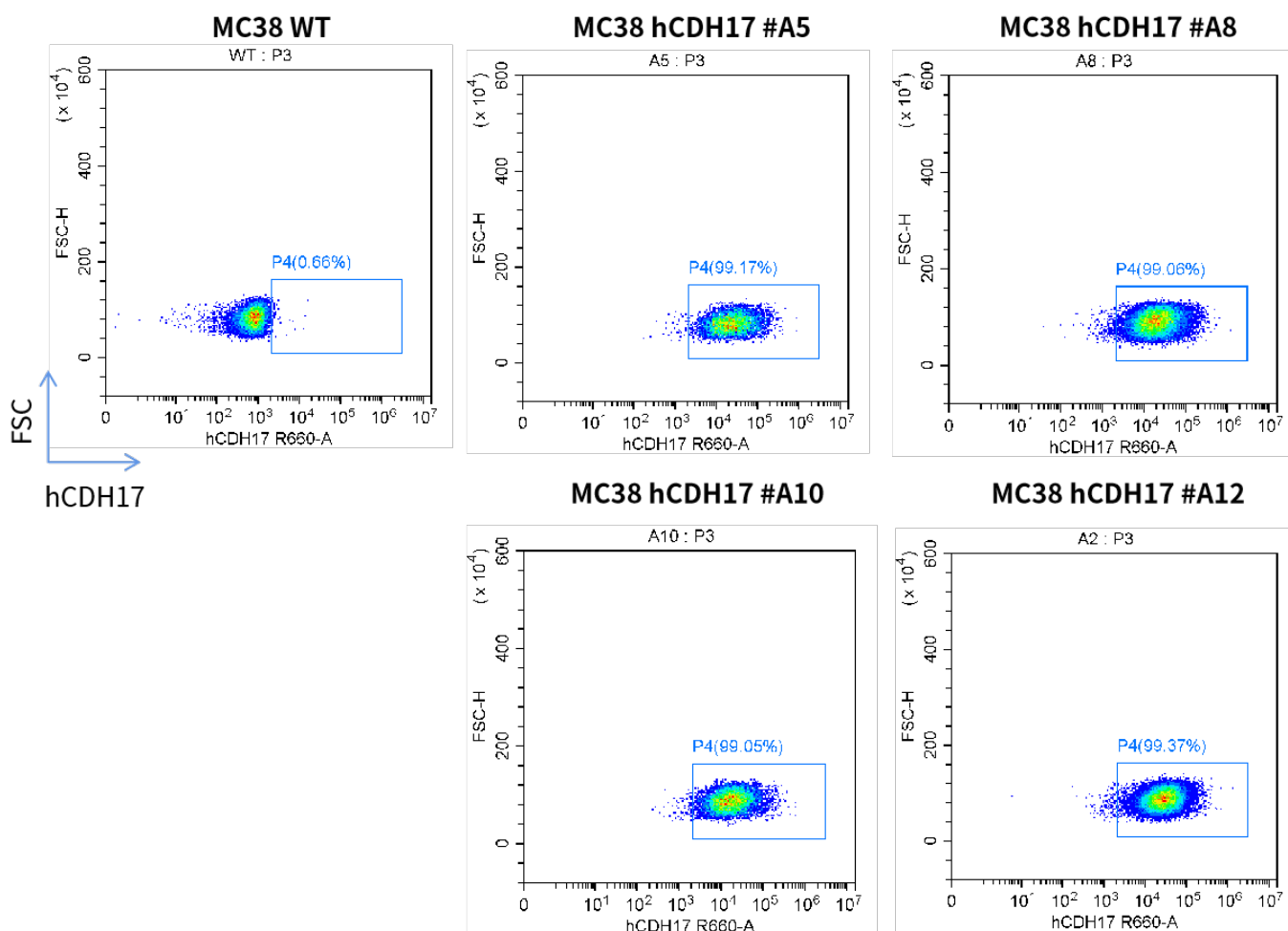


Fig1. CDH17 expression on in vitro cultured cells of MC38-hCDH17 cell line

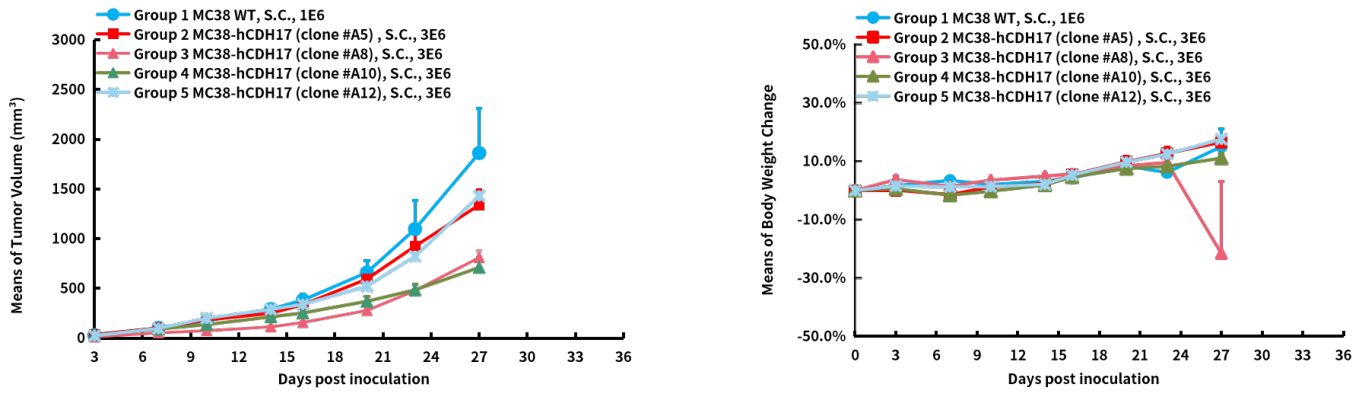


Fig2. In vivo validation of MC38-hCDH17 in C57BL/6 mice

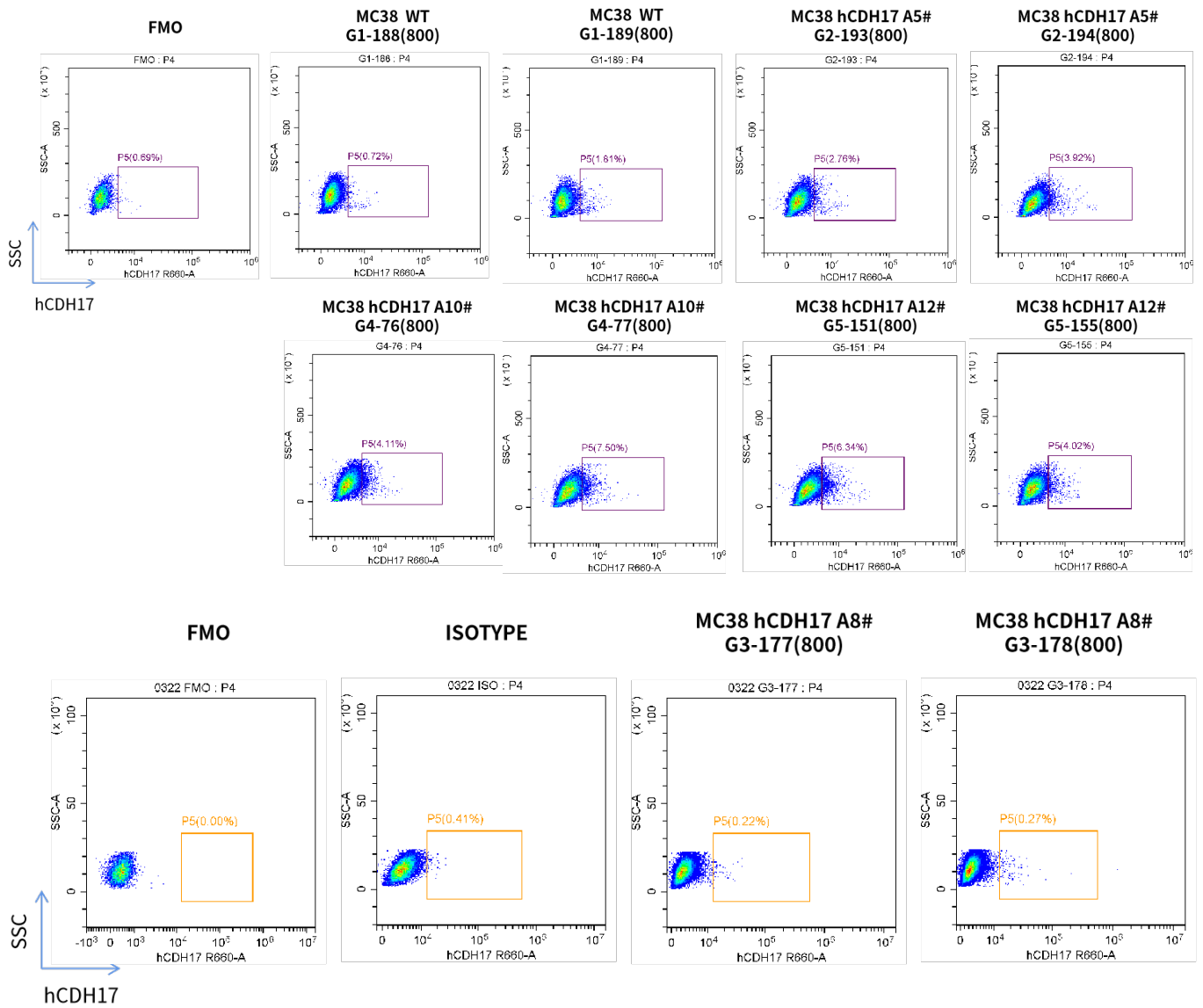


Fig3. CDH17 expression in tumors after in vivo growth of MC38-hCDH17 in wild type C57BL/6 mice