

MC38-hCEACAM5(2)

Strain Information

SMOC番号 NM-S13-TM34

Cell Line MC38-*IgS2*^{em1(hCEACAM5)Smoc}

維持形態 Validation of tumorigenic capacity completed

説明 A CEACAM5 expression cassette was knocked into the H11 locus.

*Literature published using this strain should indicate: MC38-hCEACAM5(2) cell line (Cat. NO. NM-S13-TM34) was purchased from Shanghai Model Organisms Center, Inc..

表現型データ

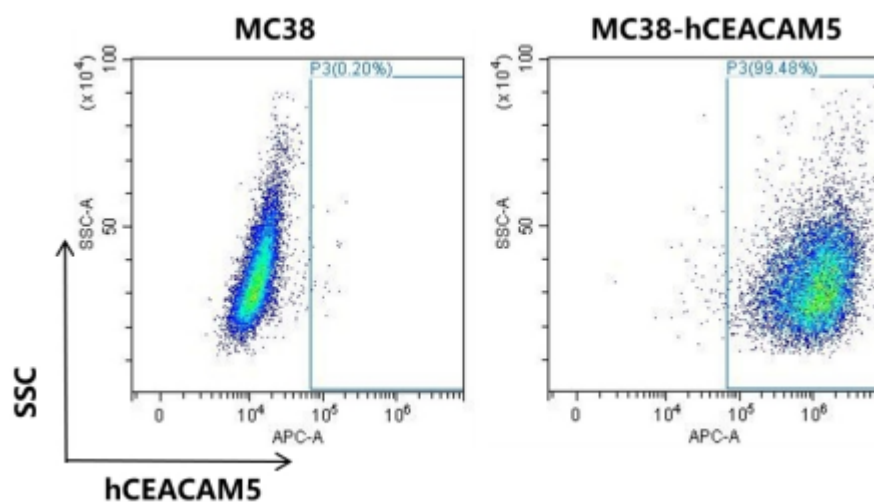


Figure 1. hCEACAM5 expression in MC38-hCEACAM5 cell line.

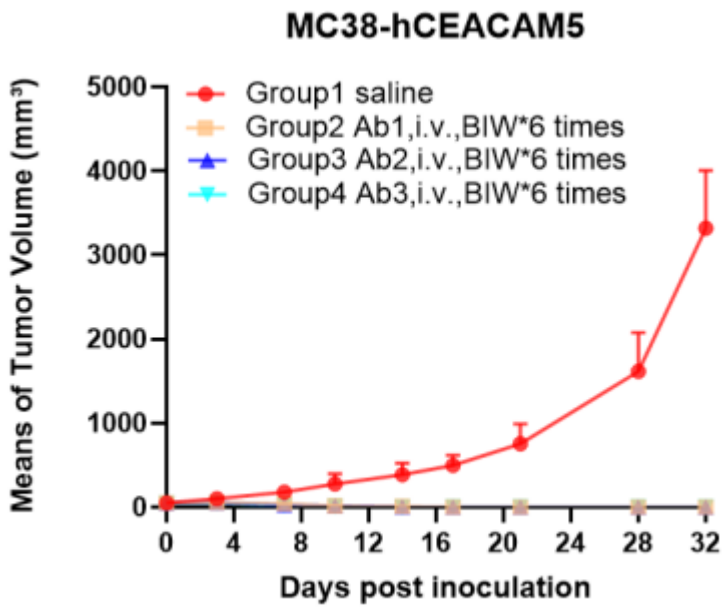


Figure 2. Tumor growth curve of MC38-hCEACAE allogeneic model (n=5).

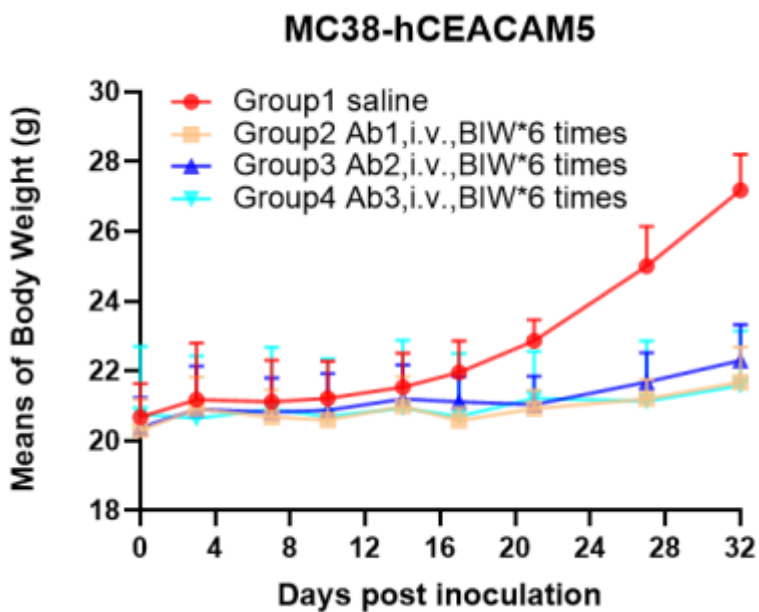


Figure 3. Body weight of MC38-hCEACAM5 allogeneic model (n=5).

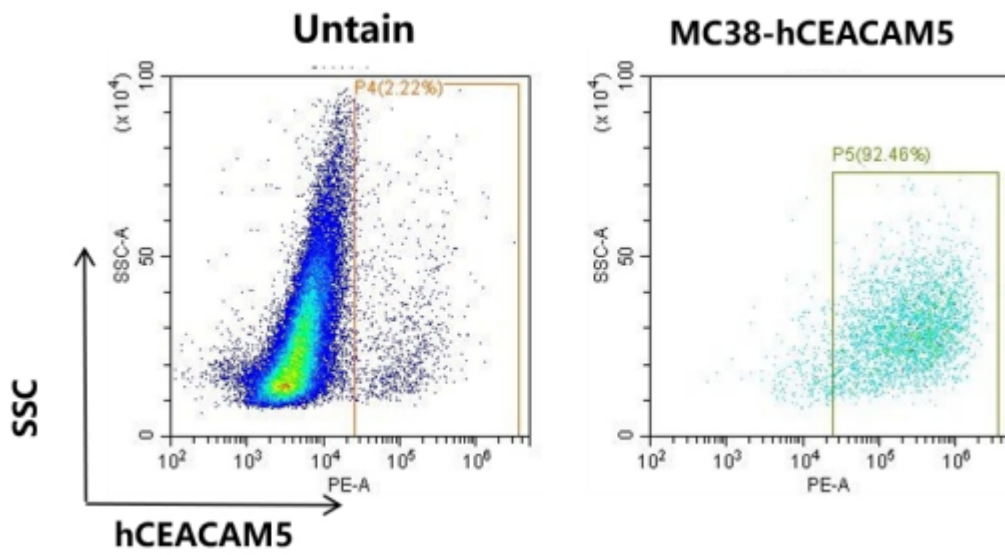


Figure 4. The expression of hCEACAM5 in humanized modified tumors by FACS.