

MC38-hMSLN

Strain Information

SMOC番号 NM-S13-TM53

Cell Line MC38-*Igs2*^{em1(hMSLN)Smoc}

維持形態 Validation of target gene expression completed

説明 A MSLN expression cassette was knocked into the H11 locus.

*Literature published using this strain should indicate: MC38-hMSLN cell line (Cat. NO. NM-S13-TM53) was purchased from Shanghai Model Organisms Center, Inc..

表現型データ

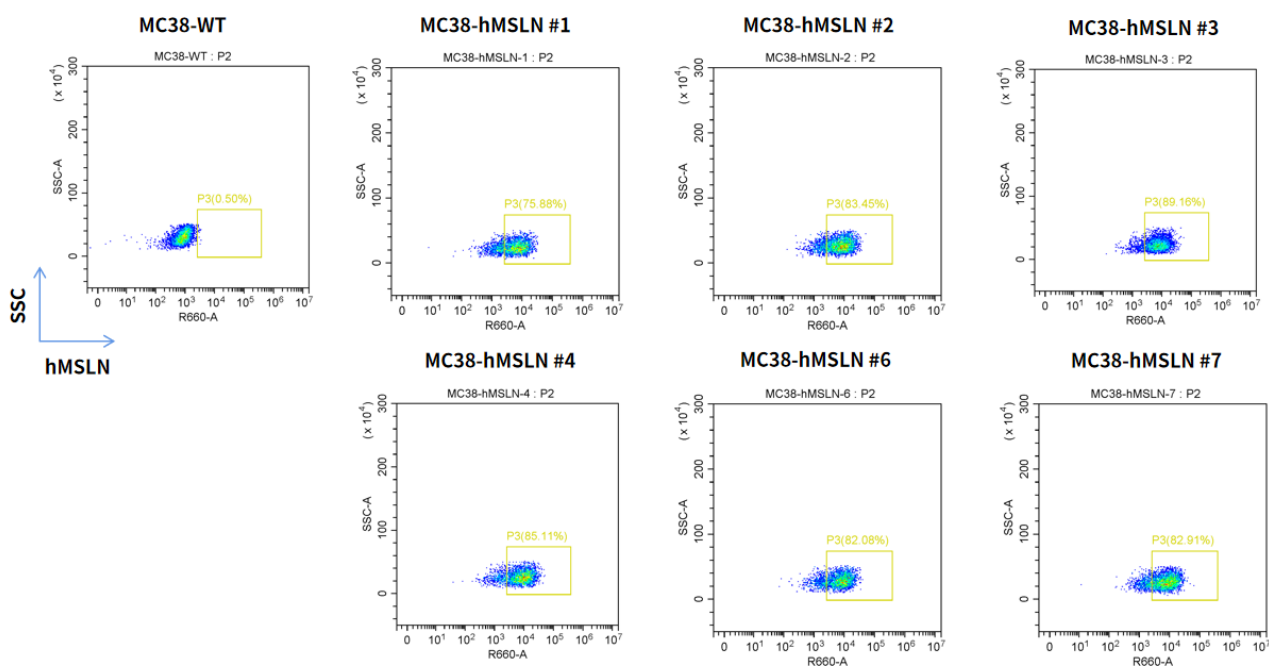


Fig1. hMSLN expression on *in vitro* cultured cells of MC38-hMSLN-Luc.

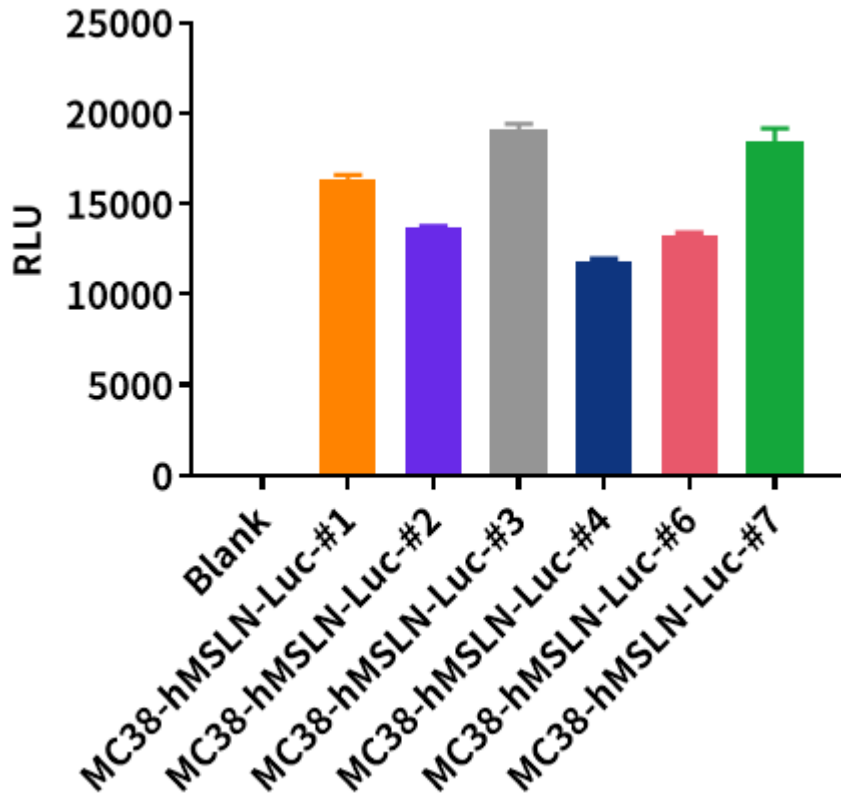


Fig2. Detection of luciferase activity in MC38-hMSLN-Luc cells *in vitro*.