

EMT-6-hPD-L1

Strain Information

SMOC番号 NM-S22A-TM01

Cell Line EMT-6-*Cd274*^{em1(hPDL1)/Smoc}

維持形態 Validation of tumorigenic capacity completed

説明 The endogenous mouse *Cd274* gene was replaced by human *CD274* gene.

*Literature published using this strain should indicate: EMT-6-hPD-L1 cell line (Cat. NO. NM-S22A-TM01) was purchased from Shanghai Model Organisms Center, Inc..

表現型データ

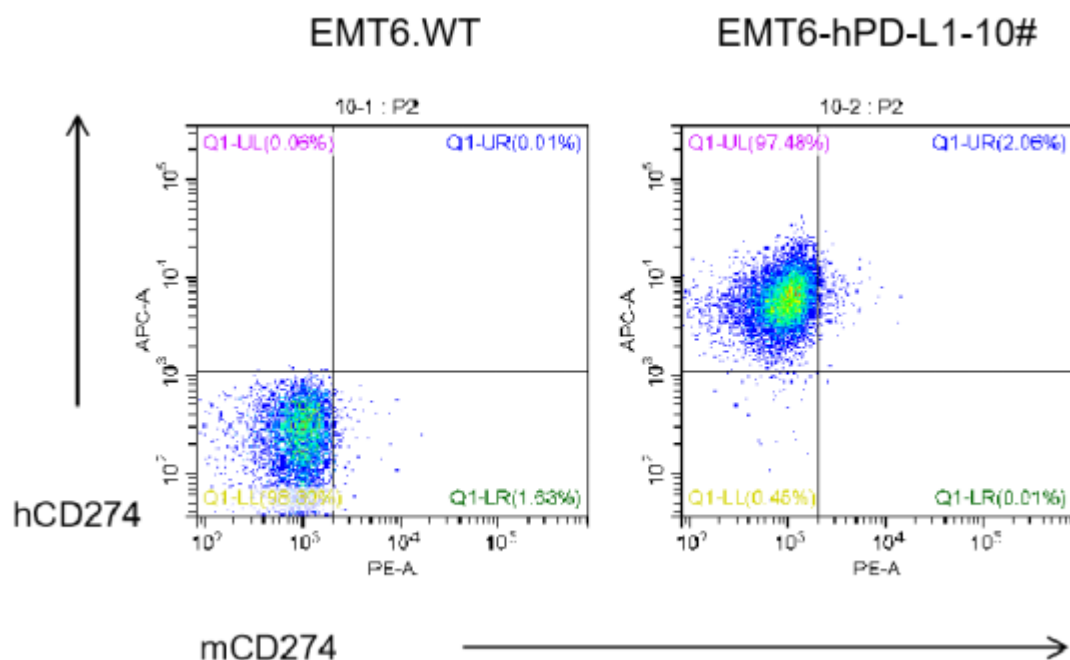


Figure 1. Expression of human PD-L1 on EMT6-hPD-L1 cells was confirmed by flow cytometry.

EMT6-hPD-L1 cells and wild type EMT6 cells were stained with species-specific anti-PD-L1 antibodies. FACS analysis shows that human PD-L1 but not mouse PD-L1 was exclusively detectable on EMT6-hPD-L1 cells.

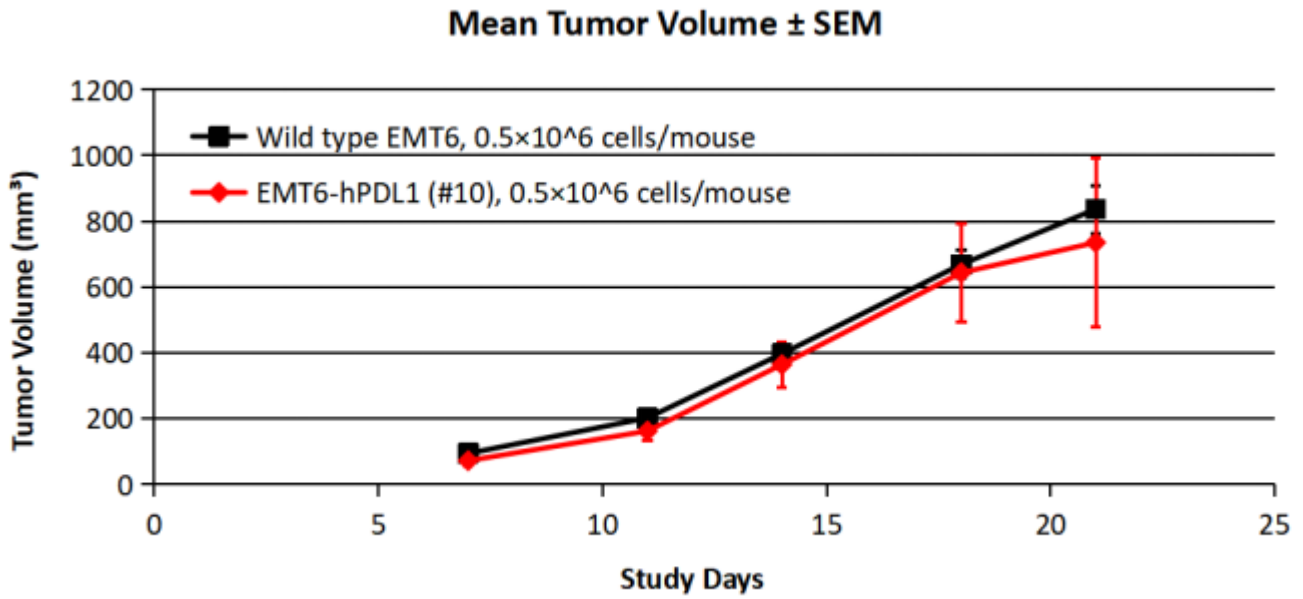


Figure 2. In vivo tumor growth curves in humanized EMT6-hPD-L1 syngeneic model.

BALB/c mice were subcutaneously injected 5×10⁵ EMT6-hPD-L1 cells compared with wild type EMT6 cells as control. Tumor growth was monitored by measuring tumor size from day 7 after subcutaneous implantation.

Data shows that there were no significant differences between EMT6-hPD-L1 cells and wild type EMT6 cells in either tumorigenicity or tumor growth.

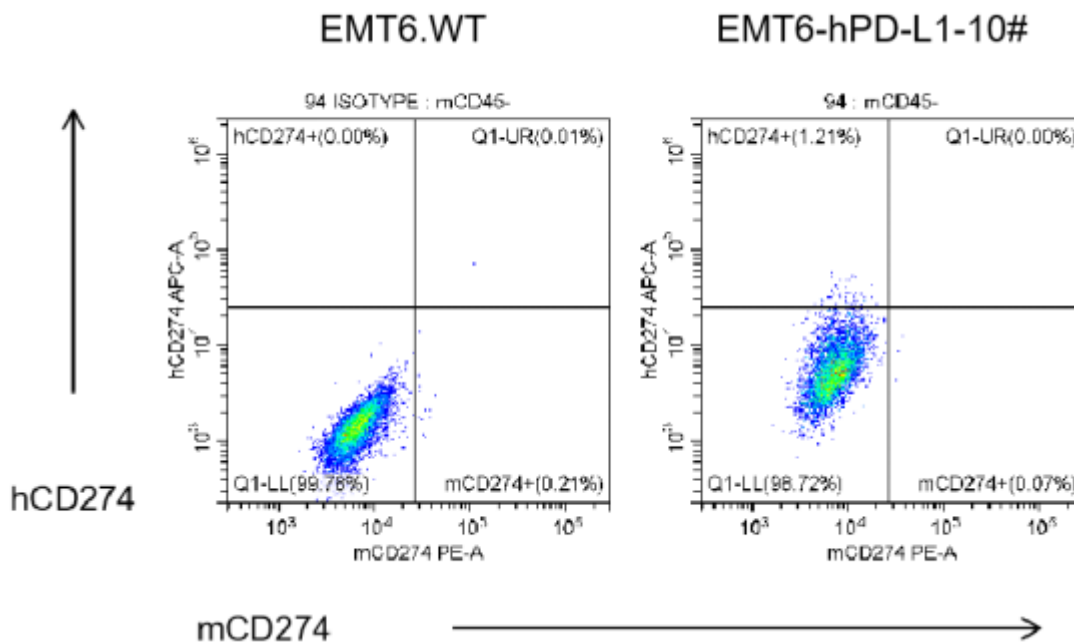


Figure 3. FACS analysis of PD-L1 expression on tumor cells derived from humanized EMT6-hPD-L1 syngeneic model with species-specific anti-PD-L1 antibodies.

Data shows that neither human PD-L1 nor mouse PD-L1 was detectable in EMT6-hPD-L1 knock-in

tumor. This EMT6-hPD-L1 cell line can only be used for in vitro validation not for in vivo experiments.
