

# MC38-hTGFβ

## Strain Information

SMOC番号	NM-S13-TM63
Cell Line	MC38- <i>Igs2</i> <sup>em1(hTGFβ)/Smoc</sup>
維持形態	Validation of tumorigenic capacity completed
説明	A TGFβ expression cassette was knocked into the H11 locus.  *Literature published using this strain should indicate: MC38-hTGFβ cell line (Cat. NO. NM-S13-TM63) was purchased from Shanghai Model Organisms Center, Inc..

## 表現型データ

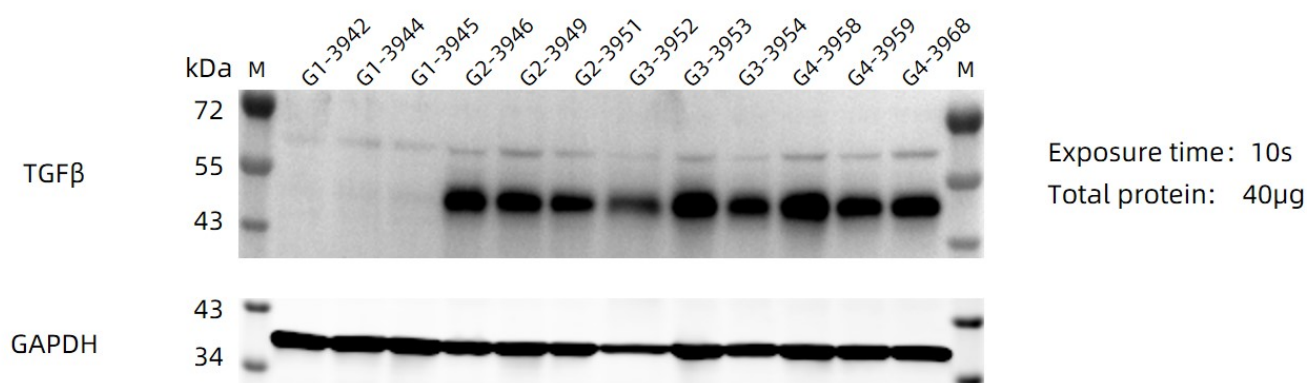


Figure 1. Western blot analysis of human TGFβ protein.

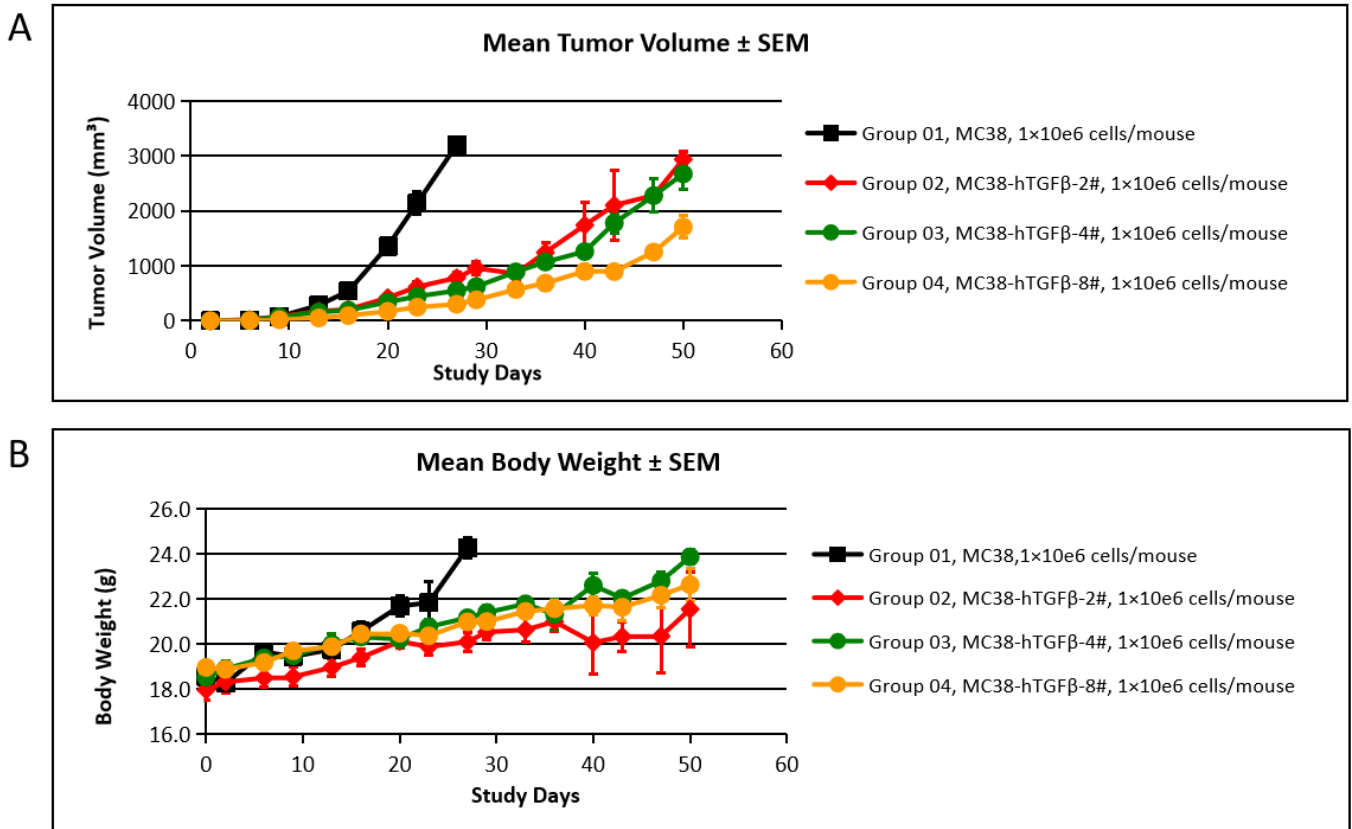


Figure 2. Tumor growth curve(A) and body weight change(B).

MC38-hTGF $\beta$  cells and wild-type MC38 cells were implanted into C57BL/6 mice. As shown in panel A, MC38-hTGF $\beta$  cells were able to establish tumors in vivo and can be used for efficacy studies.