

MC38-Luc

Strain Information

SMOC番号	NM-S13-TM67
Cell Line	MC38-Tg(Luciferase)Smoc
維持形態	Validation of tumorigenic capacity completed
説明	Luciferase-labeled mouse MC38 cell. *Literature published using this strain should indicate: MC38-Luc cell line (Cat. NO. NM-S13-TM67) was purchased from Shanghai Model Organisms Center, Inc..

表現型データ

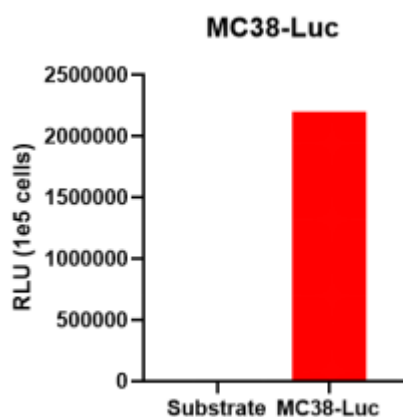


Figure 1. Luciferase activity assay of MC38-Luc cell line

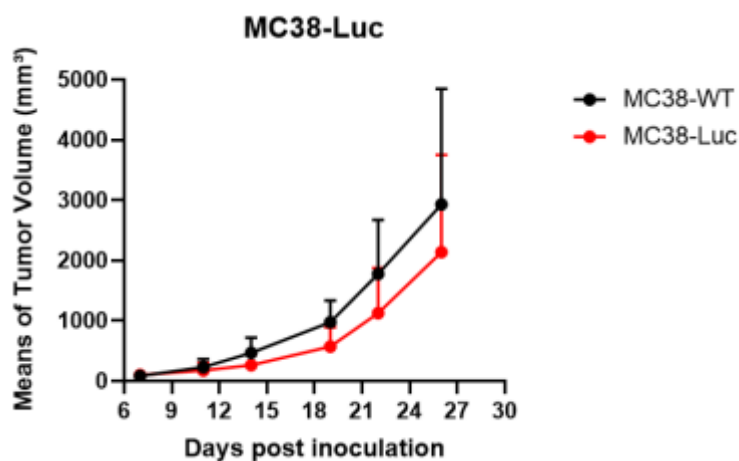


Figure 2. Tumor growth curve of MC38-Luc allogeneic model (n=5)

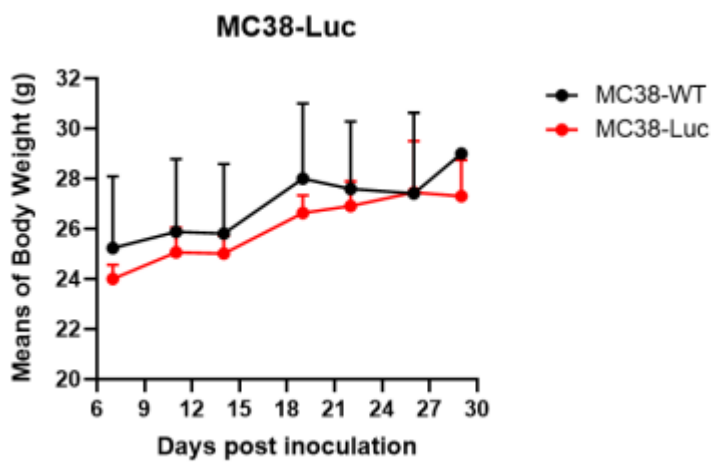


Figure 3. Body weight change of MC38-Luc allogeneic model (n=5)