

LLC1/LL2-hPD-L1

Strain Information

SMOC番号 NM-S30A-TM01

Cell Line LLC1/LL2-*Cd274*^{em1(hCD274)Smoc}

維持形態 Validation of tumorigenic capacity completed

説明 The endogenous mouse Cd274(also known as PD-L1) gene was replaced by human PDL1 gene.

*Literature published using this strain should indicate: LLC1/LL2-hPD-L1 cell line (Cat. NO. NM-S30A-TM01) was purchased from Shanghai Model Organisms Center, Inc..

表現型データ

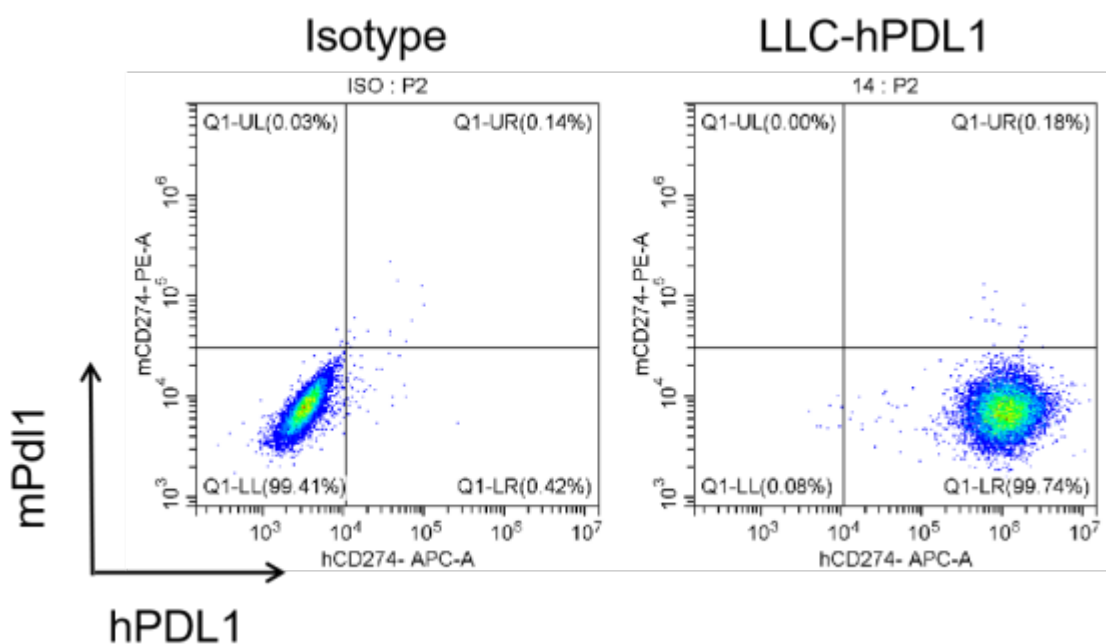


Figure 1. hPD-L1 expression in LLC1-hPD-L1 cell lines.

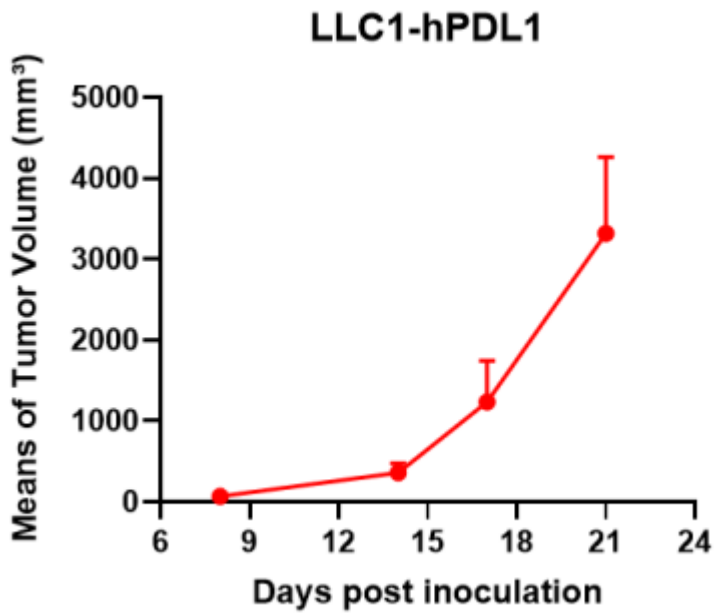


Figure 2. Tumor growth curve of LLC1-hPDL1 syngeneic model (n=3).

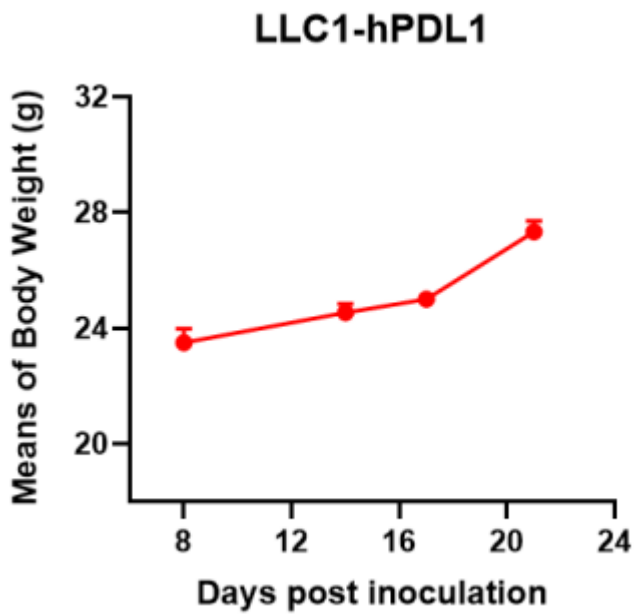


Figure 3. Body weight change of LLC1-hPDL1 syngeneic model (n=3).