

# MC38-hSEMA4D

## Strain Information

SMOC番号 NM-S13-TM68

Cell Line MC38-*Sema4d*<sup>em1(hSEMA4D)Smoc</sup>

維持形態 Validation of target gene expression completed

説明 The endogenous mouse *Sema4d* gene was replaced by human SEMA4D gene.

\*Literature published using this strain should indicate: MC38-hSEMA4D cell line (Cat. NO. NM-S13-TM68) was purchased from Shanghai Model Organisms Center, Inc..

## 表現型データ

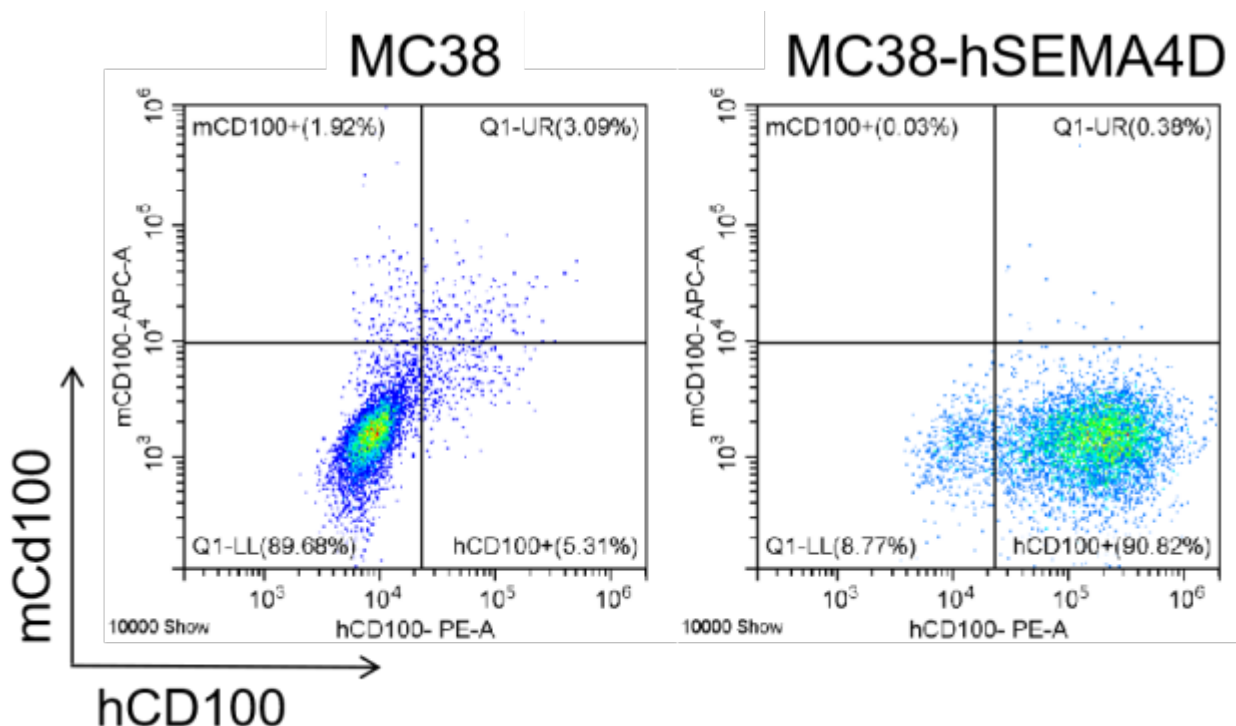


Figure 1. hSEMA4D expression in wild-type MC38 and MC38-hSEMA4D cell lines

