

EMT6-Luc

Strain Information

SMOC番号	NM-S22A-1
Cell Line	EMT6-Tg(Luciferase)Smoc
維持形態	Validation of tumorigenic capacity completed
説明	Luciferase-labeled human EMT6 cell. *Literature published using this strain should indicate: EMT6-Luc cell line (Cat. NO. NM-S22A-1) was purchased from Shanghai Model Organisms Center, Inc..

表現型データ

The EMT6-Luc cell line is an EMT6 murine mammary carcinoma cell line derived from a BALB/c mouse with stable and high expression of Luciferase. Luciferase activity was showed a steady increase in tumor bearing mouse models. The tumorigenesis test showed this cell line could form tumors normally after inoculation in fat pad but no significant lung metastases. Moreover, this cell line metastasize to the liver when they are injected into the spleen. This EMT6-Luc cell line is available for in vivo imaging and assessment of novel therapeutic modalities.

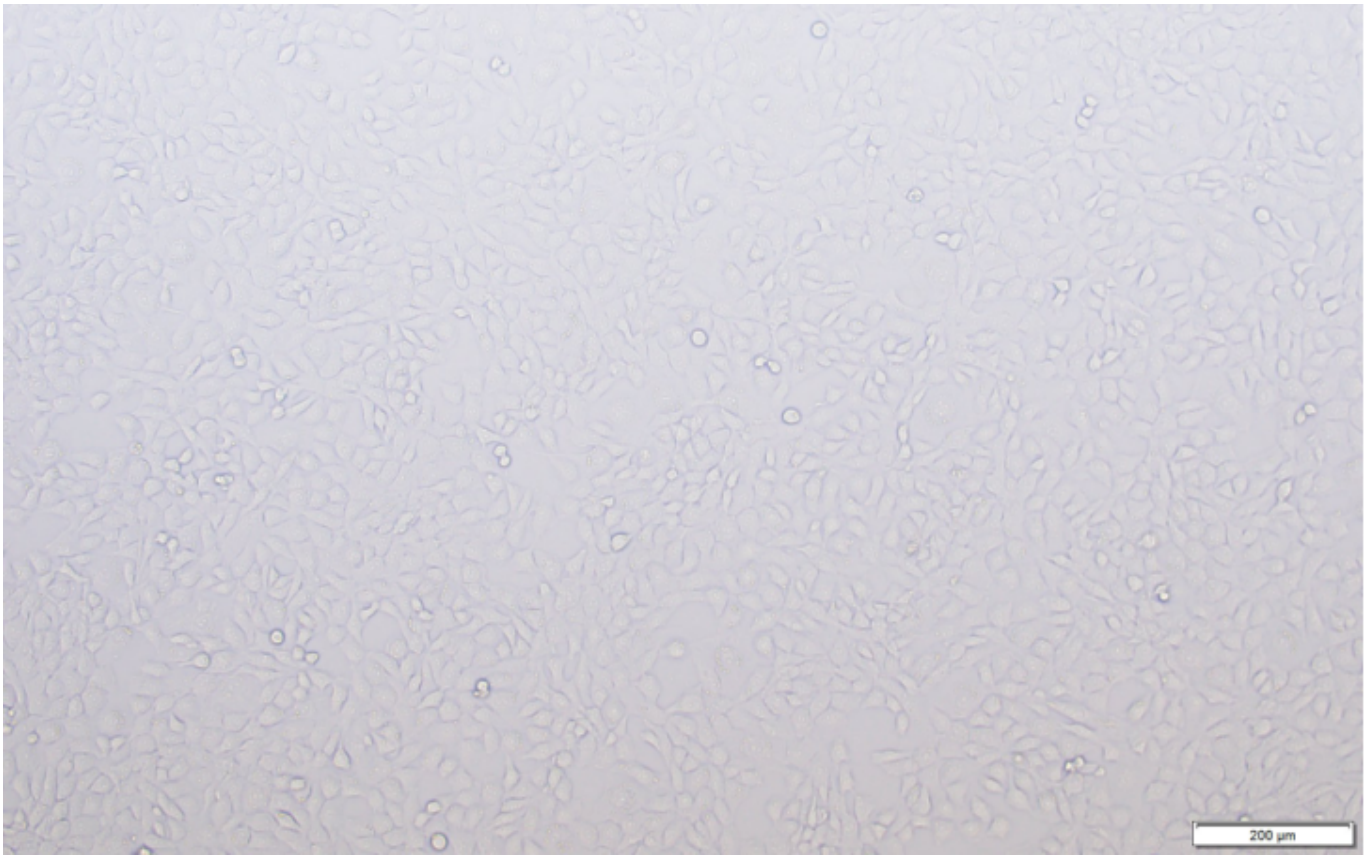


Figure 1. Morphology of EMT6-Luc cell line.

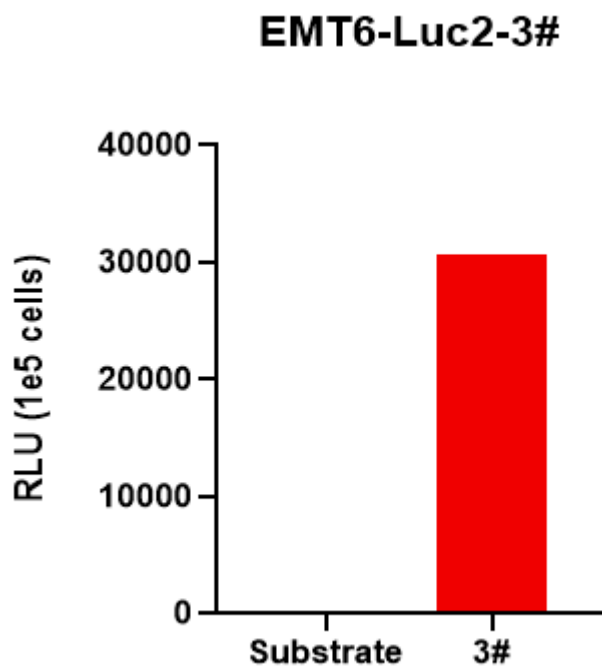


Figure 2. Luciferase activity assay of EMT6-Luc cell line.

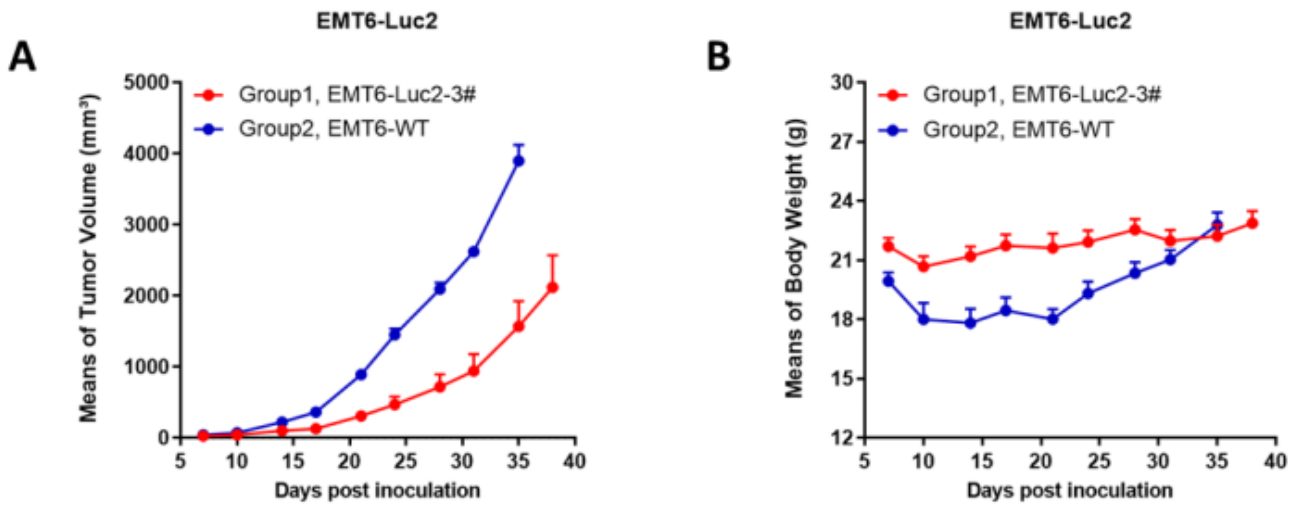


Figure 3. (A) Average growth curves of EMT6-Luc tumors. (B) Body weights of EMT6-Luc tumor bearing mice. (n=5) EMT6-Luc cells were inoculated in the fat pads of BALB/C mice.

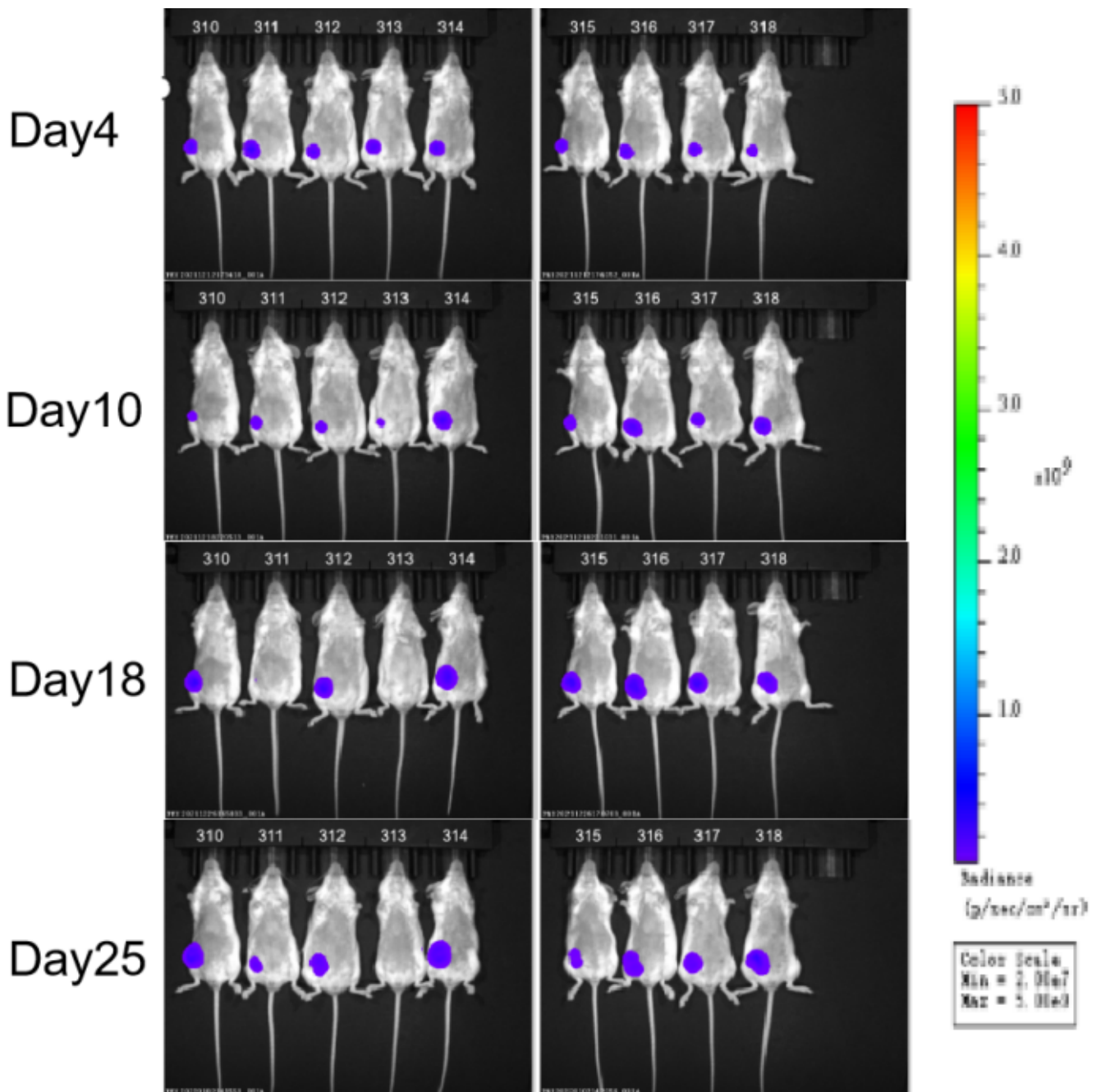


Figure 4. *In vivo* bioluminescence imaging of EMT6-Luc tumor bearing mice. (n=9)

EMT6-Luc cells were inoculated in fat pads of BALB/C mice.

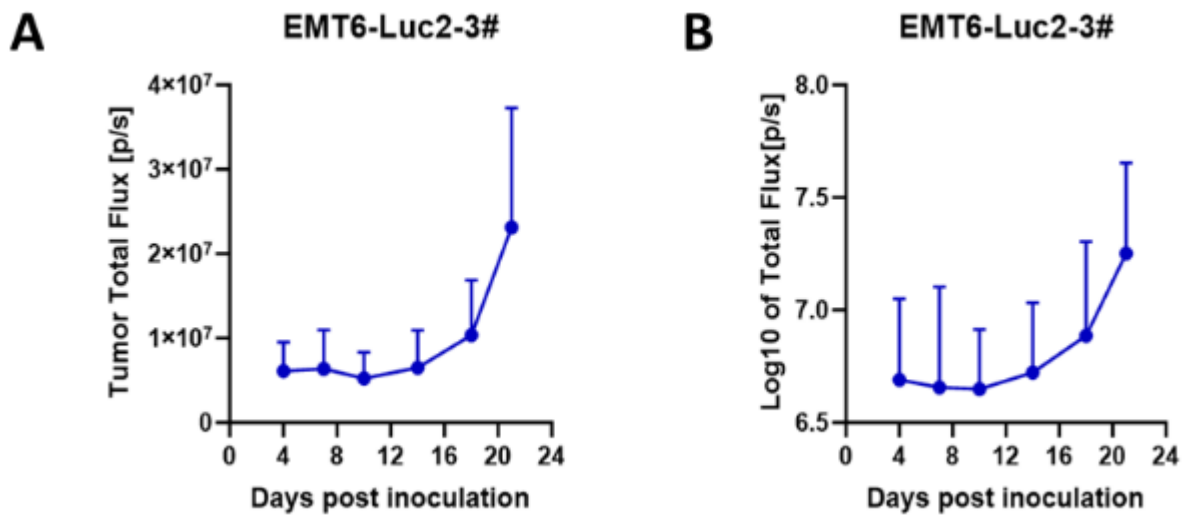


Figure 5. *In vivo* luciferase activity curves of EMT6-Luc lung metastasis. (n=9)

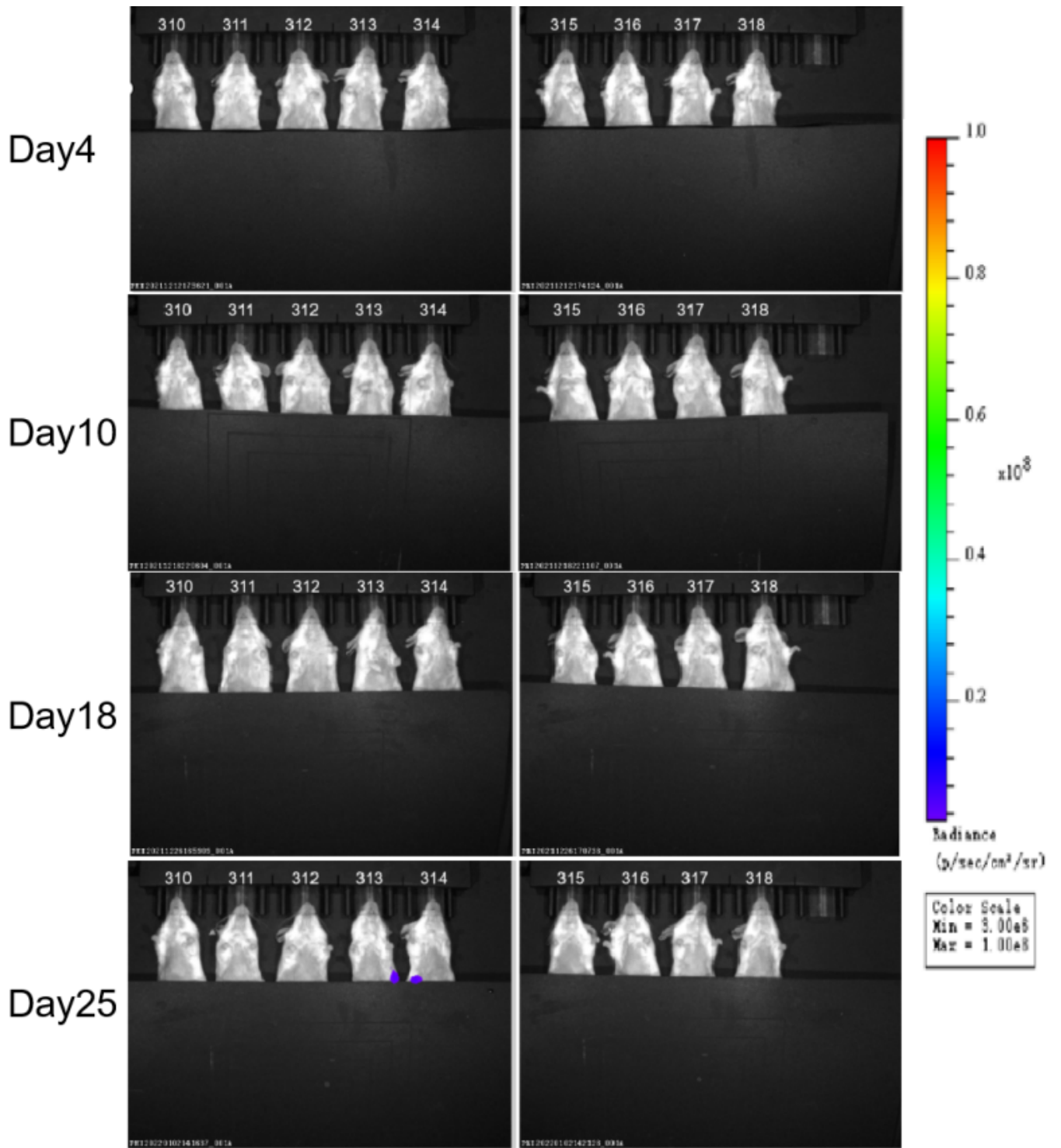


Figure 6. *In vivo* bioluminescence imaging of EMT6-Luc lung metastases. (n=9)

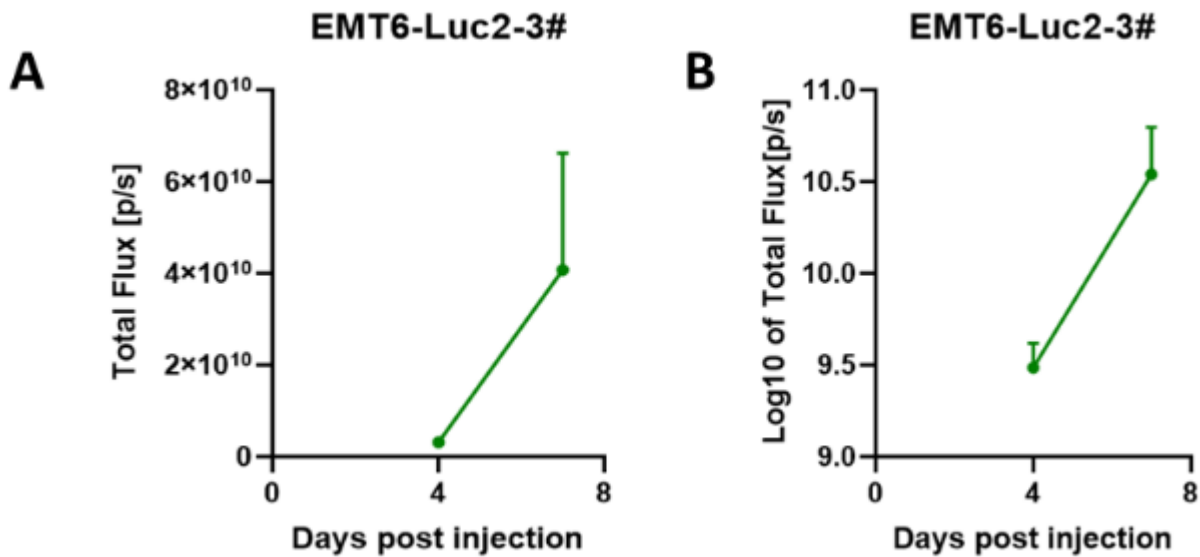


Figure 7. *In vivo* luciferase activity curves of EMT6-Luc liver metastasis models. (n=9)

EMT6-Luc cells were intrasplenically injected into BALB/C mice to elicit formation of hepatic metastases.

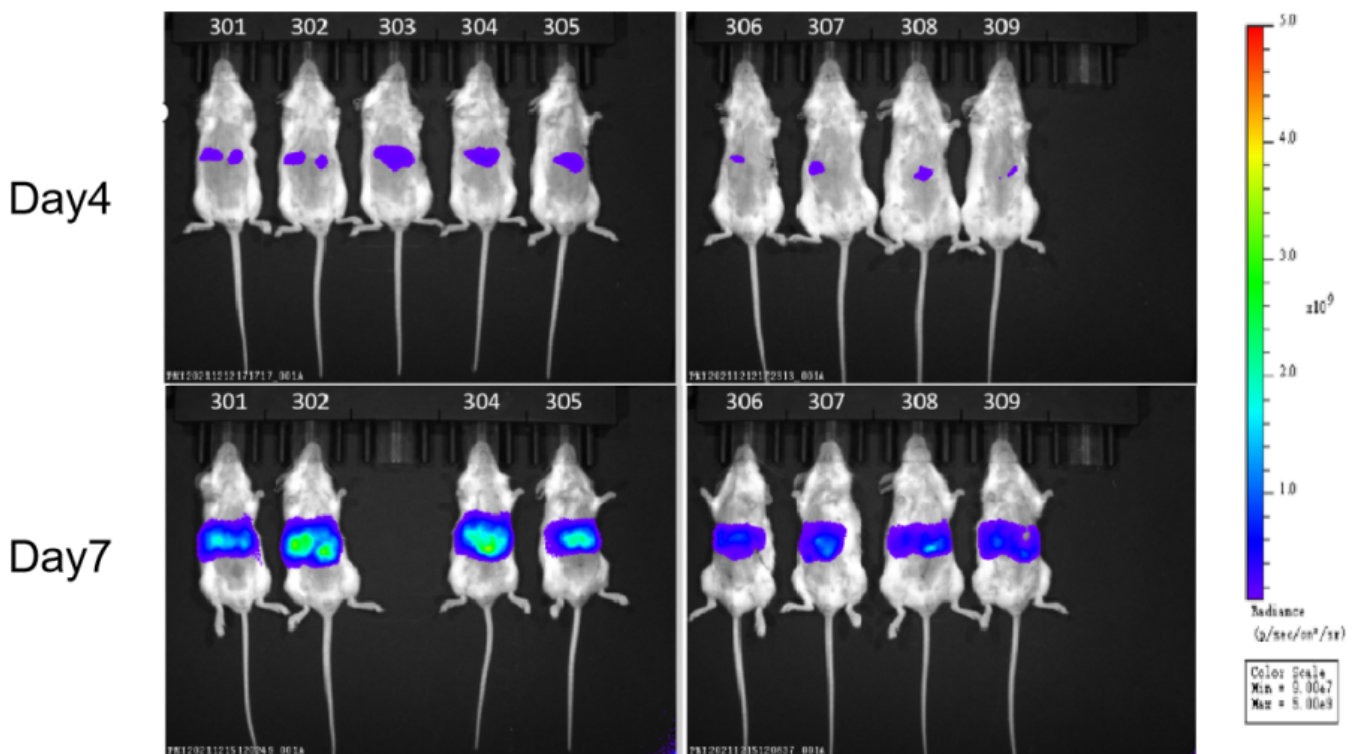


Figure 8. *In vivo* bioluminescence imaging of EMT6-Luc hepatic metastases. (n=9)