

Siglec1-DTR-2A-tdTomato

系統名	C57BL/6Smoc- <i>Siglec1</i> ^{em1(DTR-2A-tdTomato-polyA)Smoc}
SMOC番号	NM-KI-215031
維持形態	Repository Live

遺伝子の概要

Gene Symbol Tlr5	Synonyms	-
	NCBI ID	53791
	MGI ID	1858171
	Ensembl ID	ENSMUSG00000079164
	Human Ortholog	TLR5

説明

DTR-2A-tdTomato-polyA expression cassette was knocked into the Siglec1 gene.

*Literature published using this strain should indicate: Siglec1-DTR-2A-tdTomato mice (Cat. NO. NM-KI-215031) were purchased from Shanghai Model Organisms Center, Inc..

表現型データ

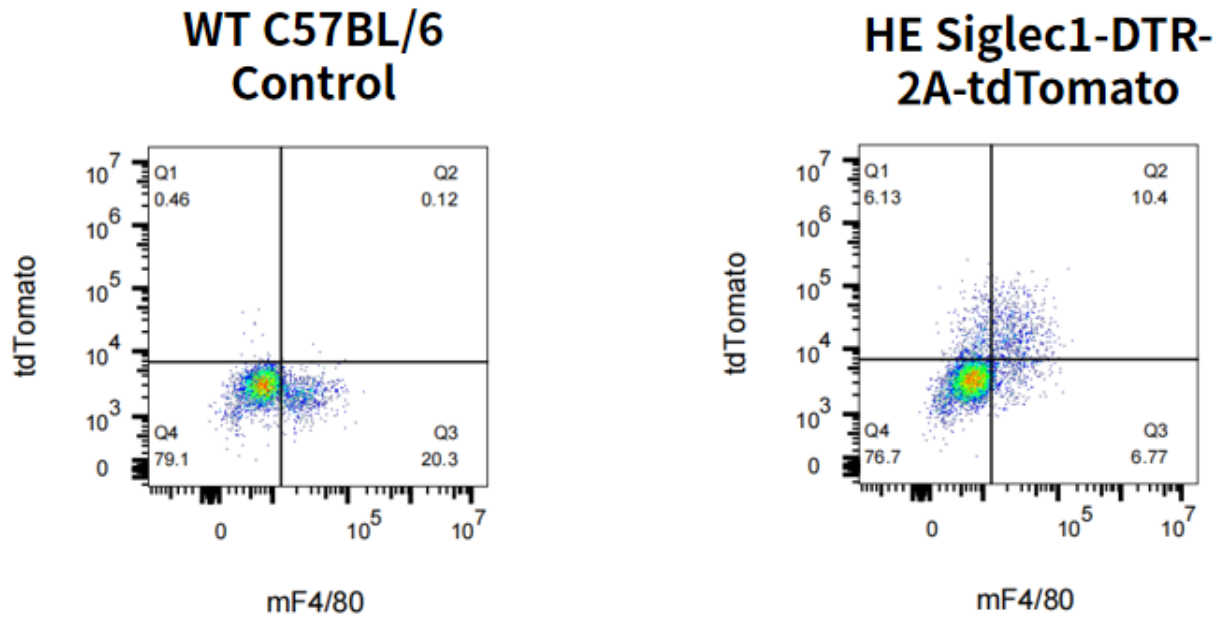


Fig1. Detection of tdTomato expression on F4/80+ macrophages in blood in Siglec1-DTR-2A-tdTomato mice.

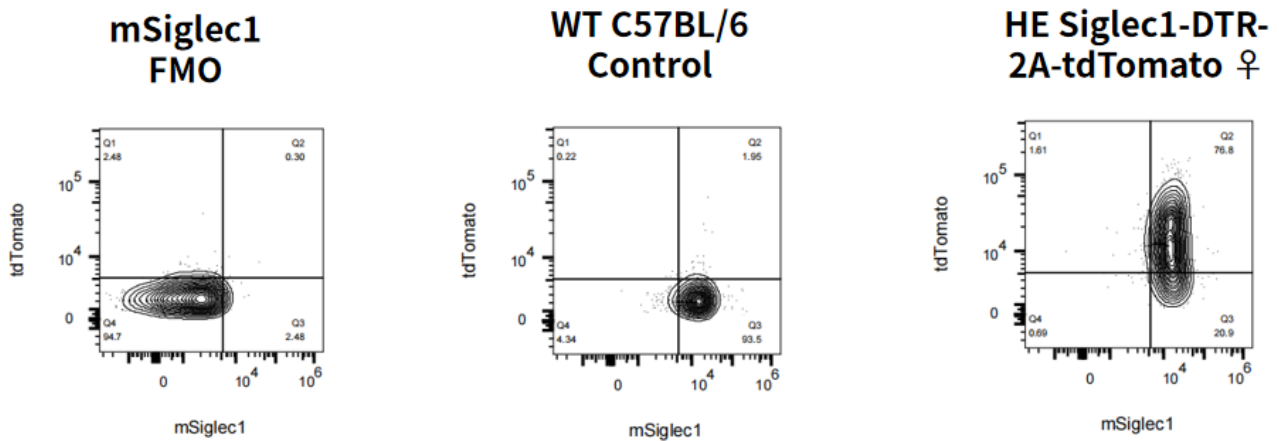


Fig2. Detection of tdTomato and Siglec1 expression on F4/80+ macrophages in Siglec1-DTR-2A-tdTomato mice.